

inside
www.pittsburghillustrators.org



This issue:

Member News	p.1
Features	p.6
Spotlight	p.13
Behind the Brush	p.14

Editor: Anni Matsick

Reporters this issue:
Fred Carlson
June Edwards
Molly Thompson
Lindsay Wright

Design & Production:
Yelena Lamm



Green Space

"The Perfect Spot" by **Christie Biber** received an Award of Merit in *Images 2019*, the juried show of the *Central Pennsylvania Festival of the Arts*. The 36"x50" painting was done in oil on canvas. Juror was Shannon Egan. The exhibition was on display in Schlow Centre Region Library in downtown State College during July. A reception took place Thursday, July 11 during the Festival's 4-day run.



Mad About Art

"We're All Mad Here" by **Rhonda Libbey** was displayed in **The Enchanted Brush**, the University of Findlay Mazza Museum's annual summer exhibition featuring works by gifted artists from around the world. The exhibit took place June 10 through August 2 in the Virginia B. Gardner Fine Arts Pavilion's Lea Gallery.

For this fifth annual event, titled *Inspired*, the participants were asked to create original work that pays tribute to an existing work of art, an artist, or a work of literature. The 32 artists have created work for Disney, Pixar, DreamWorks, HBO's "Game of Thrones," National Geographic, Marvel, and other iconic brands. Mazza Museum curator Dan Chudzinski, who conceived of and organizes *The Enchanted Brush* exhibition, said what began as a late-night conversation among artist friends "has grown from a modest gallery display to an extraordinary collection of some of the world's most exceptional fantasy artists." An artist reception was held July 17 with Rhonda and several other featured artists attending.



Bird Blitz

Mark Brewer is introducing his "Brewer's Birdz" on social media while slowly adding them on coffee mugs, t-shirts, stickers, and "wherever else they might soar!" See more of them on [page 16](#).



My Spot

Anni Matsick

This newsy issue is packed with photos and reports on the many events held by our organization over the summer months. The last-Thursday-of-the-month Business of Illustration

meetings continue to inform, and the first-Tuesday Socials provide a looser atmosphere for open exchange. New and established members closed out the season at the annual August picnic, enjoying a hearty spread while learning about the organization's many offerings.

Many of our illustrators are showing their framed art in

galleries, filling a page with listings of exhibits and awards, and one artist has covered an entire outdoor wall with his colorful imagery.

Under Kudos, you'll find a variety of accomplishments. And coming up next year is one distinguished member's contribution to the next volume of PEGs, invited due to his long successful career, described on [page 4](#).

The Spotlight is on several Sharpie-wielding members who filled their summer calendars entertaining appreciative crowds. A selection of the happy faces appears on [page 13](#).

In addition to all of this, the main buzz is on PSI's new show opening this week at the Stifel Fine Arts Center! Everything you need to know before hitting the road to Wheeling appears on [page 12](#). Read up on everyone in these pages then join the crowd at the reception!

On Exhibit

Nora Thompson is part of a 3-person show with artists Brian McCall and Johnny Dismal at You Are Here Gallery in Jeannette at 406 Clay Avenue. Titled "Bat Country," the exhibit opened with a reception on August 17 and runs through September 28. Nora's works are painted on old cabinet doors, wear and tear intact, most of which she found at Construction Junction. ("No need for framing!"). The works shown are acrylic on cabinet doors, including hardware.



"Carmen" (15.5"x27")

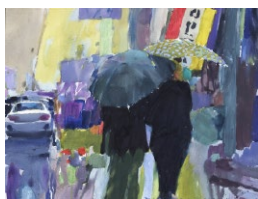


"Shock" (15"x19.75")



"Swatter" (15.75"x27.75")

Ron Thurston, Bill Vrscak and **Anni Matsick** are among the 100 artists whose works are included in the 2019 Pennsylvania Watercolor Society's 40th International Juried Exhibition. Juror of Selection was John T. Salminen. The Opening Reception will take place Sunday, September 8, 1-4 pm, at the Lancaster Museum of Art. Show dates are August 31 - October 26.



"Arm In Arm" (19"x25")
by Ron Thurston



"Truck Farmer" (18"x24") on
Arches oil paper by Bill Vrscak



"Dreamscape With Rabbit"
(12"x15") by Anni Matsick



"Dreamscape With Wading Pool"
(11"x15") by Anni Matsick

The 3 artists were also accepted into Pittsburgh Watercolor Society's *Aqueous Open 2019 International Exhibition*. Juror Frank Ebert chose works by 52 artists from

the 117 applicants. Submissions came from 29 states and 3 foreign countries. An Opening Reception, free to the public, is scheduled for Saturday, October 5, 5-8pm at Spinning Plate Gallery, at 5720 Friendship Ave in Pittsburgh. The show runs October 2 through November 2.



"Archie And Sidney" (19"x25")
by Ron Thurston



"The Bus Stops Here" (12"x21")
on Arches oil paper by Bill Vrscak

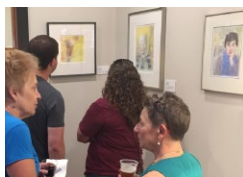


"Garden Patrol" (19"x25") by **Ron Thurston** was awarded the Forest Runes Award in the 2019 Adirondacks National Exhibition of American Watercolors in

Old Forge, NY. The show includes **Bill Vrscak's** "Morning in the Borough" (18"x24"). Juror of Selection was Richard Sneary and Juror of Awards was Kathleen Giles. The exhibit opened August 2 and runs through September 29.



A selection of paintings by **Anni Matsick** was on display at Kish Bank on S. Allen Street in State College for the month of June. Gathered for this exhibit were 18 recent works in watercolor highlighting the artist's career as an illustrator and painter. An opening reception during the Downtown's First Friday events drew record crowds to see her work, not shown previously in the area.



Kurt Pfaff's "Andrew Carnegie Never Anticipated Suzie," (36"x48") oil on canvas, took Best in Show at the Westmoreland Art Nationals at this year's *Westmoreland Art & Heritage Festival*. June

Linowitz was juror. Prizes were announced at the opening reception June 29 at Twin Lakes Park. The Festival ran July 4-7.

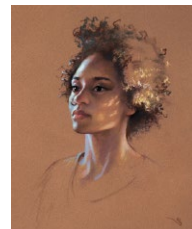
Christine Swann's life-size painting "Abundance" is now in Albuquerque, New Mexico as part of the International Masters Circle Exhibition at the Convention for the International Association of Pastel Societies.

Christine's painting "Dignity" was selected for the 47th Annual Pastel Society of America's



Exhibition: *Enduring Brilliance!* on display September 3-28 at the National Arts Club in New York City. Fewer than 180 works were selected from 1,627 submissions by jurors of selection Jimmy Wright, Michael McGurk, and Debora L. Stewart. Christine will demonstrate a portrait using her son as the model at the Materials Fair.

Christine's article in the June issue of *Pastel Journal* gives a checklist of 9 criteria to consider when assessing the process of a painting.



"Joy" by **Keith Bastianini** was included in Pittsburgh Society of Artists' *Artist's Choice Exhibition*. The digital composition was primarily completed in Photoshop with the figure rendered through 3d modeling. The work is a pastiche of a piece by artist Frank Frazetta. The show opened with a reception on August 3 and ran through the month at Christine Frechard Gallery on Butler Street in Lawrenceville.



"Reverie" (15"x15") by **Anni Matsick** won 1st Place in Art in Common's 2019 *Artists in Our Midst*, on display at Southern Alleghenies Museum of Art in Altoona. The 15-minute charcoal drawing was done in a group session at the **Art Alliance of Central PA** center in Lemont. Anni has 3 pieces in the 56 2D works accepted by juror Stuart Thompson. The show opened August 23, with a reception set for September 18 during the monthly "Wicked Wednesday." It runs through December 7.



Kudos

The Winter 2019 Pittsburgh Quarterly cover, "Snow Angel," AD Anita DuFalla and illustrated by **George Schill**, won the Press Club of Western Pennsylvania's Golden Quill in the Cover Design category. "Work Disrupted," by **Gregg Valley** for Pittsburgh Quarterly was a finalist in the category of Craft Achievement — Illustration: News or Feature.



Continued on next page

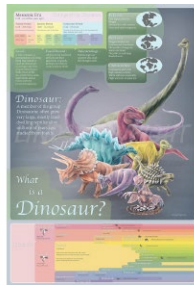
Lindsay Wright's illustration of "Flying Foxes Pollinating a Dorian Tree" was chosen as the artwork for the Guild of Natural Science Illustrators Annual Conference Poster.



2019 GUILD OF NATURAL SCIENCE ILLUSTRATORS ANNUAL CONFERENCE
June 30 - July 6
Brisbane, Australia

REGISTER TODAY! [www.gnsi.org.au](#)
GROW YOUR SKILLS.
EXPAND YOUR NETWORK.
INSPIRE CURIOSITY.

Lindsay's submissions, "Swimming African Penguin" and "What is a Dinosaur?" were accepted into the 2019 GNSI and AIMBI Members Exhibit. A slideshow was shown on screens in the foyer at Queensland Museum, Brisbane, Queensland, Australia, July 1-7, beginning with an opening reception at Queensland Museum. It was also viewed online and at Women's College, University Of Queensland, St Lucia Campus, Brisbane.



Ilene Winn-Lederer's book, *Bestiary: An Imaginary Menagerie* (Imaginarium Editions, 2016) was selected for a Merit Award in this year's 3x3: No.16 Professional Show. The cover and several interiors will appear in their show catalog.



Dave Klug won the very first Reuben Award for Variety Entertainment, "defined as any newspaper, magazine, or online comic feature that contains puzzles, games, activities, trivia, history, or instruction." **Vince Dorse**, a 2014 Reuben winner, was a nominee for the second year in a row for Online Comics-Long Form for his *Untold Tales of Bigfoot* graphic novel. Awards were given at the National Cartoonists Society's annual ceremony on Sunday, May 19 in Huntington Beach, California.

This 2019 White Mountain puzzles catalog "Top Picks" spread features some of **Jim Mellett's** 1000-piece jigsaw puzzles, including his latest



in the decades series, "The New Millennium." Several are marked as best sellers and "The 1980's" is in their top ten.



Another spread with entertainment themed puzzles shows "Television" also in top ten.

"The Holidays" is part of their new "Seek & Find" series. Jim has created over 40 puzzles for the company and 30 can be found for sale [here](#).

Out and About

This summer **Lindsay Wright** participated in art festivals all around the city including the *Millvale Music Festival*, *Squirrel Hill Night Market*, *Polish Hill Arts Festival*, and *Goat Fest* in South Side Park. She has one more event this year, the *Squirrel Hill Night Market* on September 28, starting at 6pm on Murray Avenue.

Phil Wilson was July's featured artist for the **The Artist Guild at Sweetwater Center for the Arts Group** in Sewickley. An estimated 60 people attended Phil's presentation, where he discussed his career starting with his animation work in commercials, TV specials, feature films, and music videos. Phil then talked about his work for Disney, book illustrating, and dinosaur illustration working with renowned paleontologist Jack Horner. The presentation and Q/A session that followed lasted about 2 hours. Many original pieces as well as several printed and published works were on display. Read press coverage [here](#).

Photo by Debbie Maier Jacknin



Finished in under a month, **Gregg Valley's** latest public art project is an enormous painting at the Fox Valley Mall in Aurora, Illinois, about 30 miles west of Chicago. The Fox River runs through the town. "The client wanted a River scene, and I naturally thought that a Fox should be the main image. I added local flora and fauna from the region," Gregg reports. The mural is approximately 215 feet long by 35 feet high, covering approximately 6400 square feet, by far Gregg's biggest work to date. The fox itself is 70 feet long. "I've done large murals, but this is SO huge that getting the proportions of everything correct was quite a challenge!" Video [here](#).



Ashley Cecil has been "blissed out" learning about the power and benefit of urban forests while serving as an artist in residence at Tree Pittsburgh. From her [blog](#): "The aim of the residency artwork was to shed light on what we stand to gain by protecting and expanding urban forests — easing childhood asthma, putting money in our wallets, preventing crime, taming storms. It also repeats a theme of reciprocal service —



when we plant and care for trees, they generously give back to us." June 27 was the opening of the resulting exhibition of work at Tree Pittsburgh's new and sustainably-designed building along the Allegheny River. Guests celebrated trees while enjoying cider made from fruit from a serviceberry trees on Stanton Avenue as well as print-making with fresh leaves. Ashley is shown here with a participant in an August Pattern Printing workshop. Also shown is a print done by a student.

Continued on next page

Yelena Lamm will display her paintings at the 50th Fair in the Park at Mellon Park, September 6-8. Presented by the Craftsmen's Guild of Pittsburgh, an estimated 20,000 visitors will enjoy this opportunity to interact with over 100 regional and national artists working in a variety of mediums. Yelena will also show her work at Mt. Lebanon Artists' Market September 21-22.



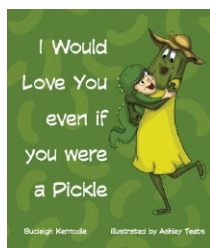
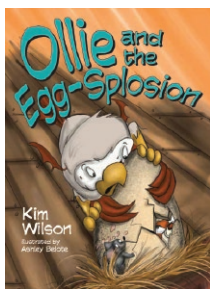
Among those attending **Anni Matsick's** talk on August 26 for the Artists Guild at Sweetwater Center for the Arts in Sewickley were 10 PSI members. Anni outlined her 3 decades in illustrating for major publishers of children's literature, and the transition into "fine art" painting.



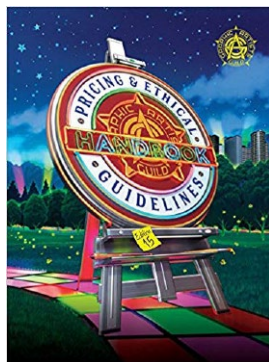
l-r front: George Gaadt, Program Organizer Christine Swann, Anni Matsick l-r back: Keith Bastianini, Bill Vrscek, Phil Wilson, Kurt Pfaff, Gregg Valley, John Hinderliter (Not in photo: Jim Melleit, Ron Thurston, Frances Halley) **Photo by Pam Price.**

Books

Ashley Belote illustrated 3 books recently released by **HeadlineBooks.com**. She did a signing at the American Library Association (ALA) conference June 23-25 in Washington D.C. where she met and traded books with Henry Winkler and his co-author, SCBWI President Lin Oliver. The titles are *I Would Love You Even If You Were A Pickle*, by Bucleigh Kernodle, *The Wonderfully Wild Ones* by Adeline Schneid and Ollie and *The Egg-splasion* by Kim Wilson. See them at **AshleyBelote.com**



Fred Carlson to be Featured in PEGs 16



One of the new features of the next 16th Edition of the Pricing and Ethical Guidelines, in stores by Fall 2020, will be a chapter featuring self-employed graphic artists who have successfully utilized practices that the book promotes, such as unique marketing and self-

promotion, using creativity to maximize income, creating a niche market, collaborating with other professionals to increase business opportunities, protecting intellectual property, etc.

Fred Carlson was chosen as a featured artist because of his long successful career as a self-employed illustrator and his advocacy efforts on behalf of our profession. Fred was selected along with 3 others from literally thousands of creative professionals by Deborah Kantor, PEGs 16 Project Manager & Editor.

In addition to an interview, there will be 3 samples featured and a portrait. The PEGs is published every 3-4 years and is read by over 65,000 professionals in the trade each edition.

Here's an advance scoop on Fred's answers to 3 vital questions as they will appear with many others in the next PEGs — an exclusive to PSInside readers a year before they appear in print nationally!

You've been a long-time member of both the Graphic Artists Guild and the Pittsburgh Society of Illustrators, and you've held offices in both organizations. How important has this involvement been to your career?

Professional organizations are absolutely crucial to career longevity. More importantly, being committed as an officer leads to the vast increase of "on the ground" knowledge of the business that is so valuable. I counsel young illustrators all the time to not just join, sit on the sidelines, and listen, but get in the middle of the action. It always pays off in the long run. Serving others always cycles back to the server being the receiver of reward. How are you going to get the most out of your client budgets unless you know how to price? This is one among many obvious examples. There is always more professional development and marketing that all of us need to be doing: professional organizations give you so many different plans to try. Professional organizations are where you will get the most knowledge, which leads to professional credibility, which leads to clients listening to you with an open ear. As a leader in professional organizations, one also learns the people skills and management skills that improve your own business process.

Graphic artists just starting their careers today seem to be very connected through social media

and know how to use it to promote their work. Do you think it's still important for them to join professional organizations?

Absolutely. Social media tends to be too fragmented — participating in social media for promotion only does not equate with learning everything about the broader market. Remember, knowing the broader market gives you more options in your career planning. Hence, longer career! As creative businesspeople, we also need a sense of challenge to DO better work, and Share with other professionals leads to constant inspiration (provided by the environments of professional organizations). And, very importantly, creative professionals **NEED** organizations to speak on behalf of their profession on larger issues that effect everyone. The communications marketplace is packed with ideas, strategies, techniques, and basic different ways to make images — who speaks for the profession of Illustration and design if it were not for ASIP, GAG, AIGA, and my own local Pittsburgh Sol?

Based on your experience of being successfully self-employed for almost four decades, what advice would you give to graphic artists (those just starting career or have a staff job) who want to work for themselves?

Start with this question: Can you wake up and go downstairs to your studio space and unceasingly work, promote, and pay attention to the details of business management? Every day? With vigor and excitement? There are a lot of distractions at home. Do not spend money (like studio rent, cars or exorbitant source book expenses) unless you already have it saved away. I tell young illustrators that this is the Creative Survival Fund that is only for the growth and care and feeding of your own company. Next question: Can you communicate your personality and reliability AND your imagery in your promotions? There are a lot of easier ways to make a living. Are you a self-learner and do you know where to go to answer business and creative questions? Do you own (not borrowed) your own copy of the *Pricing and Ethical Guidelines*? Last question: Are you ready for the challenge of adjusting to the cycles?

Members, get your work on the PSI website home page by changing your gallery samples often!

Sign in at pittsburghillustrators.org and click on "My Profile" then "My Work Samples" to update.



Illustration by Ray Tolbert

New Members

Kelly Blevins

Brentwood
kblevinsdrawings.com

A charcoal Artist, Kelly works in a world where you will find a host of magical creations. All completed in a black white finish, animal imagery merges with the human body including a wolf hybrid, and an elephant hybrid meditating inside a nest. Crows often appear in her work as well, as an animal totem. Kelly's work has been internationally recognized and published, including places such as the UK, New York and Los Angeles. Drawings have been exhibited in Pittsburgh galleries, including Modern Formations and the Juried Art Show at Three Rivers Art Festival. Over the years her work was included in numerous group exhibitions across the country. In 2016, Kelly and her work traveled to London for a group show at the Exhibitionist Hotel in Kensington. Since then, she has worked closely with the Art of Treason Gallery in Brighton, England which represented her and aided in her career. With a following of collectors from the U.S. and the UK, Kelly has been steadily working towards inventing new ideas and expressions to broaden her drawing skills.



Kim Fox

Pittsburgh
workerbird.com



Kim earned her BFA in Printmaking from the College of Charleston in SC, in 1994. Her childhood in rural western Pennsylvania informs her aesthetic, subject matter and choice of materials. She has been making art and showing her work for 17 years—beginning with more traditional painting and collage when she lived in Florida. After moving back to Pennsylvania, she started to explore the regional arts and crafts with a more rural bent. Five years ago she began working with vintage tins and salvaged wood and patchworking the tin in a way that felt like quilting. Currently she is researching traditional quilting and the stories behind the patterns. Her tin quilts have been shown in galleries in Pittsburgh, Wheeling, WV, Providence, RI, and Brooklyn, NY. In addition, Kim is a designer and illustrator.



Katya Malkin

Pittsburgh



www.katyamalkin.com

Katya is a freelance illustrator and artist working in traditional media, primarily marker, colored pencil, ink and acrylic. Her areas of focus/experience include portraits, children's illustration,



whimsical animal characters, and fanciful cityscapes and houses. You can find her prints, greeting cards and t-shirts at art fairs, in local shops, and online. She also enjoys participating in public art events like Art All Night and the First Night Art Car parade. Katya looks forward to developing her skills and understanding of the business by making connections through PSI.

Jessica Heberle Pena

Pittsburgh
jessicaheberle.com

Jessica is an artist, illustrator and designer. She makes mixed-media watercolor paintings and is working on a 3-part graphic memoir titled This Book = A Body. Currently she is conducting Botanical Watercolor Workshops at local farms including Garden Dreams.



Paul Roden

Pittsburgh
paulsprintstore.com
@prints_paul

Paul spent the first decade of his art career working solely in woodcut printmaking. He enjoyed his meditative time pouring details into intimately scaled works on paper. Now he is interested in the opposite—large, public, colorful murals.



Nina Zivkovic



Pittsburgh
www.ninazivkovic.com

Nina is an illustrator, designer, and art director at ocreations as well as freelancer to musicians, actors, filmmakers, and more. "Utilizing my conceptual skills along with traditional and digital mediums to convey emotion through portraits and unique layouts." Pre-college, Nina studied at Cuyahoga Valley Career Center in Brecksville, Ohio and became Tech Prep Certified in Digital Design. After graduation, she moved to Pittsburgh and graduated in 2012 from the Art Institute of Pittsburgh with a Bachelor of Science in Graphic Design in. Nina says she has worked with "dozens of fantastic clients," including actor, Alan Ritchson, and his team for illustrated posters and designs for their Kickstarter campaign. For Stage AE, she illustrated exclusive concert posters and utilized social media, which cultivated her freelancing career. She gained additional connections with other actors, musicians, and filmmakers where she illustrated album covers, book covers, promo materials, and even beer label designs.

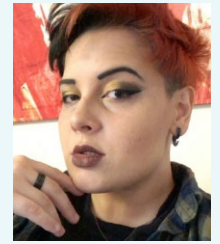


New Affiliate Members

Madyson Amitrone

Washington, PA
mramitrone.wixsite.com/portfolio

Madyson is planning a web comic series as well as other projects. She is a senior at West Liberty University studying Illustration and Graphic Design. Her passion for art began with reading comics as a kid that manifested into a want and drive to one day illustrate her own comics.

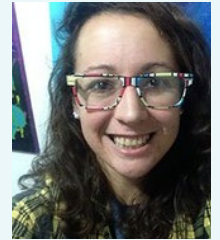


Jen Wagner

Pittsburgh
jenwagnerart.com



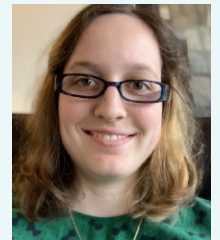
Jen Wagner is a freelance artist who specializes in illustration and acrylic painting. She has been shown individually in her own installation and in juried exhibits. She has created work that has been displayed locally, has experience creating promotional material for her local employers including branding, menu, and apparel design, and has participated in various events in the city of Pittsburgh. Her long term goals include creating a non-profit focused on art and music education and beginning an illustration company. While her art career is her focus, Jen's interests span from outdoor recreation and aquatic sports to crafting unique cocktails.



Anna Wagstaff

Pittsburgh
awagstaff1056.wixsite.com/awags

Anna is a designer, illustrator, and model maker who is also passionate about storytelling. Her art is driven by her love of stories and a desire to bring to life the worlds and characters she imagines. She graduated in May 2019 with a Bachelor of Fine Arts and a major in Communication Arts (commercial illustration). During her time at VCU, Anna designed an issue of a paper on campus, *The Stall Seat Journal*, and had a design included in a show on the library jumbo screen (50: A Measure, A Marker, A Milestone). She was a freelance intern at Generator Interlock Technology, LLC in Richmond where she illustrated 40 of their electrical panels. You can view that work on their [website](http://www.generatorinterlock.com) under Interlock Kit Selection.



Sam Webb

Pittsburgh
sagexlibris@yahoo.com

Sam is the owner of S C Webb Galleries, currently located in Whitehall.



Molly Thompson reports on...

April BOI: To the Point

April 25th brought PSI's first To the Point critical review session, with reviewers **John Blumen**, **George Schill**, **Molly Thompson** and **Phil Wilson**.

To the Point is a new PSI series designed by John Blumen to provide members the opportunity to have specific pieces in their portfolio critiqued by working illustrators with decades of combined experience in commercial illustration, design and animation. The focus is on helping illustrators at any stage in their career to identify potential areas for development in their work, so they can take it to the next level.

John Blumen hosted the event in his home in Brentwood, and six reviewees participated by signing up for the session weeks prior, after notifications were sent out via the PSInside

newsletter, Basecamp posts and membership emails from President **Lindsay Wright**.

Breaking into two groups of two reviewers and three reviewees, members utilized large monitors in separate rooms to display art for discussion. Each reviewee received about one hour of focused feedback on their individual collections of roughly 10-15 pieces.

From my perspective as a reviewer (and a future reviewee) the benefit to this series is clear. I have personally created commercial work for clients just to meet their specs and deadlines, and we all do this. Our clients are happy and we get paid. But occasionally we want to push our product or our personal work to another level, and we strive to advance our current techniques or try out a completely new style. How do we measure our progress? We can market the work and see what sells over time, but with a program like To the Point we can get immediate action items from esteemed illustrators, in a professional setting that promises an honest critique. We don't always get the kind of critical

feedback we really need from a client who is not an artist themselves, or even from our peers in a more informal social setting.

Here is what some of the reviewees had to say about their experience at To the Point.

"I am really glad I signed up for this critique. I am a newer member and I found it really beneficial to meet both veteran and new members in a smaller, more intimate setting."

"This was a great refresher course for those of us who have been out of art school for a few years, and have forgotten a few things! I entered the critique anxious, but went home energized."

"I really appreciated your careful look at my work and valuable feedback. I have some new tools in my toolbox now."

If you are interested in signing up for the next To the Point session, scheduled for September 26, email John Blumen to reserve your spot on a first come, first served basis: john@johnblumenillustration.com

Lindsay Wright reports on...

May BOI: Phil Wilson at Assemble

Phil Wilson started by presenting cells from old animations, and told a great story about how his career started with a ball of lightning. Phil talked about how he started working as a contracted freelance illustrator for Disney and how fussy they are about the depiction of their characters. Over his 18 years of working with Disney, Phil was able to create 9 original character designs. He also brought the artwork and talked about the process of creating 80+ Bradford Exchange plates with Disney and Looney Tunes characters over a 15-year period. Phil also talked about other projects, such as working with Jack Horner on dinosaur books, pop-up castle and

dollhouse books, murals, jigsaw puzzles, and more. Phil also brought in many of his original watercolor/airbrush paleo-artworks and described how he likes to establish lighting and color with a background before adding detail to his pieces. Phil is continuously researching and sketching ideas for new illustrations.

Attendees: President **Lindsay Wright**, VP **Gary Ritchie**, Secretary **June Edwards**, Treasurer **Fred Carlson**, Exhibitions Co-Chair **John Blumen**, Programs Chair **Andrew Pappas**, former President **Rick Antolic**, presenter **Phil Wilson**, **Mark Bender**, **April Brust**, **Frances Halley**, **Naomi Lees-Maiberg**, **Jen Martino**, affiliate members **Andrew McAfee** and **Alex Neish**, new member prospect **Cynthia Lee**.

Photos by Lindsay Wright



PSI assembled listening to Phil Wilson talk at Assemble-front row (l-r): President Lindsay Wright, Jen Martino, Programs Chair Andy Pappas. second row (l-r): April Brust, new member prospect Cynthia Lee, Frances Halley, John Blumen, Mark Bender. third row (l-r): Andrew McAfee, VP Gary Ritchie, Secretary June Edwards, former President Rick Antolic



Phil Wilson leads the PSI May Business of Illustration meeting at Assemble Pittsburgh summarizing a career of almost 51 years



June Edwards and Mark Bender peruse Phil's display.



Phil Wilson answers questions brought forward by (l-r): Naomi Lees-Maiberg, Andrew McAfee, Andy Pappas, Rick Antolic, John Blumen



(l-r) VP Gary Ritchie, President Lindsay Wright, new member prospect Cynthia Lee.

Lindsay Wright reports on...

June BOI: Out of the Gate

We started the June 27 meeting at the West View Hub with a roundtable discussion of how we all generate ideas and some words of advice any of us might have for each other. Idea generation suggestions included; Random Generators (online, books, etc.), Mind Maps, Lists, Daily Sketching, Unrelated Hobbies, Technical Exercises, # Challenges, Behance's Discord, etc.

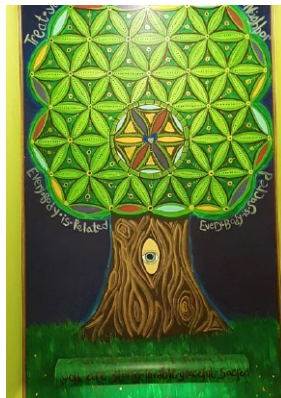
Then we started our sketching session! It was great to use the resources at the West View Hub for this meeting. It was very fun and relaxing to look for ideas in the books, magazines and internet cafe available. We listened to blues and jazz music, snacked on angel food cake with whipped cream and fresh berries, and sketched out our ideas. There were four categories and at the end of the meeting we voted (using fuzzy pom-poms) on the winner of each prompt category. The winning sketches will be featured on the PSI's Social Media, and the winning illustrator of each category received a \$5 gift card to Artists and Craftsman.

Attendees: President **Lindsay Wright**, VP **Gary Ritchie**, Co-Host with West View Hub **Frances Halley**, members **Kelly Ackerman**, **Dave Biber**, affiliate members **Laura Garvin**, **Annie Vaughn**, **Kat Bureman**

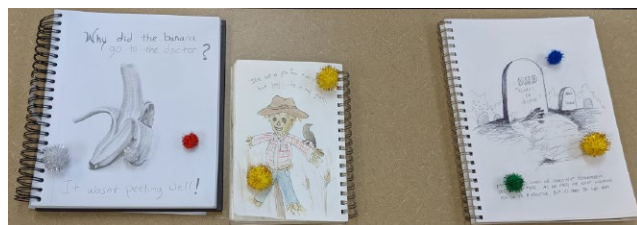
Story behind the creation of The Hub [here](#).



PSI members are sitting in the interior of an actual Boeing 727 jet (4 rows of seats). The West View Hub purchased it after it had been used for a Netflix series that was filmed in the Pittsburgh area. A children's theater was created from the prop, complete with large screen and HD sound system. Front Row: Frances Halley, Lindsay Wright, Kat Bureman Middle Row: Laura Garvin, Dave Biber, Gary Ritchie Back Row: Kelly Ackerman, Annie Vaughn



Mural done by affiliate member Colleen Halley, painted in the coffee nook at at the recently opened West View Hub.



Winner, Something Punny - Dave Biber



Winner, Infographic - Gary Ritchie



Winner, Editorial Design - Dave Biber



Winner, Character Design - Laura Garvin



Photos by Lindsay Wright

June Edwards reports on...

July BOI: Digital Show and Tell

This highly anticipated Business of Illustration Meeting met July 25 at Assemble. **Fred Carlson** began the evening by providing membership and treasurer's information: we are in a very positive position at this point. John Blumen let the attendees know that the jurying process is underway for the Stifel Museum Exhibition with an even 60 PSI illustrators submitting work to the juror.

PSI members **George Schill**, **Molly Thompson**, **Lindsay Wright**, **Gary Ritchie**, and **Jen Martino** presented information about their art and digital techniques, and the software and hardware they like to use. A variety of computers and tablets were available for attendees to experiment with.

George Schill presented examples of the cards he creates for American Greetings. He demonstrated how he creates a character directly in Photoshop by drawing loose shapes with the lasso tool and filling the areas. George uses many tools and techniques to adjust his characters and backgrounds, and has refined a method to add unique textures. The ability to work quickly and skip the usual thumbnail stage has many advantages. His characters retain the loose, fun and wacky quality that comes from working spontaneously. He is able to keep his production level high and to meet tight deadlines, and still have time to experiment with new ideas—a real advantage for this corporate client.

American Greetings is headquartered in Cleveland, OH, and George would like to gather a group to travel there for a tour of the impressive new building. Also, the *Golden Age of Illustration* exhibition from New York City is currently there: plenty of enticements to visit! Information about this possible excursion will be on Basecamp soon.

Molly Thompson presented a close-up illustration of gums and teeth to explain the steps and techniques she developed to create this beautifully convincing medical illustration. In this example Molly first scanned her graphite illustration into Photoshop, adjusted the greyscale artwork in a series of steps, and eventually colorized it. To create her detailed and realistic artwork Molly uses vector- and raster-based software as needed, as well as traditional drawing media. Molly's process allows her to



create accurate illustrations very efficiently, with details, colors, highlights and shading that simulates the best colored pencil techniques.

The main focus of **Gary Ritchie's** presentation was *Expresii*, a software program he used to create a wide range of wonderful digital watercolor illustrations on his Cintique 16 for the Penn Forest Burial Park. *Expresii* is a relatively new software created by a Japanese developer modeled after Japanese and Chinese brushes. Gary demonstrated some of the tools and effects that can be achieved. The attractive watercolor illustrations he created were perfect for this client. His maps of the cemetery, natural areas and hiking trails are inviting, informative and easy to use. Gary also discussed many other aspects of this commission, including the many sources he used to begin this project and the web version so visitors can access the maps on their phones.



Jen Martino presented a slide of an impressive array of sophisticated and expressive character illustrations, and focused on one character to demonstrate how

she uses *PaintTool SAI* (a raster-based program) and a *Monoprice Graphic Drawing Tablet*. She begins with a scan of a refined graphite sketch and retains the fluidity of that sketch while adding textures, colors and details to the



inventive figure and costume. She demonstrated how she can quickly explore the possibilities and make refinements to the character as she works. Jen explained her step-by-step process as well as other features of this software and tablet.

Lindsay Wright set up her high-end Cintiq tablet for people to experiment with. She explained the advantages of the Cintiq and briefly compared it to other devices. She was enthusiastic about how the device is perfect for her illustration work, including atmospheric landscapes, technical illustrations, illustrations for children, and her detailed and beautifully rendered illustrations of animals and nature.

Each presentation was packed full of information and recommendations, with time for attendees to ask questions and compare other techniques, software and devices. After all of the presentations of specific illustrations and techniques were complete the attendees gathered around each presentation area to examine the artwork closely and to try out the software and hardware. This was a very informative and productive meeting!

Attendees (in addition to presenters): Exhibitions Chair **John Blumen**, Treasurer **Fred Carlson**, Secretary **June Edwards**, Programs Chair **Andrew Pappas**, Screening Chair **Kathy Rooney**, members **Kelly Ackerman**, **Rick Antolic**, **Mark Bender**, **Tom Gallovich**, **Vince Ornato**, affiliate members **Annie Vaughn**, **Anna Wagstaff**

Upcoming BOI Meetings

Business of Illustration meetings are held on the last Thursday of the month from 7-10pm.

Attendees should bring a beverage and/or a snack to share. Details on locations and featured artists are posted under Events on the PSI website and distributed via email.

September 26: "To the Point: Part 2"

Continuation of critiques at reviewers studios.

October 31: "Death and Taxes"

Costume party and workshop on business accounting and taxes, hosted at Karl Huber home studio on North Side.

Fred Carlson reports on...

August BOI: Annual Summer Picnic and Newcomers Orientation

What everyone considered the most perfect day of the summer greeted arrivals on Thursday, August 29, at a picnic hosted by Nancy & **Fred Carlson** at their home/studio in Monroeville.

Grilled burgers & dogs, fried chicken, and a host of side dishes fed the assembled between 6 and 8pm, followed by an orientation agenda for the benefit of newcomers led by President **Lindsay Wright**. Held in the living room presentation space, the program continued as committee structures were described and new volunteers were encouraged to step into action. **Andy Pappas** described the Program committee goals. Exhibition team co-Chairs **Molly Thompson** and **John Blumen** talked about the upcoming Stifel PSI Collected Works show. VP **Gary Ritchie** and Lindsay described the Discord communication platform that we are investigating. Scholarship committee was described by **George Schill** and Treasurer **Fred Carlson**. Finally, Fred and Lindsay walked everyone through a big-screen tutorial on the resources available to members on our own PSI website and the new features integrated into the site. The Phil-Harmonix (**Phil Wilson** and **Fred Carlson**) took their chairs and guitars to play an electric set from

8:45 to 10:10pm by the glow of the backyard fire pit. Affiliate member **Alex Neish** was bid farewell as he is headed to Savannah to get a masters in animation at Savannah College of Art & Design, a program that could take from 1-2 years as Alex chooses his final degree.

Fred Carlson described a field trip to Greensburg on October 2 to hear designer/illustrator John van Hammersveld at the Westmoreland Museum.

Winners of the creative side dish competition were **Alex Neish** (potatoes au gratin), **Ilene Winn-Lederer** (Israeli cole slaw), and **Andy Pappas** (home-made grape leaves, both vegetarian and lamb filled with special Greek dipping sauce)

Other members and guests attending were:

Secretary **June Edwards**, new intern **Madyson Amtrone**, **Cassie Bolan**, Chris & **April Brust**, **Frances Halley**, **Tom Hoover**, **Jen Martino**, **Jim Mellett**, **Jeanine Murch**, **Vince Ornato**, **Joe Wright**, **Nina Zivkovic**, Joe Durko, Jeff Lederer, and new member prospect Caleb Coleman.

Photos:
Lindsay Wright,
Nancy Carlson



PSI Welcomes Our New Intern!

PSI is pleased to announce that new student affiliate member **Madyson Amtrone** has signed on for academic credit to be a PSI intern for the period mid-August to mid-December 2019. Her academic credit has been approved by West Liberty State University for the fall term. The internship will involve these activities: Newsletter

assistance as assigned, scholarship outreach, 6 studio visits with PSI members, mentorship critique, and our PSI officers may assign her other duties as well. Madyson's internship will benefit her future professional career goals. Her work commitment is for 12 hours of service to PSI per week. Her work on behalf of our PSI Scholarship Program would be involved in outreach to western PA colleges with art/design programs to gather a list of faculty contacts that PSI can approach with a new scholarship outreach using art submission software (ArtCall).

2019 Treasurer's and New Member's Report

by Treasurer/New Member Contact
Fred Carlson

(Figures good through July 25, 2019)

Income 2019

Dues	\$9,442.90
Ruddy Awards contribution from Marsha Ruddy	\$1200
Exhibition Fees	\$560
Other Income	\$115.50

Total Income \$11,318.40

Expenses 2019

Total Expenses	\$6,014.87
----------------	------------

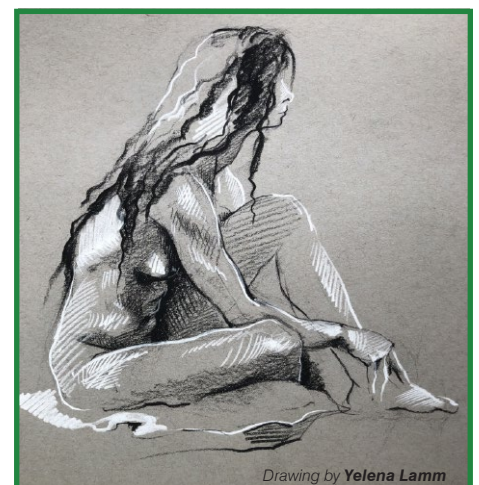
2019 Net Proceeds + \$5,303.53

PSI Cash-On-Hand \$18,612.14

(Citizen's Checking \$16,213.69;
Citizen's Savings \$2,322.14; PayPal \$76.31)

PSI Dues and Membership Report 2019

Membership 7.25.2019	179 members
Full members 7.25.2019	137 full members
Affiliate members and affiliate comp members	41 (35 Affiliate and 6 Affiliate Comp members)
New Members still TBA by screening	1
Members deleted as of 7.25.2019	13
Members Upgraded from Affiliate to Full 2019	1
PSI New Members 2019 (9 Full, 5 Affiliate, 1 TBD)	15
2019 PSI New Member Application inquiries last 12 mo:	10



Drawing by **Yelena Lamm**

Life Drawing at Panza Gallery

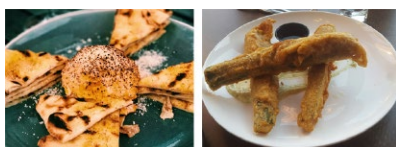
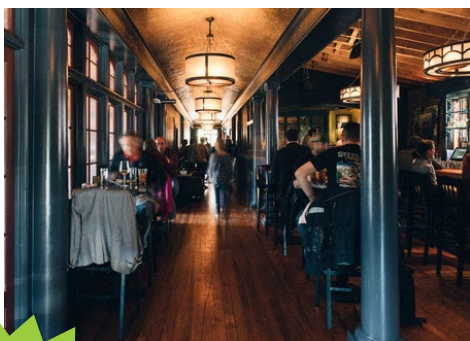
Long Pose Monday: Mondays 6-9pm \$10
Life Drawing: Thursdays 6:30-9:30pm \$10
Saturday Sessions: Saturdays 10am - 1pm \$10

Coffee, pastries & drinks served.
Enter basement gallery on left side of building.

www.panzagallery.com

SECOND TUESDAY SOCIALS AT THE ABBEY!

Hang out with colleagues, get feedback on new projects and marketing ideas, share trade talk, and just have fun!



"You (can) talk about drawing and painting for 2 hours without anyone telling you their little kid is a 'great artist.'"

Vince Ornato

"PSI's Tuesday socials have long been a source of fun and inspiration! I love the opportunity to speak with new/old members, catching up on projects in progress, sharing experiences and of course, the great food!"

Ilene Winn-Lederer (ASIP Representative)

"I find it very valuable to bring my finished work with me to our socials. I get specific and substantial feedback from our veteran illustrators. Usually that means the work that I thought was finished turns out to be a work-in-progress still. But their feedback always makes my work better, and that's really what I'm after."

Rick Antolic (President 2005-2008)



Photos: Hannah Garrison

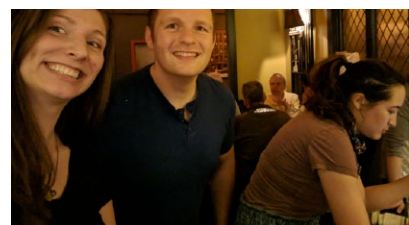
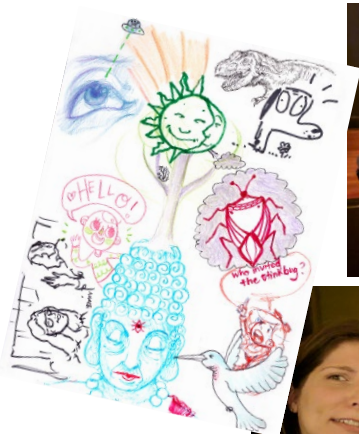
**Next
PSI Social
Gathering:
Tuesday,
May 14**

Every month, PSI hosts our social from 6:30-9pm at The Abbey on Butler Street in Lawrenceville. There are 2 parking lots and plenty of on-street parking at this location near Allegheny Cemetery. We have a nice separate riser area past the bar in a comfortable open space, and the service is great! PSI provides the appetizers so you pay only for your beverages. All members should be getting a reminder email from the Board a day or two before the social, but remember the night is set in stone and should be marked in advance in your calendar!

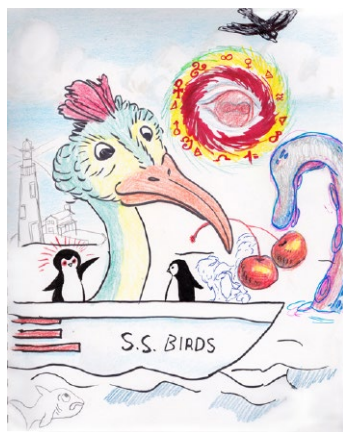
April Social

It was a great time, and there was a good amount of discussion about our committees, and the Social Media Committee even had a nice pow-wow about their goals for the month. They are planning to be the main picture takers of our events to share our smiling faces on our sites.

Attendees: President **Lindsay Wright**, Exhibits Co-Chairs **John Blumen** and **Molly Thompson**, Social Media Chair **Genevieve Barbee-Turner**, Scholarship Chair **George Schill**, Programs Chair **Andrew Pappas**, ASIP Rep **Ilene Winn-Lederer**, **Mark Bender**, **Frances Halley**, **Tom Gallovich**, **Rhonda Libbey**, **Jen Martino**, **Jeanine Murch**, **Vince Ornato**, **Phil Wilson**, affiliate members **Laura Garvin**, **Andrew McAfee**, **Alex Pathos Jr**, **Sara Tang**.



May Social



June Social

The second-Tuesday social held June 11 brought more new members out as the weather was perfect. The "Illustration 101" program set for June 27 at **Fran Halley's** was discussed. This is the perfect program for improving your square one ideas and presentation sketches to sell provocative concepts to clients. The upcoming Stifel survey show was also discussed. More table sketching was accomplished and every morsel of the 4 appetizers were finished off!

Attendees included: President **Lindsay Wright**, Treasurer **Fred Carlson**, Exhibition Co-Chair **John Blumen**, Social Media Chair and former VP **Genevieve Barbee-Turner**, Programs Chair **Andrew Pappas**, **Mark Bender**, **Frances Halley** and husband John, **April Hartmann**, **Jen Martino**, **Sophia Marie Pappas**, **Jim Prokell**, **Gregg Valley**, **Phil Wilson**, **Abby Winkler**, new full member **Nina Zivkovic**, new affiliate member **Jen Wagner**, and new member prospect Julianna Zito.



July Social

Members, from newly joined to some OGs, participated in creating another fun collaborative sketch while discussing the upcoming PSI exhibit, trends in requested illustration styles and updates on our new and ongoing projects.

Attendees: President **Lindsay Wright**, VP **Gary Ritchie**, Secretary **June Edwards**, Exhibit Co-Chair **John Blumen**, Programs Chair **Andrew Pappas**, Presenter **Phil Wilson**, **Judy Emerick**, **Frances Halley**, **Yelena Lamm**, **Rhonda Libbey**, **Jen Martino**, **Jeanine Murch**, **Vince Ornato**, affiliate member **Alex Pathos Jr.**



Fred Carlson reports on...

August Social

The Abbey was sporting a new look on August 13 in the counter/serving area near our reserved space, and this was widely appreciated by everyone present! More room for everyone = more fun and less cramping! A rainy Tuesday did not deter socially-minded PSI members as the conversation revolved around new markets (some being expressed in our new show opening at the Stifel Fine Arts Center in 3 weeks), honoring Mark English after his recent death, discussions about using sketch stages or going right to finish with clients, and welcoming **Gregg Valley** back

after his recent gigantic mural commission for the Fox Valley Mall in Illinois. Some pieces for the upcoming Stifel show were brought to the social for transfer to volunteers who will bring the art to Wheeling on August 28. **Fred Carlson** reminded attendees about the Newcomers Picnic at his studio/home on August 29--and **Phil Wilson** verified that the Phil-Harmonix PSI pickers will be present at the picnic.

Attendees included: PSI Exhibition Co-Chair **John Blumen**, Treasurer **Fred Carlson**, Former President **Rick Antolic**, members **Frances Halley**, **April Hartmann**, **Karl Huber**, **Rhonda Libbey**, **Alex Neish**, **Andrew Pappas**, **Gregg Valley**, **Phil Wilson**, affiliate members **Alex Patho Jr.**, **Anna Wagstaff**

Save instantly with
WEB MATCH REBATE*

with **FREE Preferred Card**

Blick Art Materials

5534 Walnut St. Pittsburgh PA 15232
412.432.1945 **UtrechtArt.com**

* If our website has a lower delivered price, then a Web Match Rebate will be provided.

BLICK
art materials

Utrecht
Art Supplies

10% OFF

all non-sale items with PSI members card

Artist & Craftsman Supply

5603 Hobart Street, Squirrel Hill
412-421-3002
ArtistCraftsman.com

THE ARTIST GUILD
AT SWEETWATER CENTER FOR THE ARTS

Meetings are held every last Monday of the month at 7pm unless otherwise noted. Updates are posted on The Artist Guild at Sweetwater Center for the Arts Facebook page.

Featured speakers schedule:

April 29:
Debbie Jacknin / Mosaics in Stained Glass

May 27:
Jeannie McGuire / Watercolor

June 24:
Phil Salvato / Master oil portraits painter

July 29:
Phil Wilson / Disney art & illustration

August 26:
Anni Matsick / Children's illustrator

September 23:
George Gaadt / NFL artist

October 28:
Gregg Valley / Muralist

November 25:
No meeting

December 30:
No meeting

January:
Pat Olliffe / Marvel comic book illustrator

Pittsburgh Society of Illustrators presents:

The Collective Works of PSI

September 5 - October 26, 2019
Stifel Fine Arts Center,
Wheeling, West Virginia

Opening reception and awards ceremony
6:30 - 8:30pm, Thursday, September 5



Join us September 5 at the beautiful Stifel Fine Arts Center to honor our award winners and view our latest group exhibition with an enthusiastic local audience.

PSI is displaying over 50 framed pieces, including personal art as well as examples of illustrations applied to products present in our everyday lives. Our goal is to engage with Wheeling residents and expand PSI's reach to budding illustrators and art buyers alike, by highlighting the breadth and impact of illustration as a profession.

Sponsored by United Bank of West Virginia, with financial assistance from the West Virginia Department of Arts, Culture and History and the National Endowment for the Arts, our exhibit will showcase traditional ways of working alongside newer techniques and applications.

Stifel draws large crowds for these events, which are free to the public and include refreshments. We hope you will join us to celebrate, and also to vote for the People's Choice Award winner!

The Collective Works exhibit features 51 pieces by 38 artists accepted from 158 pieces submitted by 61 artists. Submission was open to full members of PSI. Juror for selection and prizes was **Brian Fencel**, a Professor of Art at West Liberty University.

Prizes to be awarded:

1st: \$1,000

2nd: \$750

3rd: \$500

Peoples Choice: \$300

List of accepted Artists (38):

Rick Antolic, Keith Bastianini, Liz Beatty, Ashley Belote, Mark Bender, John Blumen, April Brust, Fred Carlson, George Gaadt, April Hartmann, Tom Hoover, Karl Huber, Bernadette Kazmarski, Larry Klukaszewski, Ed Kuehn, Naomi Lees-Maiburg, Rhonda Libbey, Ron Magnes, Ron Mahoney, Anni Matsick, Jim Mellett, Leda Miller, Mike F. Miller, Jeanine Murch, Bill Panos, Andrew Pappas, Kurt Pfaff, Jim Prokell, Gary Ritchie, Rachel Arnold Sager, George Schill, Dan Senneway, Christine Swann, Molly Thompson, Bill Vrscak, Phil Wilson, Ilene Winn-Lederer, Lindsay Wright

Watch for a PSInside Special Issue covering the show's opening reception, winners, and all entries, coming in September!



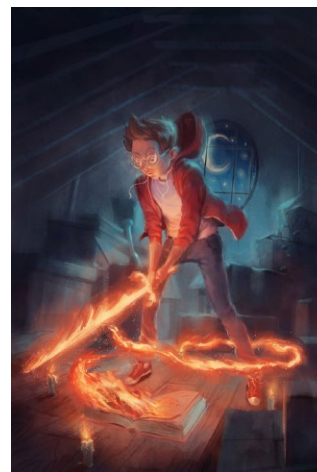
"Amazing Adventures" (8"x6") gouache/digital, by Liz Beatty



"The Listeners" (36"x24") digital, by Keith Bastianini



CATalyst for Clues" (12"x8") book cover art, pastel, by Bernadette Kazmarski



"Unsupervised Magic" (16"x24") digital-Photoshop, by Mike Miller



"Mermaid" (30"x20") oil and gold leaf, by Rhonda Libbey

Juror Brian Fencel:

"These artists understand composition and design at a deep level, are skilled with their chosen media and are amazing visual storytellers."

The Oglebay Institute Blog and News



"Up All Night" (11"x14") digital art/cell phone case/t-shirt, by Dan Senneway



"Homesick and Buddy" (17"x23") watercolor, by Bill Vrscak

Spotlight on... PSI's Caricaturists

Subjects were amazed and delighted with wild versions of their visages on paper, done in minutes and ready to take home!

Some of the numerous recent public events pictured are long-standing gigs for seasoned caricaturists John Manders, Howard Bender, and Vince Ornato. But you'll also find them popping up at weddings, proms, and other private occasions offering the popular souvenir.

John Manders uses a Sharpie and a sketch pad to capture a likeness in around 4 minutes. It's a performance that entertains his audience while waiting in line (which moves fast). John is well established as an illustrator of over 30 children's books, and his fanciful style carries over in these take-home treasures. "John Johns' work is the benchmark," he says, citing his work for the Pittsburgh Press Roto section. Recalling his time in the '70s as a student at the Art Institute of Pittsburgh while Johns was an instructor, John says, "He taught me so much — even how to behave at a gig."



1 This June prom couple waited into the wee hours to be caricatured by John. **2** For attendees at a May wedding, John added his custom touch with stickers on bottom right. They feature the bride and groom's faces, names, and date. **3** John's subject at a company picnic in August, upstate New York. **4** John tackles a canine subject.

Howard Bender is a professional comic book illustrator who has worked for many of the top publishers including Marvel, DC, Disney, Harvey, Archie and Heroic. Imagine the delight of patrons at this year's Pittsburgh Wizard World Comic Con who found the sponsor had commissioned him to draw caricatures free to them for an hour each day, portraying each as their favorite super-hero. "Not only was it great fun, it helped me up my speed!" he says. The event was held July 26-28 at David L. Lawrence Convention Center.



1 Howard at 3 Rivers ComicCon in May. **2-4** These Super-heroes at Pittsburgh Wizard World got free drawings from Howard. **5** Howard drew caricatures non-stop in June at the Three Rivers Art Festival.

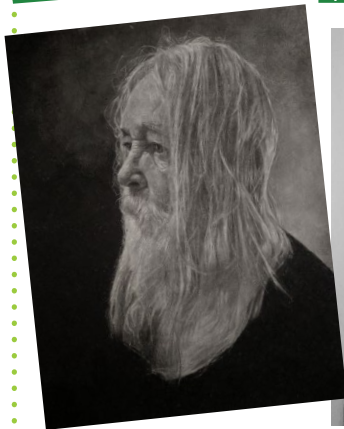


1 At the 4th of July Celebration at Point State Park, Vince caricatured 3 young women from the Congo in Africa. **2** Vince often draws at senior facilities like one where he captured this remarkable centenarian along with her great-great-granddaughter. **3** For a third year Vince drew at the annual party held by Steeltown Productions, a group of creative people involved in theater and film production. **4** Vince with 2 young subjects at Seven Springs Oktoberfest.

Vince Ornato has been drawing caricatures at events for 37 years. He started out this part of his career by managing the sketch portrait stand at Kennywood Park. He also conducted training sessions at theme parks including Busch Gardens, Sea World, Geauga Lake, and Idlewild. Additionally, Vince worked in advertising as a graphic artist, and developed his skills as a painter. Vince is hired regularly to draw caricatures a social gatherings, including weddings, schools, business functions, and more: "Anywhere people have faces."



1



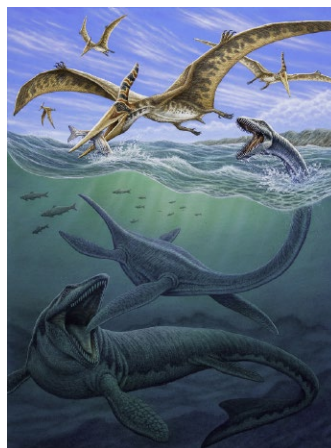
2



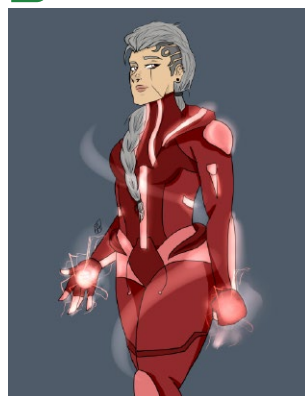
3



4



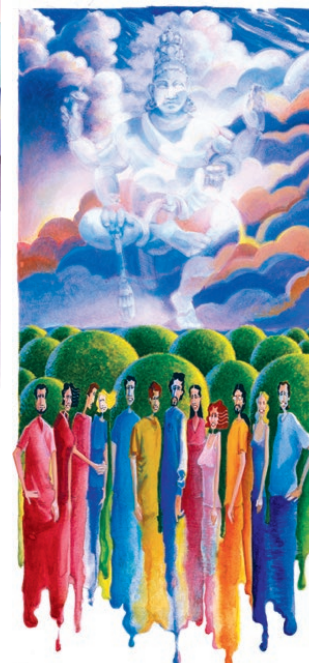
7



5



9



10



6

8



1. These charcoal on paper drawings by new member **Kelly Blevins** are titled "Larry" (36" x 48"), and "Portrait of Jeff" (60" x 80").

2. **Rick Antolic** did this on-site sketch at the St. Nicholas Greek Food Festival Friday, May 10, across the street from The Carnegie Museum in Oakland. "It started to rain soon after I sat down, so I rushed. I'm not one of those artists who works well under pressure."

3. This new painting by **Phil Wilson's** is titled "Sarcosuchus attacking a group

of Ouranosaurus." Done in acrylic and measuring 18"x24", it depicts the 39-foot crocodile Sarcosuchus with its 6-foot-long jaws attacking a group of 27-foot-long Ouranosaurus. Both were found in Africa and lived during the early Cretaceous period there.

4. In this scene, Phil depicted the vicious circle of survival by ocean-going reptiles of the mesozoic era seas. It's done in acrylic and measures 18"x24".

5. **Tom Hoover** created this illustration for shirt graphics for the 145th Run-

ning of the Kentucky Derby offerings by Fanatics.

6. This map production was done by **Gary Ritchie** for 35-acre Penn Forest Burial Park in Penn Hills. The watercolor-painted basemap includes roads, buildings, and walking trails. A printed version is offered on-site; web version available [here](#).

7. This piece by new associate member **Madyson Amitrone** was made digitally with the program Paint Tool Sai. It is a character she designed and plans

on using in future projects.

8. "Implementation" by **Jim Prokell** is an editorial illustration for *The McKenna International Review*, legal magazine targeting executive Directors of major law firms.

9. Jim created this promotional poster for Sungate glass, PPG Industries.

10. This editorial illustration titled "Holi-Color" was done by Jim for University magazine.

Continued on next page

11



12



13



14



15



16



17

18



11. New member **Kim Fox** shares the story behind this first small-scale narrative mural to be applied to tea towels, prints and tees: "I have created narrative murals on-site for private homes, Sapling Letterpress Studio, Earth Inspired Salads restaurant, and a gallery exhibit at the Pittsburgh Glass Center, but I wanted to find a way to scale them down for my product line. This one includes some obvious Pittsburgh favorites but also a lot of my personal loves like the Banjo Club and Peregrine Falcons."
12. "This was a fun one to do," according to **George Schill**, for AD Anita Dufalla. It's a 2-page spread for the Pittsburgh Quarterly accompanying a funny story about a fire station's much anticipated steak night invariably being interrupted by fire calls.
13. This series of covers was done by George for ONSVoice Magazine. The issue is about home care and treatments.
14. This cover art relates to a story titled "A Rising Wave-The growing role of caring for older adults."
15. This one is on the topic of Psychiatric Disorders.
16. New Member **Paul Roden** shares this photo of a mural he did in June, in Easton.
17. **Taylor Gallery** provided cover art for the Sunday, June 2 New York Times Arts & Leisure section. It headed the story "Brutal Injustice" — As a Netflix series revisits the Central Park jogger case, a writer who covered the original trial looks back on what led to the five boys being wrongfully convicted and imprisoned for years.
18. Here's a spread Taylor did for the Forbes investigation, "The Truth Behind Trump Tower Moscow," by Dan Alexander and Richard Behar. The project at the core of the Mueller investigation wasn't a well-planned conspiracy. Instead, an unprecedented look inside the deal reveals a stunning degree of risk, with Putin at the center of it, for relatively little potential reward.

Continued on next page

20

19



21



22

23



27



24



25



26



19. This whimsical interpretation of the city of Pittsburgh was created by new member **Katya Malkin**. It is featured on greeting cards and kids' t-shirts. The original was done in watercolor, marker, and ink.

20. "Tell Me Lies, Tell Me Sweet Little Lies" (watercolor, pen, ink, color pencil) was done by by **Mark Brewer** for an article on little white lies.

21. Here are 2 more of Mark's "Brewer's Birdz," shown on the front page.

22. **Kit Paulsen's** recent commission was "An absolute joy to paint. My client wanted realism, so I took my time and worked as much detail as I could into this."

23. New affiliate member **Anna Wagstaff** shares these samples of recent work. The portrait of Spencer Reid from Criminal Minds was done using Prismacolor pencils. The other Illustration was inspired by Sammy Keyes books, done digitally in Procreate.

24. "Issac's Blessing" is from **Ilene Winn-Lederer's** current book project, *19 Blessings: An Essence Of The Amidah* (A Visualization of The Core Daily Prayers in Judaism).

25. You can find the Cheshire Cat and **Rick Henkel's** other designs at his **Threadless store**.

26. Here is **Anni Matsick's** 2019 t-shirt design, done annually for the **Children & Youth Sidewalk Sale** at the **Central Pennsylvania Festival of the Arts**. This

year's event took place on Allen Street in downtown State College, Wednesday, July 8, preceding the 4-day Arts Festival.

27. "Winter is Coming" by new affiliate member **Jen Wagner** is done in colored pencil, acrylic paint, and pen. Its purpose is to comically represent the stress involved with an impending winter storm.

Continued on next page



28



29



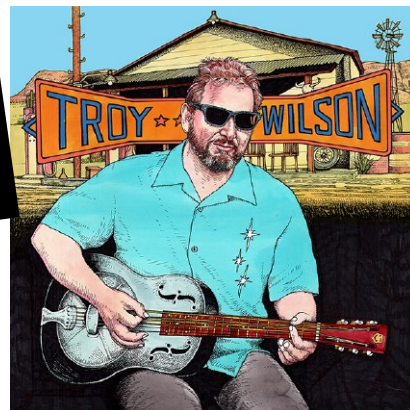
30



31



32



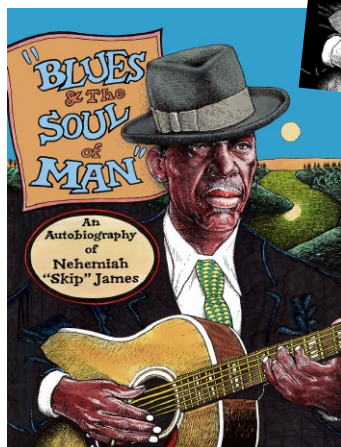
33



34



35



36

28. The flower is a botanical which new affiliate member **Jessica Heberle** has been using to self-produce eco cards and prints.

29. Jessica sent this sample of the graphic memoir *This Book = A Body* that she will self-publish in the Fall.

30. **Lindsay Wright** recently completed 2 new color pencil drawings to sell at art fairs and in her online store. The Wolf portrait is 5"x7" and the Goat Tree is 8"x10". According to Lindsay: "Goats are historically used to harvest the fruit of argan trees in Morocco. By eating the fruit they make it much

easier to extract oil from the excreted nuts. Check the ingredients list of your shampoos, lotions, and other 'hydration' products to see if a goat helped with the making of your cosmetics!"

31. New member **Nina Zivkovic** shares this Janelle Monáe conceptual portrait: "Sincerely, Jane: Suite I Black and White Overture," the first in a new personal portrait series.

32. "Girl Gang" is Nina's poster design for Women Who Rock's Stage AE Concert.

33. Here is **Fred Carlson's** latest project

for Troy Wilson, musician from Australia who has used Fred Carlson Illustration for his last two "Wilson & White" covers as well as his last 3 solo CD covers. Troy finds that using Fred for his music packaging and advertisements is creating brand recognition in the music industry in Australia and he is one of the busiest performers in Australia these days. The b/w drawing was sent and approved July 16 and the finished color art was sent 2 days later.

34. Fred's Skip James book cover was completed in late July for Mel Bay/

Guitar Workshop after 3 weeks away in Sweden, Switzerland, Germany, Austria and northern Italy. "Nothing more American than Skip James," he says.

35. This Hidden Pictures scene, including some mischievous cats among those gathered for a class photo, was drawn by **Pat Lewis** for the September 2019 issue of Highlights for Children magazine.

36. These recent 18"x24" watercolor paintings by **Yelena Lamm** are the largest she has ever created using this medium.