

Inside

www.pittsburghillustrators.org



This issue:

Member News	p.1
Announcements	p.4
Meetings Recap	p.5
Spotlight	p.6
Behind the Brush	p.7

Editor: Anni Matsick

Reporters:
Rick Antolic
Fred Carlson
Molly Feuer

Design & Production:
Yelena Lamm



Mad Mix

"Badlands" is from **Angela Fullard's** graphic story, "The Oddlings." The 10"x14" mixed media piece, like another of her works shown on page 7, is done with watercolor, oils and Copic marker, altered digitally.



My Spot

Anni Matsick

We're saying goodbye to summer with this last burst of green... and looking back at July's garden retreat

on page 5, where it is fondly recalled with pictures of our group in the lush setting, sharing friendship, activities and good food. In Member News you'll read about late-summer gallery and outdoor art shows, including one which selected a member's art for use on their poster this year.

August's Spotlight illuminates the backstory on an intriguing film-making project completed in five weeks by one of our newest members. An update on the membership is on page 3 along with a list of the top five reasons why attending PSI's monthly Social Night is highly recommended. It's where you're likely to find the artists whose work you'll admire in Behind the Brush, which should be reason enough!

Friendly Tribute

Vince Dorse celebrated two years of his online comic, **Untold Tales of Bigfoot**, on August 13 by sharing this fan art by **John Manders**. In the posting Vince wrote, "One of the great things about being a part of the Pittsburgh Society of Illustrators is getting to know some of the most talented illustrators in the business. It's a great way to learn from the pros and an excuse to get out of the studio every now and again for some human contact. And, as you'll see (here) it's a great way to land some devastatingly beautiful fan art for your comic — in this case, from talented children's book author and illustrator, John Manders." The gouache and colored pencil painting, which shows main characters Bigfoot and Scout, in Vince's words "captures the idea of this little pup, lost in the woods, with a guardian to watch over him who's a fundamental force of nature, linked intrinsically to the environment around him." Get more backstory on the weekly strip by liking Bigfoot's [Facebook page](#).



Select Seating

This hand painted chair by **Susan Castriota** was done for an upcoming November auction to raise money for the neonatal unit at Magee Women's Hospital. She credits the unit for saving her daughter Bethany's life almost 32 years ago. A portrait of Wilson, the little dog from Susan's series of children's books, appears on the chair's back. Polite words and phrases are painted on various parts in colorful letters to carry out the theme from *Wilson Learns Manners*.

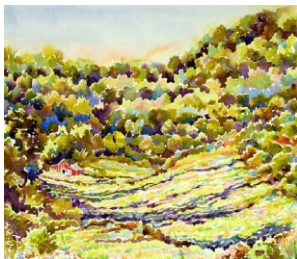


On Exhibit

Three prints by **Mick Opalko** were on display in The Art Institute of Pittsburgh gallery August 2-14 with the Pittsburgh Print Group. "The Run #1" is a woodcut. "Connie's Garden" is a linocut and "A Memory of Pittsburgh's Past" is a woodcut which has a blind embossing of the steel mills in front of the houses on the hill.



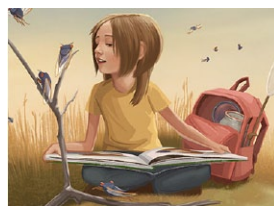
"Wise One," a 14"x9.5" graphite and colored pencil work by **Kelly Ackerman**, was selected for the Washington County Historical Society's 21st *Art in The Garden* show. It's coming up Sept 14 from 2-6 pm in Madeleine's Garden at the LeMoyné House, a historic venue in Washington, PA. **Kit Paulsen** has had work in the show the last seven years. "Early Morning Shadows" is the view down the hill from her farmhouse.



PSI veep **Ashley Cecil** and President **Evette Gabrielle** pose with the sign at their opening reception for *Unblurred* at Artisan Pittsburgh, 5001 Penn Avenue, held Friday, August 1. Each showed work featuring insects, in very different ways. Ashley uses her original artworks to develop new patterns that are custom printed on fabric and sewn by her into a variety of textile



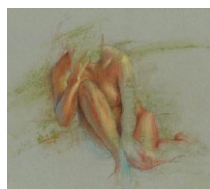
products. Evette's illustrations were from her most recent picture book *Hocus Pocus Red Eye Locust*, a rhyming 32-page picture book which features a retro styled six-year-old female protagonist who, with help from Momma, not only learns to overcome her paralyzing fear of insects, but is delighted when a swarm of locusts hatch in her backyard. The show runs through August.



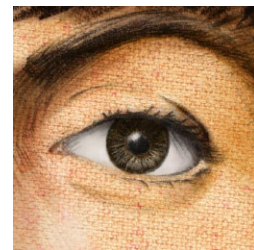
Fred Carlson and **George Gaadt** were jurors for the *Associated Artists of Butler County Motorcycle-themed show* that opened August 8 and may be viewed through September 5. **Bill Vrscek** received Second Prize for his piece "Gettysburg Bike Week." Works by **Ron Mahoney**, **Bill Vrscek**, and **Justin Macioce** are included, and the judges have work hanging in the "Judges Section" of the gallery.



One-color conté figure drawings by **Nora Thompson** are headed for display in her friend's medical practice office. The more colorful ones will be offered for sale at the Art Works gallery shop in Johnstown.



Shown is a detail from a 24"x36" mixed media piece by **Joe Winkler**, which will be printed on canvas when completed, for an October exhibit at the Galleria in Mt. Lebanon.



Kudos

Ilene Winn-Lederer received a merit award in the 2014 3x3 *International Illustration Show*



No. 11 for her entry in the Self Promotion category. Five images from her Codex Gastropoda series will be showcased online and in the print publication to be released in October.

Children's book icon Tomie dePaola has named **Anni Matsick** as a *semi-finalist* in his annual award competition for 2014, open to members of Society of Children's Book Writers and Illustrators (SCBWI). Entrants created a wordless story with a character moving through a six-panel sequence. Part two of the assignment will be given in September. One finalist will be chosen by Tomie to receive free tuition to the 2015 SCBWI Winter Conference in February. Anni was a finalist in the 2012 competition which called for black and white artwork illustrating a scene from a middle grade classic novel.



Out and About

Fred Carlson was tapped as a juror, along with art educator Ken Cutway, for the *Monroeville Arts Council Annual Show* on July 23. This is the fourth time Fred has served for this group.

Mary Dunn is working on becoming a certified instructor using the Bill Alexander wet on wet oil painting method. "It seems that more and more people who want to learn oil painting use this type of method," she says. "Additionally, I just became an event coordinator and artist for the Colors and Bottles company. I go to different restaurants/bars, where we paint crazy, pop and abstract acrylic paintings." To host a private event or suggest some restaurant bars that would be open to this activity, contact Mary at 412-576-1423.

Danielle Amiano will be one of the artists showcased in the 5th anniversary Projekt 50/50 *Rise and Grind* show. The show will take place

at Belvedere's at 4016 Butler St. in Lawrenceville on Friday, September 19. Each artist participating will be painting a skateboard in the medium of their choice.



Bill Vrscak will return to the historic Riverside Inn in Cambridge Springs for a weekend watercolor workshop this October

17-19. Attendees can enjoy the Inn's atmosphere and dining room while improving their painting skills. This workshop is geared toward painters of all intermediate to advanced levels. Work will be done indoors, but students may work outdoors on their own and return to the studio for the group critique sessions. Most meals and a reception are included in the fee. For more information call The Riverside Inn at 1-855-217-5153 or Bill Vrscak at 412-761-3759 or email bill@billvrscak.com.

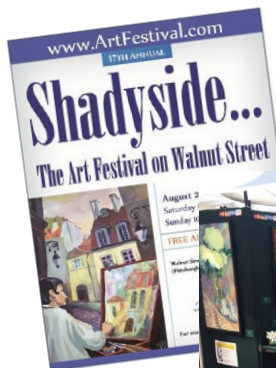


The Pittsburgh Holocaust Center and the Toon-Seum held the *Chutz-Pow!* Comic Book Launch Party on August 14, in a closed-off street in front of the Toonseum at 945 Liberty Avenue. The book was created by Pittsburgh illustrator/cartoonists including **Mark Zingarelli**, Dave Wachter, Marcel Lamont Walker, Chris Moeller and

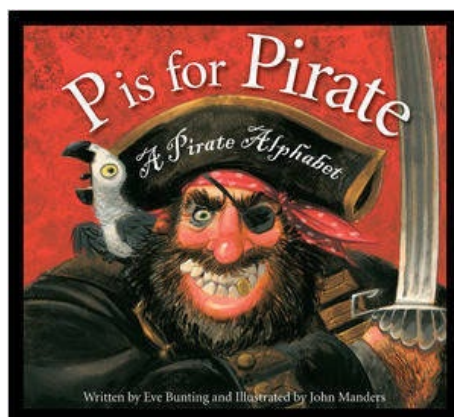


local writer, Wayne Wise. Shown is a panel from the first page of the six page story Mark did on Les Banos, well-known Pittsburgh photographer, about his involvement in WWII as a spy for the Allies posing as a Nazi SS soldier. The event had live music, activities, food trucks, and the exhibit of artwork from the book that also appeared at this summer's *Three Rivers Art Festival*.

Yelena Lamm's 2005 illustration was used as a poster image for this year's *Shadyside... The Art Festival on Walnut Street*. Prints of her Pittsburgh Point piece commissioned last year as result of PSI lead was a best selling item. Yelena also displayed new still life paintings.



New Book



The newly-released picturebook, *P is for Pirate* by Eve Bunting, features artwork by **John Manders**. "This is what I was working on last summer," John says. "I think Art Director Felicia Macheske chose me not only for my geekiness for everything pirate, but also because my humorous style enabled me to lighten up pictures of flogging, hanging and other grim and sordid aspects of a pirate's life." School Library Journal says: "Young pirate fanatics will appreciate the interesting information provided but will also find the illustrations riveting. Manders captures all the grit and ferocity of ill-kempt, surly ne'er-do-wells while also offering many visual details of ships, chests of gold, and weaponry. One particularly humorous page tells viewers that 'M is for Movie Pirates,' showing all the famous actors who have played pirates seated in a theater looking at readers (today's children will recognize Johnny Depp right away)." Follow the backstory on [John's blog](#).

Kickstarter

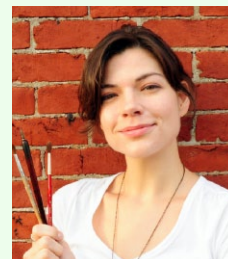
Rhonda Libbey just launched a **Kickstarter project** for Cthulhu Mythos Playing Cards, a Bicycle® custom deck inspired by the short stories of author H.P. Lovecraft, and illustrated by Rhonda. Printed by the United States Playing Card Company, the deck will feature twelve court cards (each representing a beloved Mythos character), a unique Ace, and two special Jokers. There are three different box colors to choose from, each featuring a painting from the expressionist series "Cthulhu Dreaming" in Blue, Green or Purple.



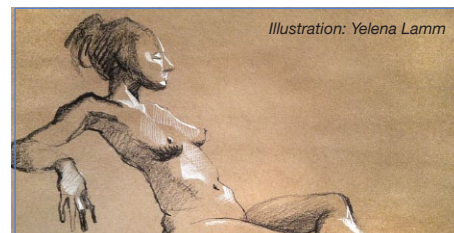
New Member

Emily Traynor, Pittsburgh
emilytraynor@gmail.com
www.emilytraynor.com

Emily's familial roots are historically tied to Pittsburgh, where she moved to pursue a BA in Studio Arts at the University of Pittsburgh, graduating in 2010. Since then she has continued to develop her illustration style and technique, particularly exploring the subtlety of line quality and the unique interactions between ink and watercolor. So far in her career, Emily has primarily focused on editorial work and personal commissions, and is expanding this focus to include an increased display of her work in various art venues.



An article featuring an interview with Emily, discussing her artwork and career as an illustrator, will appear in *Manic! Magazine's* upcoming Women of Power issue, out in September.



Life Drawing at Panza Gallery

Thursdays 6:30-9:30pm \$10

Coffee, pastries & drinks served.
Enter basement gallery on left side of building.

www.panzagallery.com

SAVE 10%*

with FREE Utrecht ArtSmart Card

Utrecht Art Supply

1930 East Carson Street, Southside
412.432.1945
UtrechtArt.com

*Discount can not be combined with any other offer, does not apply to clearance or sale items, Gift cards, BEST BUYS, Furniture, Lighting, and items designated as nondiscountable.

10% OFF

all non-sale items with PSI members card

Artist & Craftsman Supply

5603 Hobart Street, Squirrel Hill
412.421.3002
ArtistCraftsman.com

Social Night: The Oldest PSI Tradition

Making the most of Social night and dispelling common misperceptions

From Fred Carlson/New Member Contact

1. WHY SOCIAL NIGHT? The entire genesis of PSI began by providing the social experience that freelancers miss by working alone so much. PSI Social Nights began in late 1996. Social Night is a constant and serves many purposes, primarily providing the society a monthly anchor to design other programming around. Keeping the social a *regular* monthly appointment keeps communication to an efficient minimum and provides the entire PSI membership the monthly opportunity to get together, similar to the "Stammtisch" or regularly reserved table discussion time popular in the artists' groups in Europe since the Renaissance.

2. I'M NEW TO THE SOCIETY, WHY SHOULD I COME TO SOCIAL NIGHT? New Members sometimes ask me about being intimidated by the idea of coming to PSI Social Night. Anyone who knows the leadership of PSI knows of the giving attitude of the members — remember, the only qualifier in joining PSI as an affiliate or a full member is that you *love* illustration and you want to be a part of an organization where you can grow your creative and professional career tracks in the illustration business. So...*everyone* should come to Social Night! If anything, the newer members get the *most* attention! And bring samples to get feedback on — apart from our program nights where portfolio reviews are included this is the *best* opportunity to get feedback on your work and new directions.

3. I'M ON A BUDGET, CAN I AFFORD TO COME? PSI pays for the food appetizers and pizzas that are ordered between 6:30 and 7pm on Social Nights. All drinks are paid for by members themselves. Church Brew Works is very accommodating to our members who choose just to savor the illustration shop talk while nursing an ice water, coffee or soft drinks, all inexpensive alternatives. Parking is free behind the restaurant and on Liberty Avenue in front. The centralized location keeps mileage costs as equal as possible for everyone who attends.

4. I DON'T LIKE BEING AROUND PEOPLE GETTING BOMBED ON ALCOHOL, SHOULD I WORRY? The PSI crowd is lively but not ignorant, and the focus is on the work and new assignment stories, not on "getting drunk." It's probably about a 50/50 split on an average social night between people who have the fine craft brews, wine or mixed drinks vs. people who choose to drink coffee, waters, or soft drinks.

5. WHAT AM I MISSING BY NOT ATTENDING SOCIALS? PSI members use socials to discuss PSI business, projects, programs, and committee assignments. Our last huge exhibition was moved along by getting together at socials and organizing the category teams for that show. Our theme was brainstormed at socials. Leads and services are exchanged. Hot Line questions are raised and answers given about pricing, legal

issues, and client negotiation and servicing. See the newest marketing ideas from established and new members alike. The inspiration one gets from seeing great work, and the comments and advice one gets at socials is an extended graduate school experience that is priceless. Don't pass it up.

NEXT PSI SOCIAL



**Tuesday, September 9
Beginning at 6:30 pm**

**Church Brew Works,
3525 Liberty Avenue,
Strip District**

**Free parking!
Free appetizers!**

Membership Overview Report

From Fred Carlson/New Member Contact

Thanks to the team that helped with the 2014 dues call-arounds this past month. Board members **Evette Gabriel, Ashley Cecil, Molly Feuer, Ilene Winn-Lederer** and **Kathy Rooney** were joined by former VPs **George Schill** and **John Blumen** and this author to contact 58 members. Member contact is a priority with PSI, to avoid anyone falling through the cracks. We know everyone is busy and appreciate you who stayed in the society by paying 2014 dues.

At the beginning of the effort that began the second week of July, our membership, including all thirteen new members joining so far in 2014, stood at 173 members. The call-rounds reported 41 people staying in and paying, and seventeen members who for various reasons decided not to renew, including four who moved away and a few no longer in the field. A ten percent loss of members is not unusual in a voluntary organization like PSI but we continue to hold our numbers due to new members joining at the same rate. In this economy, we are thankful for this ability to stay on a slow growth trajectory. It also appears, thankfully, that the \$20 dues increase passed overwhelmingly last December was not cited to any of our callers as a reason for anyone dropping membership.

As your new interim Treasurer, I remind everyone that dues are billed annually on January 1 and must be paid by March 1. Please respect our board's volunteer time by responding to the dues notifications in a timely way so we can cut down on time devoted to reminder calls.

SCBWI Fall Conference Update

From Nora Thompson/Regional Illustrator Coordinator

Information about this year's *Western Pennsylvania Society of Children's Book Writers & Illustrators Fall Conference* is available for viewing [online](#). We're making an exciting move to the

Hyatt Regency Pittsburgh National Airport this year. The workshop sessions will be very close to the main ballroom, and we'll have lunch in the space between the rooms. [Registration](#) is now live.

This year we're bringing in Kristen Nobles, an art director from Candlewick and Amy Cherrix, an editor from Houghton Mifflin. Kristen will be running the Illustrator's Intensive Friday evening, November 7, and will also be reviewing and critiquing portfolios one-on-one the following day. Amy will be reviewing and critiquing portfolios as well as picture book dummies. Both of them will be presenting workshops on Saturday. Click through the links on the event page above to read about the workshops, the intensive and all the faculty bios. If you have any questions, please feel free to [email me](#) directly.



Friday, November 7

Intensives: 6:30 pm-9:30 pm

Saturday, November 8

Conference: 8:00 am-6:00 pm

Cost:

Saturday only conference (limited to 200):
Members \$150 Non-members \$175

Friday evening intensives

(limited to 50 writers and 50 illustrators, available for Saturday conference attendees only):
Members \$40, Non-members \$60

Manuscript critique or portfolio review

(available for Saturday conference attendees only): Members only \$50 (space is limited)

Bookmark Challenge Reminder

Free conference tuition for the winner of the [Bookmark Challenge](#)! (Includes Saturday workshops only, does not include the Friday evening intensive or a personal portfolio review.)

Pastel Artists

PSI member **Mary Dunn** suggests that anyone who works in pastels consider signing up with Pittsburgh Pastel Artists League. There is no screening. Their new [website](#) contains more information about membership.

Watercolor Artists

Fall new member screening for the Pittsburgh Watercolor Society will be held in the East Liberty Presbyterian Church, 116 S Highland Ave on September 14, 1-3 pm. Artists must register [online](#) or by phone and submit three works. Acceptance is by two-thirds vote of the Board of Directors. All applicants will receive a notification letter regarding their screening result approximately one week later. Paintings must be framed "exhibit-ready."

Molly Feuer reports on:

July Illustrators Retreat



July brought PSI members our first Illustrators Retreat, a wonderful concept from President **Evette Gabriel**. Eve has done a successful branding campaign for the Choders, whose riverfront property in Highland Park was the perfect place for our event. The unique location is residential, private and beautifully landscaped with koi ponds, a meditation hut, pool, fire pit and much more. Members strolled the grounds in small groups or could wander off to a quiet place on their own. Some took a tour of the docked house boats (available as B&Bs!) and many of us enjoyed watching the hens and rooster scratching around their impressive chicken coop, complete with solar panels.

With an open invitation to use the grounds into the evening (not to mention an invitation into the Choders' home when the rain made an appearance at dusk) the day was relaxing and unhurried with a few scheduled activities for member participation. We had a check-in discussion about the Society's progress and future initiatives with a focus on our new website, its features and implementation schedule. Members expressed their gratitude for the excellent programming leadership has provided during their term, and we celebrated **Fred Carlson's** birthday with a surprise cake around the greenhouse pool. There was discussion over new programming possibilities and a survey of members who are or will be willing to donate their time and talents. We should all be reminded that our shows, events and meetings can only run as smoothly as they do with the effort of volunteers.



Several members brought work to share and participated in one-on-one critiques. The activity was beneficial and very enjoyable to both

reviewers and reviewees, with much interest in scheduling a similar session in the future. Those present agreed that we should all encourage more sharing of artwork at our gatherings by new and established members. It inspires us and feeds our already collaborative atmosphere.

Mark Zingarelli posted on Facebook, "Had a marvelous time and a wonderful experience at yesterday's Pittsburgh Society of Illustrators' retreat at Choderwood, an oasis of peace along the Allegheny River. Great ideas exchanged, wonderful conversations, new faces and simply unbelievable food... all day. An enjoyable collective of Pittsburgh talent and creative energy in one magical spot...I could use a lot more of this in my life."



The quietest moments of our retreat surrounded the lovely model, Tiffany, referred by **Christine Swann's** Life Drawing Sessions at North Hills Art Center. She posed with a serene river view as a backdrop, and about fifteen members spent an hour sitting in chairs in a grassy clearing, re-creating the scene on paper. It was a pleasure to have a professional model in an outdoor setting. Thanks to Vice President **Ashley Cecil**, for making those arrangements! Tiffany can be reached for **modeling inquiries**.

To learn more about booking the Choder's beautiful property for overnight stays, weddings or private parties, visit their listings through **airbnb** and **Hitchburgh**.

I feel compelled to also mention **PerfectPotluck.com**, which came in very handy for members coordinating and recording their contributions to the food, supplies and drink. Nice job everyone!

Next month's BOI:
Friday, September 26

Hosted by **Kathy Rooney**.
Details to come!



Photos by Mark Zingarelli, Yelena Lamm, Ashley Cecil
Illustration by Yelena Lamm

If you'd like to read more about some of the members featured in this issue, look for their interviews and Spotlights in past newsletters, available on PSI's website. Click on a name to open.



Mark Zingarelli



Ilene Winn-Lederer



In addition to myself and our President and Vice President, other members attending were: **Kelly Ackerman**, **Danielle Amiano**, **Micah Benson**, former VP **John Blumen**, **Joel Boyer**, **Jeff Brunner**, former President and New Member Contact **Fred Carlson**, **David Coulson**, **Hannah Garrison**, **Yelena Lamm**, **Pat Lewis**, **Beth O'Neill**, **Vince Ornato**, **Kurt Pfaff**, **Jane Popovich**, **Gary Ritchie**, **Kathy Rooney**, **Carly Schonberg**, **Sean Smith**, **Ilene Winn-Lederer**, **Amanda Zimmerman** and **Mark Zingarelli**.



"We started out with only a script and a voiceover, everything else including style of animation and look was up to us." Jonathan is a fan of old 1940s-1960s animation and had a book titled *Cartoon Modern* as inspiration. He thought of a few jokes and references he wanted to add and started creating the storyboards, to show what visuals would follow along with the voiceover. Jonathan's favorite part is the opening pan in which the main character walks out from behind a tree and starts on his adventure. "That's a reference to how Charlie Brown would walk out of his house and the camera would follow him

*Article by Anni Matsick
Design by Yelena Lamm
Photo courtesy Jonathan Trueblood*



1



2



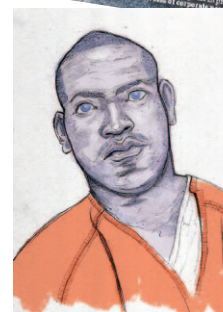
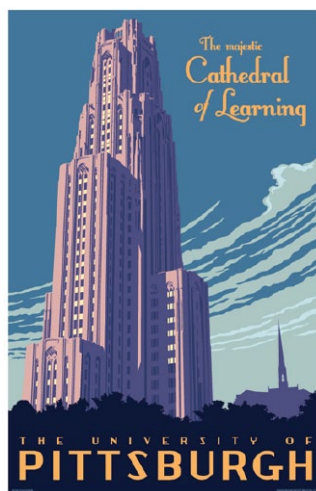
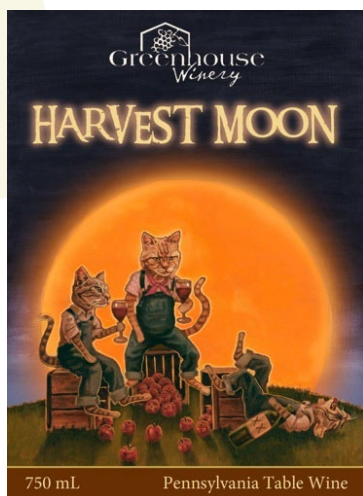
3



4



5



1. **Dan Hart** created this cover illustration for the summer issue of Advantage magazine using various Adobe Creative Suite tools.

2. This cover art by **Pat Lewis** for the Pittsburgh City Paper illustrates an article on the city's "university preparation" program, showing the art and again with text added. Pat sends a layered file so the client can manipulate elements according to their needs. Here, the art director put the logo between the background and the smoke, and also removed the loose papers by the window to make room

for the headline. This also makes it easier to re-use elements of the cover art on the interior pages without going through the time-consuming effort of separating them manually.

3. "Lost at Sea" is from a personal project **Angela Fullard** is working on, about a girl building a raft and exploring the sea. This 10"x14" mixed media piece uses watercolor, oils and Copic marker, altered digitally.

4. **Dave D'Incau Jr.** created a sequential illustration for the August 13-20 weekly issue of Baltimore City Paper

for a cover and feature story on a few suspected criminals accused of identity theft. He also illustrated two of the suspects' mug shots within the story.

5. Shown are two most recent wine labels by **Rick Antolic**. This is the second he has done for Fox Hollow winery, done in colored pencil on paper. "The client found an old-time illustration, which looked rather naive, and loved the look," Rick says. "It looked similar to colored pencil, so I diverged from my usual medium of oils. I learned from Jen Scanlon, an illustration colleague from my CMU days,

that if you underpaint with marker on paper, and then apply colored pencil on top, the white, toothy surface of the paper won't show through. With this technique, and a better treatment of the structure of the fox, I was able to give my illustration a more 'mature' look than what the client showed me, while still retaining an old feel." The cats were done for Greenhouse Winery in Rillton, PA. Rick is working on three more wine labels to complete this holiday series for them.

6. **Jim Zahniser's** latest Pittsburgh theme poster features a familiar site.



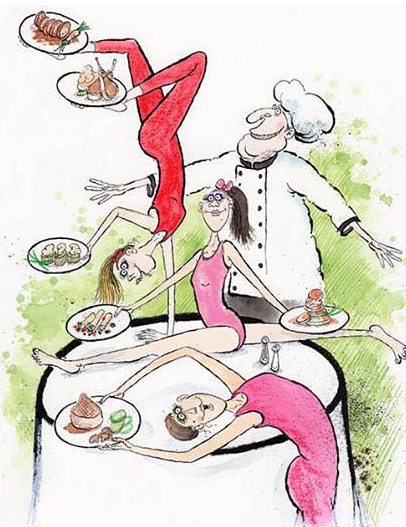
7

ALL SCARLET
BEGONIAS
and a
TOUCH of the Blues

8



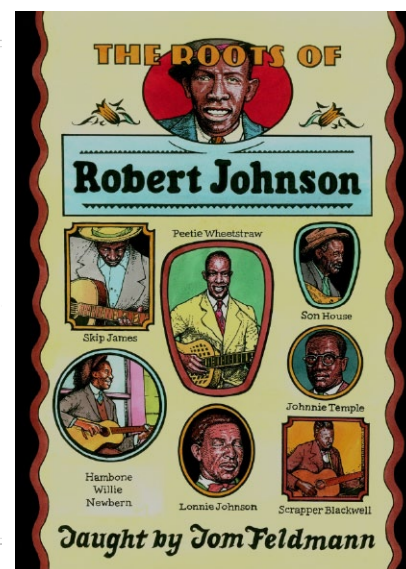
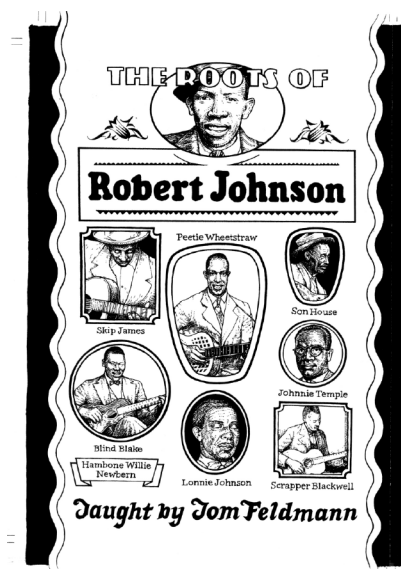
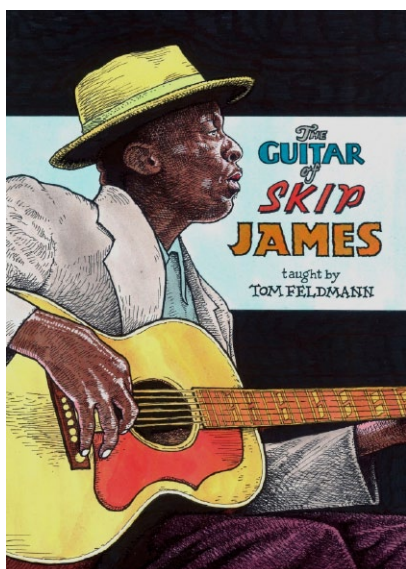
9



10



11



7. New member **Emily Traynor** shares her most recent piece, and a work in progress shot.
8. This little devil was brought to life by **Craig Mrusek** for the current issue of **Bachelor Pad** magazine.
9. **Mark Brewer** created this art for an article on restaurant establish-

- ments competing for the healthiest gymnastic-themed entrees for the Steel City's Taste of the Championships, in the August 20 Pittsburgh Tribune-Review.
10. Mark finished this one recently for the Wall Street Journal to accompany an article about how some men resist going to couples therapy.

11. Two Guitar Workshop covers were commissioned in July from **Fred Carlson**. The Guitar of Skip James went smoothly but another required last minute changes. Shown is the approved b/w drawing for The Roots of Robert Johnson, and the finished color piece that required a "patch" after the Blind Blake sections

had to be removed from the project due to editing lengths on DVD formats. "The producer called me from the UK to tell me the project had to be edited after the b/w art was okayed for finish, and I had to drop Blind Blake from the montage," Fred reports. "I calmly replied, 'Okay, I'll figure something out...'" and the result is here."