



PSINSIDE

www.pittsburghillustrators.org

September, 2008

My Spot *by Anni Matsick*



One of the fun parts of editing the newsletter is receiving all the wonderful images from members each

month and getting acquainted with the names and styles. Since I live in State College, I can't attend a lot of the PSI events. This issue offers some prospects since I can easily stroll on campus to meet the super-powered librarians shown at right. And I can shop right from this issue for Nora's totebag or Ron's teeshirt!

After last issue, Rob Rogers gently pointed out to me that I'd neglected to highlight his name as a PSI member in an article on the mayors cartoon show. I suggested he engrain his name in my mind by sending something for Behind the Brush. He emailed back that he'd have plenty in the near future since he'd be sketching and blogging for the Post Gazette from the Republican and Democratic conventions. (Imagine the duh sound that went off in my head). I consoled myself that living 190 miles outside of the city is a reasonable excuse for not being a regular PG reader. I'll look forward to showing some of Rob's work in a future issue.

Members, I'm dazzled by your accomplishments. Keep it coming. And continue to let me know if I miss anything.

Editor: Anni Matsick
Design/Production: Ron Magnes

All images within this publication are copyrighted by the artists and may not be used without their written permission.

News Flashes From Our Members

Back-to-School Cool

Rich Rogowski created these images for Penn State University, for Part 3 of Librarian Trading Cards, with librarians' alter egos used by them as promotional cards to attract students to library usage. "The librarians were totally stoked to have these, about as much as I was to create them. It's always good to get a project that you enjoy working on, that's when you excel!"

The series is so popular that a Facebook group page was created. Check it out at:
<http://www.new.facebook.com/group.php?gid=21933209550>



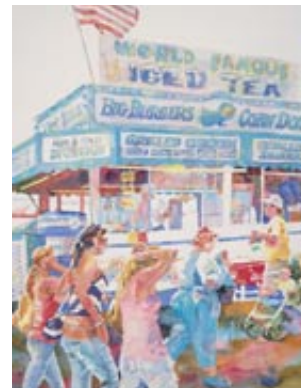
Skydiving Class

Nora Thompson offers a look into the surreal school scene on this canvas totebag offered through CafePress. Get yours at http://www.cafepress.com/nora_thompson.290044185



County Fair

Kit Paulsen's life has shaped her art. Five years ago, the Paulsens moved from Carnegie to a 95 acre farm in Washington County. City scenes were replaced by images of all that living in the country brings – dominated, in this show, by scenes of the county fair. Bella Arte Gallery invites all to take a trip to the country with Kit in her one-woman show opening October 3, 2008 with





a reception from 6 – 9 p.m. at Bella Arte Gallery, 5880 Ellsworth Avenue in Pittsburgh. The show will continue through November 3 with gallery hours Wednesday– Saturday 10 a.m. to 5 p.m. (For more information, contact Bella Arte at 412/362-7200.)

What appeals to Kit is what she hopes will appeal to her viewers – the vibrant juxtaposition of all types of people, the bleats, snorts and clucks of multitudinous animals, the screams and lights of the midway, the demolition derby's fiery crashes and raucous velocity. She



relies on memory and photographs and does heaps of sketches; a B.F.A. in both design and painting has equipped her to compose scenes that make you feel you're there, in your cowboy hat, watching the cars burn.



The Paulsen farm is in the Laurel Highlands, so of course there are some landscapes in the show. Many were painted on location, and all tell a story: the subtle shift in the colors of Autumn after a rain, the way the patterns of the

land change as plows, discers and hoppers furrow, chop and gather; the sparkling glitter the afternoon sun makes on white chickens. "These paintings were huge fun for me to do," says Kit. "I hope they're a pleasure for you to see."

John Manders Returns to Storywalk!

Saturday, September 13, 2008
10:00 a.m. - 1:00 p.m., Frick Park

Ahoy, maties! Back by popular demand, **John Manders** will be reading *Henry and the Buccaneer Bunnies* and painting pictures aboard his own personal pirate ship at the Blue Slide Playground. Storywalk is in Frick Park (Beechwood Blvd. & Nicholson Street entrance).

<http://www.city.pittsburgh.pa.us/Parks/html/storywalk.html>

Some shots from last year:



John with author Carolyn Crimi

Vestalia

Members, friends and family gathered for PSI's annual picnic, Vestalia, under clear skies in a beautiful setting at the **Jen Scanlon** estate in the North Hills



of Pittsburgh. Thanks to Jen for hosting again and to **Michele Bamburak**, new chair of our program committee,



for leading the planning! Abiding with their tradition, members **Phil Wilson** and **Fred Carlson** picked and sang. Other members pictured in the photos include President **Rick Antolic**, **Craig Jennion** and **John Blumen**. New Member **Fred Baxter** made an appearance



after spending the last 16 years in Los Angeles working on such animations as South Park and Jimmy Neutron. Thanks to his friend Victoria Rohleder, visiting from Noosa, Australia, for these photos of the fun.

PRESIDENT'S LETTER



Though they were calling for scattered showers for August 19, PSI hosted our 4th annual summer picnic, Vestalia, under clear blue skies! Jen Scanlon hosted again this year at her home at Tall

Pines Estate. Thanks a million to Jen, our members and their friends who made this year's Vestalia such a pleasant break from the confines of our own studios.

While we're talking pleasantries, I want to say how pleasantly surprised I am at the significantly increased attendance at our social meetings since we've moved them to Redfin Blues on Washington's Landing. It is so great to see such a large number of our members coming out to meet and greet one another. If you haven't made



one of our socials recently, come and check it out. I think you'll be happy you did!

On September 7, our 10th anniversary show, "Pittsburgh Recast," will end its 10 and a half month run. I have asked for a page elsewhere in this newsletter to recap this great achievement for us, but we have other shows to look forward to. PSI will put together a show for West Liberty State University's Nutting Gallery in Wheeling, West Virginia, to be unveiled in March 2009. The show is called "Right Now" and will be a very low impact show to put together. The show will consist of what our members are working on right now. This show will be up for one month, and will consist of approximately 35 pieces.

We agreed to accept an invitation to show here because it would extend our outreach to a new area in which we have not yet been visible.

Our show after "Right Now" is a collaboration with the Pittsburgh Society of Sculptors and the Pittsburgh Poet Society called "Fission of Forms." This will open Labor Day weekend 2009 at the Panza Gallery in Millvale. The members of the Society of Sculptors will create about 30 sculptures. The poets will review the sculptures and write poems about chosen pieces. These poems will then be given to PSI for our members to create illustrations from them (without seeing the original sculpture). The closing of this show will be on Halloween weekend, in the form of a costume party.

If any of our members are interested in being involved in either "Right Now" or "Fission of Forms" or both, please contact Fred Carlson at your earliest convenience.

But before these shows take our time and attention, there is more time for play. PSI will be making another pilgrimage out to the Brandywine River Museum the weekend of October 19-21. If you haven't been there yet, the Brandywine houses one of the greatest collections of American illustrations from its "Golden Age," showcasing original paintings by N.C. Wyeth, Howard Pyle, Maxfield Parrish, Frank Schoonever, Frederick Remington, and much more. The Brandywine also houses many original paintings by Andrew Wyeth. But maybe more important that this, the museum is



just one mile away from the Chadds Ford Winery! And just a 15-minute drive from the Brandywine Museum is the

Delaware Museum of Art, which also houses an incredible collection of golden age American illustration. If you want to travel just a bit more, 2 hours north in the Pocono Mountains, you can find the Frank Frazetta Museum tucked away in the woods. Nearby Stroudsburg offers a nice street with many quaint places to shop and eat. If you are interested in coming along, please let me know so



that I can make sure we all get there. I can promise you, you won't be disappointed you came!



Respectfully submitted,

Rick Antolic
President, PSI

A&C

Artist & Craftsman Supply

Savings on Supplies!

Artist & Craftsman is pleased to announce the extension of their Membership Discount to **PSI!** A&C Supply is a full service art store serving students, and professionals. We carry an extensive inventory, and gladly special order hard to find supplies to best serve your needs. Bring in your PSI Membership Card to receive a 10% discount off non-sale items. We also have bulk discounts and Educators' Discounts.

5603 Hobart Street, Squirrel Hill
(412) 421-3002
www.artistcraftsman.com

Watercolor Excitement

The Pittsburgh Watercolor Society is sponsoring a workshop with internationally-known watercolor artist Linda Doll. She will be in town September 15–19. The workshop runs 9 a.m.–4 p.m. Cost for the week is \$375.00 (a bargain, to study with someone of this caliber.) More on the instructor: www.lindadoll.com. To sign up for workshop contact Sim Cha at schasports@aol.com.

The 62nd annual Pittsburgh Watercolor Society International Aqueous Open Exhibition opens at the Third Street Gallery in Carnegie on Saturday, September 26, with awards at 7 p.m. Juried by Linda Doll, the many entries are from all over the U.S. and abroad.

2008 Western PA SCBWI Annual Conference

The local WPaSCBWI Annual Conference will be held this year on Saturday, November 15 at the Radisson Hotel in Greentree.

New this year is an illustrators gathering the evening before the conference, where they can talk and share portfolios before the program opens.

The speakers for the illustrator breakouts are Tim Gillner, Art Director, Boyds Mills Press and PSI member **Anni Matsick**, freelancer in the children's market.

The registration brochure will be mailed to the membership in mid-September and complete information will be posted on the website at: www.WPaSCBWI.com and on the illustrator's blog: <http://PghPictureBook.WordPress.com>

2008 PSI Scholarship Awards for AIP

The Pittsburgh Society of Illustrators provides scholarship awards to Pittsburgh and surrounding area art students who demonstrate exceptional potential and commitment to become established illustrators. All possible applicants are encouraged to apply but priority is given to support those who are not yet established in their fields and who are undertaking programs of study which will advance their artistic development and who are pursuing career paths that can lead them to become established illustrators.

As of 2005, PSI has established a total amount of \$650 to be given to each of three institutions per year. The amounts can be divided per jurors' discretion except for the Thomas Ruddy Award, donated annually by the artist's widow, which is established at \$250 for each of the three institutions. This award usually represents the top prize and is given to those whose work excels in a figurative style.

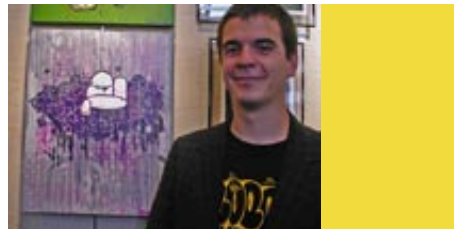
This year's Art Institute of Pittsburgh awards have been awarded to those listed below by jurors **Mark Bender** and **Michael Malle**.

BEST OF SHOW \$150:
Melissa B. Ott / "Faith vs. Love"



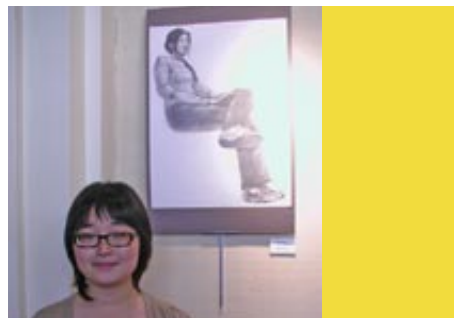
FIRST PLACE \$125:
Andrew Thompson / Untitled

SECOND PLACE \$75:
Devin Soisson / "Throne"



THIRD PLACE \$50:
Ray Oakes / "Robotic Insecticide"

TOM RUDDY AWARD \$250:
Seul-gi Choe / "My Friend"



Two Exciting PSI Exhibitions for 2009.

Interested illustrators, contact Fred Carlson NOW!

PSI has approved two group exhibition commitments for 2009, and we are asking interested illustrators to respond to Exhibition Coordinator Fred Carlson asap to register your interest. Official prospectus with final details will be forthcoming shortly, but it's important that we begin gathering a listing of interested illustrators for planning purposes. We feel both these shows offer the highest in quality presentations and creative challenge for our members with excellent spin-off publicity of our art form a high priority. The spacing of the shows seems to be good timing for anyone wishing to be involved in both, and we are seeking to make these as 'low impact' on the involved members as possible. Fred is very excited to see the list of interested participants. Please email at: fred@carlsonstudio.com or call him (412.856.0982) asap with your interest and official prospectuses will follow for complete details. The sooner the better—space may be an issue to some degree in both shows so the sooner you respond we can reserve your inclusion. Many of our most well-known pros have already made their interest known so the aesthetic quality is anticipated to be of the highest achievement.

Exhibition #1 Right Now!

A Group Presentation of the Newest Work of PSI Members (proposed number of pieces: approximately 35-40 maximum)

History: Gallery Curator Robert Villamagna invited PSI in an email during spring 2007 to Fred Carlson to show a PSI group exhibition at the Nutting Gallery at West Liberty State University, Wheeling, West Virginia. The show proposal was approved by the PSI Board August 2007 at Kathy Rooney's back porch business meeting.

Venue: The Nutting Gallery is a handsome intimate (50' x 25') gallery on the West Liberty State University campus (2600 students) in Wheeling, WV. The show would be promoted via the WLSU PR dept to the public in eastern Ohio, the northern West Virginia area, and Greene and Washington and Beaver counties in PA. Nutting Gallery shows are also promoted to the area colleges (WVU, Franciscan Steubenville, Waynesburg

College, Bethany College, WVU/Wheeling, West VA Tech, Fairmont State U, Glenville State U, etc.) NO COMMISSION on sales (a request that sellers consider contributing a minor percentage to the Nutting Gallery designated fund will be advised but NOT required, as a state institution WLSU cannot charge commissions).

Title: Courtesy of John Ritter--the title of the show is RIGHT NOW! This expresses the immediacy of what PSI members are doing at this point professionally and personally, offering a cross-section to a new audience of what are members do and what their passions are. Works do not have to be published but can be self-promotional as well. Previously shown work is OK, we want what YOU LOVE to show! Selection of work is up to each artist subject to final selection for space considerations by Fred, Robert V, and a committee to be set up. I would like to send Robert at least a couple images in September for his gallery college calendar promotion and website action at WLSU.

Presentation / Opening: We can create a modest gallery signage presentation and artists' labels in addition to the framed works. With the opening set for March 25, 2009, Robert asks me to deliver the work and the signage to him on March 23, 2009. He and his staff to hang per design plans to be set up by Fred/committee. No PSI time or volunteers required to help hang the show. Fred has volunteered to transport the work to Wheeling and back. Final arrangements on show collection TBA--sometime in early March 2009.

Exhibition Timetable: September 2008: delivery of title, theme, some text, some images (from Fred to WLSU). Winter 2008: delivery of specific postcard image and text to Robert. WLSU pays for printing and mailing. We could use overruns for PSI-specific mailing if desired. February 2008: other text and images for web promotions; Fred to collect artists' data and statements. March 23, 2009: Fred to deliver show art in his van with all signage. April 20, 2009: Fred to pick up art from WLSU. Logistics among PSI members in Pittsburgh to be established and communicated by Fred and exhibition volunteers to collect work and return work after show.

Catalogue / Publication: No plans at this time unless PSI wants to document it somehow.

Fundraising / Show Fees: No plans to collect show fees at this time. WLSU pays for opening.

Value for Each Group/organization's

Benefits: This show is a low-impact show presence in a new market we have not exhibited in before. The show fills an exhibition gap between the end of Recast (September 2008) and the collaborative sculpture-poets-illustration show Fission of Forms in September 2009. The show will be cross-promoted to an entirely new set of educational institutions fulfilling an important part of our mission educating all markets about illustration.

PSI Lecture / Workshops: Robert says he can see about funding honoraria for a speaker to come and talk about PSI to a public lecture and gallery tour.

Their studio arts department also can fund some individual workshops and will request a couple members to come and be a part of such an instructional series in the studio arts classrooms as available and make sense.

Please communicate your desire to represent yourself in this group show-of course all styles are desired; computers will be available for animation and web imagery. Contact Fred Carlson/Pittsburgh Society of Illustrators asap please!

Tel: 412.856.0982 / Fax: 412.856.0983
fred@carlsonstudio.com

Exhibition #2 **Fission of Forms**

Collaborative Show between Illustrators, Sculptors, and Poets

A 3-Way Collaboration Between the Society of Sculptors (SOS), Pittsburgh Poetry Exchange (PPE), and the Pittsburgh Society of Illustrators (PSI)

Simply stated, this show, running almost two months in September and October 2009, features a creative flow where first sculptures inspire poetry writing, and then those poems are assigned to illustrators in spring 2009, and finally all three parts (sculpture, poem, and illustration) exhibited in groups together, offers a three-way collaboration worthy of international visibility. An exhibition quality catalogue of highest production value with sales potential is in the planning stages.

Exhibition Team: Michael Leahy (SOS Exhibition Coordinator) and James Shipman (President of SOS), Fred Carlson from PSI and Mark Panza (Owner Panza

Gallery) Other members from PSI anticipated to be added to show committee.

Venue: Mark Panza/PANZA GALLERY, 115 Sedgwick St, Millvale, has generously agreed to host the venue for this collaborative exhibition. www.panzagallery.com When the final 3-way projects are displayed, pieces can be priced collectively and/or individually and Mark's commission policy will apply to any and all sales of sculptures and illustration works. Mark knows many of the SOS and PSI members personally. Mark is a great promoter via print and web and he is very excited about the potential of these talented groups coming together.

Title: "Fission of Forms" was selected from the group from a number of working titles and new ideas. The aspects of creative process: the fission of sculpture work inspiring poetry and then illustrations being inspired by the poems as a 3-way blind creative process stressing evolving perceptions, seemed to convey a particle to particle forward motion, and energy being on everyone's mind it has a timely feel, and the alliteration of the title would appeal to the poets/writers too and creates a marketable show title.

Presentation: With Mark's gallery having a busy community-outreach schedule, we are thinking the works would be wall-based to leave the floor spaces easy to work through during Mark's typical week which includes exercise classes, and figure sessions. James Shipman also said that the sculpture component won't have any gigantic size requirements since they would have to be taken by the poets to their homes in fall 2008 to generate the poetry content, so we expect the sculptures to be wall-mounted or at most smaller pedestals against the walls. The illustrations (some COULD be small 3-d generations) would mostly be wall-hung and framed by the artists to gallery quality standards. All of our different illustrator stylists are encouraged to participate-whatever the media. The poetry would be standardized simple treatments--same type style throughout, of an academic nature.

It looks logistically that the gallery can handle about 20-25 sculptor-poet-illustrator collaborations, so it is imperative for this exhibition that you state your interest ASAP to Fred Carlson. It will be impossible to include participants after February 2009.

Exhibition Timetable: Completed installations (sculptures + poems, mounted + illustrations, framed) to be delivered Wednesday-Friday Sept 2-4, 10 a.m.

to 5 p.m. Opening Night: Saturday, September 5, 2009 6 p.m. to 9 p.m. The show will run until Saturday October 31, 2009 (a nice 7-week run). A closing costume Halloween party is planned 6 p.m.-?? Work would be taken down this night.

Panza Gallery Locus of Events

Event One / Sculptures to Poets: The proposed timeline of the show includes the gathering of the sculpture work with the poets in attendance October 4, 2008, 6 p.m.–9 p.m. at Panza Gallery, where the sculptures would be arranged and juried (selected) by the poets to take home and to begin inspiring the writing.

Event Two / Poems to Illustrators: The 'event night' where the poems would be brought in (screened by identified poets' representative) and selected by draw by the illustrators, again at Panza Gallery, is March 7, 2009 from 6 p.m.–9 p.m. This will give the illustrators about 3 months to create the new works inspired by the poems (sculptures unseen) and document their imagery to be handed off to the program/catalogue production team.

Collaborative three-part finished groups of sculptures/poems/illustrations will be hung the week before September 5, 2009, final date and time TBA.

Catalogue / Publication: James Shipman has spoken with local designer Dale McNutt already about creative direction of a book of quality to be determined by successful underwriting. Timetable will be: the sculptures can be documented early in the project, poems collected early March, and illustration documentation in May-June 2009 for handoff to creative team (Dale, etc). Dale worked with James on earlier collaborative effort with poets and photographers in 1999. Dale is also speaking with publishers about this effort as a commercial vehicle. The scope of the book will be determined by success of foundation grant requests above and beyond modest show fees. Dale is presently designing the final prospectus which will be available to interested illustrators shortly.

Fundraising / Show Fees: Only \$20 per entry range for all sculptors, poets, and illustrators. This would generate around \$1200 to use as a nest egg for the promotion of the exhibition, in-gallery signage, and at least a basic catalogue. The monies could be collected by and paid from by SOS, since it looks like we will use Donna Herron as grant writer per SOS

suggestion. Mark Panza estimates \$600 to go toward postcard production and mailing. Expenses for opening and closing can be split between the three societies.

With the recent successes of PSI and SOS with the Pittsburgh Foundation and Heinz Endowments, both in name recognition with these foundations in obtaining grant monies and the successful track records of their proposed show projects being successfully communicated back to these foundations, we would like to create and implement a grant strategy to support the show catalogue and a desired level of promotional funding and educational/community event scheduling. We will ask each society to advance a minor amount totaling an estimated \$200 per each group for grantwriter Donna Herron's work (this includes all requests and report filings afterwards) to get the requests to the grant committees on time. Grant requests from Donna to the foundations should be delivered by late 3rd quarter 2008 or 4th quarter 2008 to anticipate any successful fundraising being used in mid 2009 for expenses related to show catalogue and exhibition promotion.

Josh Panza will oversee an effective and high visibility web presence for this show through the Panza site, with links to our sites. Dale McNutt and Mark Panza to coordinate on postcard design, promotion, strategy.

Value for Each Group / Organization's Benefits: Like anything else, this collaborative effort and its benefits are being effectively communicated to each society to obtain optimum participation and enthusiastic event planning and promotion. For illustrators the benefits include: sales of originals, catalogue/book samples for promotion usage, creative innovation and challenge, international visibility, and a possible income stream from catalogue sales (there is publisher interest in this project).

Also, the unique aspects of the three-way collaborative effort would be exploited via web (on Mark Panza's site, as well as both societies' sites) with links to all the poets, illustrators, and sculptors professional sites. Besides the buying communities that are normally promoted to by the sculptors and illustrators, the aspects of the poetry community being involved brings in a new demographic to the mix, plus the ongoing community traffic at Panza brings in new buyers as well. The poets' community especially includes a

hefty number of academic and professional buyer possibilities ranging way out past the city.

Other aspects of the financial collaboration on the book/catalogue will be worked out later in the year as grant success is noted; a more ambitious print project may take form as we hear about the grant monies. Independent fundraising outside of Donna Herron's work will be reported transparently to the other involved parties and split completely between expenses relating to the entire show.

Mark Panza can also offer framing services and assistance to illustrators who wish to discuss those special offers with him. Artists can feel free to use their normal framing vendors, of course, and we expect PSI standards for framing quality with the frames enhancing the presentation and value of the artwork. The framing offers from Mark will be publicized to PSI at some point near year-end 2008 as the poetry/illustration handoff event gets near.

The final prospectus for circulation to memberships to be completed by Dale McNutt. Please let Fred know NOW of your interest in this exciting and highly visible exhibition challenge.

Fred reports he has only heard from 11 people for Fission of Forms and 12 for Right Now! so please connect with Fred

ASAP—we just need a working number of illustrators to move ahead. The shows do not collect work until early next March 2009 (Right Now!) and August 2009 (Fission of Forms) but we need to know your interest now!

Welcome, New Member!

Vince Ornato

Referred by Ron Thurston and George Schill, Vince has 25 years in the field and is currently free-lance. His background was originally in writing/rhetoric (Pitt) and he later attended AIP. He has assisted the internationally known artist Daniel Greene as a teaching assistant and has numerous show credits to his name. His work can be seen at: vincetheartist.com and idrawfaces.com

If someone gave you a blank check and no creative parameters, can you imagine a project or illustration related enterprise that might be your artistic legacy?

Rhonda Libbey:

"I certainly could. Though I have many grand ideas that I ponder, some quite frequently. One sounds awful close to the illustration center that we have plans for already... in fact it pretty much is that. I am just amazed and excited that it is a real possibility. It will afford us a public presence and also a place to educate. A real place for us, where we set the pace. A real place where our creative efforts can have a chance to grow.

Over the past two decades many artists here have mentioned that they strongly feel that a new sort of renaissance will one day spring from Pittsburgh. They said that they could feel it like electricity in the air. Perhaps is here and now... and it starts with us."

Leda Miller:

"I started a short historical fiction novel based on facts about my husband's second cousin. He was declared a hero at Niagara Falls where in 1912 he drowned in the ice flow after trying to save a couple's lives. They all perished. They had been out on the ice bridge (which is prohibited now) when it broke apart. Instead of getting off the ice, he chose to try to help the couple. There is a monument in his honor at Niagara Falls. I would spend the grant on researching the era, facts about our cousin, and gaining reference photos for illustrations to be done in oils. It would be aimed at older middle school/younger teens to emphasize the importance of selfless heroic action and taking care of each other, which is what made this country so great."

Taylor Gallery:

"That's an easy question to answer :). My friend and I would finally start our skateboards / snowboard shop and park. The shop would include all skate / snowboard gear, apparel, and anything imaginable to the extreme sports industry. We would specialize in custom skateboards / snowboards...hiring artists (and myself) to create the imagery on the boards. Attached to this shop would be a gallery for artists and designers to expose talent in the surrounding community. The gallery would be open to outside art communities as well to create a buzz of fresh and intelligent inspirations to art. This is the basic idea, and a blank check could make all of these dreams come true :) I of course would still be very active in the illustration community as a freelance artist, because that is my true love :). "

Anne Trimble:

"I would love to someday create a public mural--I've always enjoyed working on sets for theater productions and large backdrops for re-enactment organizations. A large community-oriented piece would be a wonderful challenge for me."

Rich Rogowski:

"To paint a skateboard, and have it destroyed. To design a t-shirt and throw it away."

Fred Carlson:

"It's hard for me to think 'artistic legacy' at age 53 but my CD cover illustrations over the years for such faves as Bill Monroe, Flatt & Scruggs, Doc Watson, Uncle Dave Macon, Blind Willie Johnson, Tony Rice, and Ralph Stanley just make me hungry for more of the same!—and they do pay, too! I guess another artistic dream I've had the past decade is doing a year-long American visual diary of roadside scenes similar to other diners, roadside novelties, animal statues, wild signage, and gas stations I have captured in other assignments and personal work—and having an expense account for such a year-long trip across the country from west to east and north to south would be nice. My wife Nancy wants to come too, I have to add that to the expense logs. Finally, dream assignment--annual report cover for the Fender Guitars company..."

LEX Covato:

"I would buy a building, or better yet a series of buildings that could be turned into a commune of sorts. Many illustrators and artist of all kinds - visual, performance, musical, and literary - could have a space. I feel community is needed because I can feel a real sense of isolation in this field. Classes, gallery space, and a stage could be housed there. Ideally I'd purchase it somewhere in which people could walk, bike, or talk a bus to everything they'd need. If I really had it my way it would also be a healing center!"

Ilene Winn-Lederer:

"My current project, (a collection of Old Testament biblical illustrations nearing publication), can be called my 'dream' project as it has been one I've wanted to do for the past twenty years. It's a long story... :)."

Thanks to Ilene Winn-Lederer for this month's question. Got a good question for an upcoming issue? Please submit to: animatsick@mac.com

A Look at What PSI'ers are Working on This Month

"Is my cigar bothering you?" by **John Ritter** was done for Golf Digest.



John also created this image for a story in Rolling Stone titled "American Warlord," about the American son of a Liberian dictator who went back to Africa to run one of his father's death squad units where he tortured and killed thousands.



This image for a feature in Convenience Store News was sent by **Frank Harris**.



Taylor Callery reports, "This is a book cover that I recently completed for *Warrior Citizen* written by Jeremy Harrison. It is about the aftermath of war...coming home to the states and dealing with America's realities."



"Lately I've been illustrating various flavors for a new GNC brand product line," says **Kurt Pfaff**. "Here's the collection of everything to date."



Fred Carlson recently completed for America Magazine this portrait of the founder of the Sulpician Order of monastics, Fr. Olier, of the 1600s. This piece, like all Fred's work, is executed with Derwent Graphic 2B pencils and watercolor and gouache. Fred also recently completed illustrations of the campuses of Pittsburgh Theological Seminary in the East Liberty section of Pittsburgh and for Waynesburg University. Bradley Brown

Design Group is the design firm for both assignments.



This perky image of "Mr. Moon" is from **Jen Scanlon** who relates that he is the pet of La Dog behavioralist Zack Grey, whose business partner hired her to do the portrait for his birthday. The commission was a result of Jen hanging her artwork in their retail store, Urban Tails, when in LA in May.



This residential portrait of the home of KDKA's Rania Harris was just completed by **Joe Winkler**. It's oil on canvas and measures about 13x19 inches. It will appear in a program for a house tour in late September/early October in Mt. Lebanon that benefits Wesley Spectrum Services, a local non-profit organization. Joe is considering advertising for more of this type of work as a sideline.



Another charming canine commission is this recent one by **Anne Trimble**, portraying a co-worker's cherished puppies.



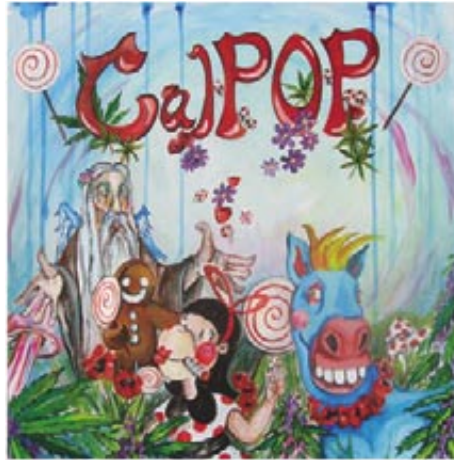
"Learning to use my Wacom tablet...a fun little painting called The Peaceful Tree," says **Rose Gauss**.



Rich Rogowski did the donkey as part of a collaboration with **John Ritter** for a speculative piece for The American Prospect.



LEX Covato sent this sample image of four of fifteen interiors and the cover illustration for a CD coming out this year from an LA band called CalPOP. The job consisted of designing the look of characters that are the subjects in this very bizarre 2-disc progressive rock album.



Nora Thompson has launched a new website featuring her "Rotty" creations. Want more? Go to: <http://www.the-rots.com>, click on "Info" then "Sign up for The Rots newsletter" link.



John Hinderliter sent "Something done quickly in Photoshop on Labor Day morning for a bike magazine."



"Ready for College" is the title for this pastel portrait by **Christine Swann**.



Stephen King didn't see this coming. **Ron Magnes** just finished this Halloween t-shirt image for his shop at <http://www.cafepress.com/magnesgallery>



November 23, 2007 –
September 7, 2008

After a remarkable ten and a half month run at the Heinz History Center, PSI's 10th Anniversary show, Pittsburgh Recast, ends its run this month. We are so grateful to the Heinz History Center who welcomed over 130,000 visitors to this exhibit (and that number does not include the all the city and charter school ninth graders who visited the exhibit as a required field trip).



A few selected comments from the guest book are listed below. It was signed by visitors from the Netherlands, Germany, Scotland, Russia, the Philippines and France, and some comments were written in Spanish, French, German and Chinese.

"Thanks for a great Pittsburgh showcase!"

"Loved the art work—it was the best thing in the museum."

"Rembrandt wouldn't have done one better!"

"You really brought the history of Pittsburgh to life..."

"Great stories, well told. Thanks for sharing them."

"What a tribute to our awesome 'burgh!"

"So glad to see professional illustration celebrated here. What a rich and versatile medium in which to express the essence of Pittsburgh. Great job!"

"Magnificent! The resourcefulness in depicting the history of Pittsburgh thru art is impressive. I'm grateful to those who made this available to the public."

"Bravo! And thank you for the multimedia bridge-building and generational linking. Many of us are very excited about what our area's artists are doing to magnificently illumine the truths of our collective living."

