



Inside

www.pittsburghillustrators.org



This issue:

Member News	p.1
Announcements	p.3
Spotlight	p.6
Behind the Brush	p.7

Editor: Anni Matsick

Reporters:

Rick Antolic
Fred Carlson
Molly Thompson
Autumn Seybert

Design & Production:
Yelena Lamm

Spring Alert

Artwork by **George Schill** is on the cover of the Spring edition of **Pittsburgh Quarterly** magazine. Art director Jennifer McNulty kept the idea on file for several years since George submitted it when he did an earlier cover. It's acrylic on gessoed canvas, tweaked in Photoshop.

Practice, Practice, Practice

Kurt Pfaff shares this gesture drawing done earlier this month at a Thursday evening Life Drawing session at Panza Gallery in Millvale. "One minute to 20-minute poses. Always an educational and humbling experience," Kurt adds.



Backstreet Angle

"Behind the Playground," a 19"x21" painting by **Bill Vrscak**, received The Artist's Magazine/Watercolor Artist Magazine Award with \$1000 in the 148th Annual American Watercolor Society International. Prizes totaling \$40,250 were awarded by awards chair Elaine Daly-Birnbaum, George R. James and Mark E. Mehaffey. The exhibition can be viewed at The Salmagundi Club, 47 Fifth Avenue in New York City, April 6 through 25.



My Spot

Anni Matsick

Who's looking? You may be surprised! Our Spotlight subject tells the story of how a small show led to a big one, on page 6. Numerous others listed in Member News are included in a variety of exhibits, and some, not surprisingly, have won prizes. Spring weather makes it easier to get out

and view what others have spent time creating during the winter months, so make note of the dates and plan some pleasant excursions. Other dates to put on your calendar, for those who want to improve or maintain their drawing skills, are weekly evenings held at local art centers where you can work for several hours at life drawing sessions, for a small fee. Look for details under Announcements. You'll also find a report there on the conclusion of our excellent membership renewal numbers for 2015, which prove you need look no further to discover a dedicated, progressive artists organization, still holding strong as the second largest illustrators group in the nation!

On Exhibit



"Sunshine On My Leghorns Makes Me Happy" by **Kit Paulsen** will be in the *Ron and Kit Paint Stuff* show featuring her work along with that of **Ron Thurston** at the Sewickley Gallery & Frameshop. The opening reception will take place April 10, 6-9 pm and all are invited.



This year was **Linda Barnicott's** 20th to exhibit at Pittsburgh's Home and Garden Show. Her booth with framed images from her Pittsburgh series was set up for the ten day show on "Artist's Row." Several of her original pastels were sold.



Two illustrations by **Stacey Hogue** were accepted for the Butler Institute of American Art's *Area Artists: 77th Annual Show* and one, "Good Things Come in Pears," received an Honorable Mention. The other is titled "Sailing For Home." The exhibit opened February 22 and will run through March 29 at the museum in Youngstown, Ohio.



Out and About

On Saint Patrick's Day, **Vince Ornato** was hired to draw caricatures at Heinz Field at the *American*

Ireland Fund Pittsburgh Gala, hosted by Pat and Dan Rooney. A good time, and good food, fun, music and caricatures was had by all, Vince reports.



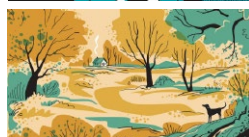
Kudos

Pastel Journal magazine included **Christine Swann's** painting, "Determined," among the winners of the 16th *International Pastel 100 Competition* for the fourth year in a row. The May issue of Southwest Art magazine will feature an interview with Christine in their Artists to Watch column focusing on her history and work in pastels. "Hudson" is a new commission.



Farewell

The handsome and regal canine, Henry, often figuring in **Dave Klug's** playful artwork, crossed over the Rainbow Bridge the morning of March 3. Found through an ad ten years ago in *Pennysaver*, Henry was one of a litter of fifteen, who picked his new family by answering to Dave's whistle. "This little bundle of black and white fur popped out from the group and ran towards me," Dave reminisces. "That's the one, I said." Henry will be sadly missed but oft remembered by all who enjoy Dave's art.



SAVE 20%

on non-sale items with PSI members card

Top Notch Art Center

411 S. Craig Street, Oakland
412.683.4444
TNArtSupply.com

Save instantly with WEB MATCH REBATE*

with FREE Preferred Card

Utrecht Art Supply

1930 East Carson Street, Southside
412.432.1945
UtrechtArt.com

* If our website has a lower delivered price, then a Web Match Rebate will be provided.

BLICK
art materials

Utrecht
Art Supplies

PSI Store Open for Business



Drawing Under the Influence:
An Illustrator's Guide to Mixing Drinks

only \$5

Spiral bound, soft cover, 128 pages. PSI's 2011 Directory featuring 59 illustrated recipes.

Introductions by mixmaster Craig Mrusek, Kathy Rooney and brief history by George Schill. Concept: George Schill & Ron Magnes. Design: Steve Cup

Play Ball!

PSI Illustrated baseball card sets of 12

only
10 sets
left!

\$10/set

Printed originally to promote the 2001 *Play Ball!* show of baseball illustration at AIP.

Illustrators represented in the set of 12: David Biber, Fred Carlson, George Schill, John Manders, Ron Thurston, Larry Tinsley, Greg Valley, Ilene Winn-Lederer, Ilene Finocchi, James Mellett, Kathy Rooney, Lynn Cannoy.

Sales benefit PSI general treasury.

Please contact Fred Carlson
412.856.0982 or fred@carlsonstudio.com

PSI Secretary Molly Thompson reports on:

February BOI Meeting



The February 27 Business of Illustration meeting was held in **Mark Bender's** classroom at the Art Institute of Pittsburgh. This central location is always a treat for members, with a large presentation screen, comfy chairs and fresh student artwork all around. There was much to cover as the very first BOI meeting with new President, **Pat Lewis** and new Vice President, **Amanda Zimmerman**.

Pat Lewis started off our busy meeting with a general schedule of topics to be covered, and we began with **Rhonda Libbey** describing her role as a juror for the awards and scholarships PSI offers to students attending area schools. Volunteering in this capacity is a great way to give back to the young art community and see new Pittsburgh talent developing. Interested members are encouraged to contact Rhonda to receive notifications of future events and ensure that PSI continues to have the availability to accept invitations extended throughout the year.



We then reviewed the financial workings of PSI, from its humble beginnings to our present day growth, with an excellent presentation by Treasurer, **Fred Carlson**. PSI is very much a society built by passionate and team-oriented creatives, and we are social to boot! Most of us already knew that, but



seeing the actual time line of accomplishments and understanding how just a few people could grow to be the second largest illustrators' society in the USA was truly inspiring. If anyone missed this meeting or would like to have a copy of Fred's presentation, contact him directly for this valuable history of our society.

Moving forward, the chairs of our new Programming Committee, **Lisa Rasmussen** and **Danielle Amiano**, shared their tentative schedule for this year's BOI meetings and social events. Their plans reflect the results of our member survey conducted just a few months ago, and we believe the lineup will have something for everyone!

The idea of a mentorship program has come up from

time to time, and now **Mark Zingarelli** and **John Ritter** are exploring a fresh take on the concept. We had some group discussion about how it could be structured to make it meaningful and manageable for our society members, mentors and mentees alike! We look forward to hearing more about this as the plan develops.

Didn't I say we had a lot to cover? The member survey conducted by past President and Vice President **Evette Gabriel** and **Ashley Cecil** gathered a great deal of information. Lucky for us visual types, Ashley was able to output our results as easy-to-read pie charts shared with us on the big screen. Everyone was proud of the positive trend in member feedback, and it allowed us to see valuable stats, such as how members feel about gallery shows, social events, news and programming topics.

We wrapped up the evening with an update on several important topics from Evette and Ashley.



Both are very dedicated to the development of our society's new website design set to roll out this year, and they filled us in on the current time line and some of the much-anticipated perks we'll all enjoy. We discussed members' ideas about how to share our body of knowledge both within the society as well as with the outside world of potential new members and clients. And Evette reminded us that our Basecamp participation is always growing and is an excellent tool for new and archived member discussions. If you have not yet signed up, please reach out to Evette for an invitation to join. It is easy to use and allows each user to control how often they receive updates on new comments and conversations. What a great way to stay informed and involved if you aren't able to attend every meeting.

By now it was well after 10pm, so we chatted our ways down the elevator and out to our cars, as usual. Here's to an inspiring and productive 2015!

Attendees in addition to myself were: President **Pat Lewis**, VP **Amanda Zimmerman**, Treasurer **Fred Carlson**, former VP/Mentorship Team member **John Blumen**, Membership Screening Chair **Kathy Rooney**, Scholarship Chair **Rhonda Libbey**, former President/Web Co-Chair **Evette Gabriel**, former VP/ Web Co-Chair **Ashley Cecil**, Program Committee members **Lisa Rasmussen** and **Danielle Amiano**, Mentorship Chairs **John Ritter** and **Mark Zingarelli** and spouse Kate Zingarelli, former President **Rick Antolic**, members **Mark Bender**, **Kurt Pfaff**, **Joel C. Boyer**, **Vince Ornato**, **Hannah Luoni Garrison*** and affiliate members **Kelly Ackerman** and **Alex Patho Jr.** (Asterisk indicates recent upgrades from affiliate to full membership.)



Photos by Alex Patho Jr.

Next BOI Meeting:

Friday, March 27, 7:30-9:30 pm

PSI is delighted to welcome **Gregg Valley** back into the fold. Join us for a presentation and talk from Gregg spanning the start of his fledgling career in Pittsburgh as a scientific illustrator to large scale installation projects in San Francisco.

Returning Member

Nathan Mazur, Pittsburgh
www.scaredofbees.com

Nathan is an AIP grad and has 17 years in the field as a designer, illustrator, animator, and staff designer. He currently works at RAND Corporation. He was encouraged to rejoin by **Wayno** and **Fred Carlson**. Nathan plays bass and other acoustic and electric instruments, and participated in jams at past Saturnalias.



Upgrade from Affiliate

Danielle Amiano

PSI Secretary Molly Thompson reports on:

March 10 Social Meeting

The March PSI Social at Church Brew Works was attended by 15 members and company, and this one went well past closing time for some of us! As always, the venue was gracious and let us chat away.

Some topics of conversation included mail promotions and online printers, Looney Tunes soundtracks and notable film continuity errors, a lovely pencil portrait of two siblings by **Danielle Amiano**, and some upcoming overseas trips for multiple PSI members.

There was much buzz about the new website and a continuation of our discussion at February's Business of Illustration meeting. Everyone is looking forward to utilizing its user-friendly format to keep their work up-to-date, and members were talking about ways to promote our new makeover. Many remember the national card campaign "Ever Wonder What's Out There?" that was done in 2003 and drew immediate attention to our early website.

The late-stayers gathered along our booth (or was it a pew?) and reminisced about the culture of illustrators and fine art students in our college days, the rapid success of hardworking comic artist Ed Piskor, specialty art conferences like those for gamers and fantasy enthusiasts, and so on until we realized the staff was sweeping up!

Attendees in addition to myself were: President **Pat Lewis**, Treasurer **Fred Carlson**, his daughter Ellen Carlson and fiancée Rob Porter, Mentorship Co-chair **Mark Zingarelli**, his daughter Bella Zingarelli, former VP/Mentorship team member **John Blumen**, Program Committee member **Danielle Amiano***, former President **Rick Antolic**, members **Vince Dorse**, **Vince Ornato**, **Gregg Valley**, **Phil Wilson**, **Hanna Luoni Garrison***, **Sean Smith*** and affiliate member **Autumn Seybert**. (Asterisk indicates recent upgrades from affiliate to full membership.)

A Message from Treasurer Fred Carlson:

Dues Update

Thanks to one and all PSI members, full and affiliate, who have paid their 2015 dues! At press time, seven members have pledged to pay dues within the extended grace period of March 31, ten have opted to not renew, most of them due to moving to other states or relocating at a distance too far to take advantage of benefits and offerings, and seven have not responded. That brings the current membership tally to 155.

If you still have not paid dues when you read this, please reach out to me immediately if you can start a payment plan and stay on as a member. Our new PSI website goes live in the near future. The new website architecture allows each member to manipulate their site images very easily — **now is definitely the time to stay in PSI** and be a part of this new era of the website.

If I or one of our PSI Board phone reps have

If you'd like to read more about some of the members featured in this issue, look for their interviews and Spotlights in past newsletters, available on PSI's website. Click on a name to open.



Vince Ornato



Dave Klug

10% OFF

all non-sale items with PSI members card

Artist & Craftsman Supply

5603 Hobart Street, Squirrel Hill
412.421.3002
ArtistCraftsman.com

NOT heard from you before the end of March, you will be deleted from the member roster and pulled from the website. To rejoin during this year there is a \$25 extra reinstatement fee PLUS your outstanding dues to get back into the website.

Full members owe \$75 and affiliate members owe \$35 unless otherwise specified in the email (some members owe pro-rated amounts depending on when they joined the previous calendar year, and those amounts are clearly specified in each email).

Make sure you print out and sign the membership certificates for 2015 that were attached to the invoice emails. Keep those handy for art supply and conference discounts and admission to PSI programs.

Members have two options to pay dues: Pay by check — make payable to "Pittsburgh Society of Illustrators" (memo 2015 dues) and send to Fred Carlson/PSI Treasurer, 118 Monticello Drive, Monroeville PA 15146; or pay by PayPal off the [home page of the PSI website](#)

If you are a full member and are interested in a one-time Life Benefactor membership of \$500 that will fulfill all future dues for you please contact me directly fred@carlsonstudio.com or 412.856.0982. If you have already paid 2015 dues you can still ask for this option.

DC Trip

Here's who went on the field trip organized by **John Blumen**, advertised in recent PSInside issues! John is shown with Ray Sokolowski, **Danielle Amiano** and **Kathy Rooney** (with the rabbit ears). The foursome met in Washington D.C. for a tour at the National Gallery of Art.



NEXT PSI SOCIAL



Tuesday, March 10
Beginning at 6:30 pm

Church Brew Works*
3525 Liberty Avenue, Strip District
*Featured in the *New York Times*

Free parking! Free appetizers!

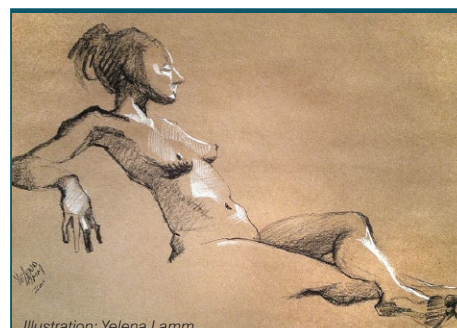


Illustration: Yelena Lamm

Life Drawing at Panza Gallery

Long Pose Monday: Mondays 6-9pm \$10
Life Drawing: Thursdays 6:30-9:30pm \$10

Coffee, pastries & drinks served.
Enter basement gallery on left side of building.
www.panzagallery.com



Illustration: Christine Swann

NHAC Model Sessions

North Hills Art Center

Sundays: April 12, April 26
6-8 pm

\$10 model fee

3432 Babcock Blvd, Pittsburgh

Check for updates at
www.northhillsartcenter.com

Spotlight on... John Ritter

An exhibit of 36 of John's works acquired for Indiana Tech's permanent collection is on view through May 17, the first show in their spectacular new student center's gallery.

"Have you ever wondered if it's worth spending a ton of time, money and logistical effort on an exhibition at a local cafe, bar or small arts organization when you know sales will be meager except for the one small piece that your Aunt Bernice buys because she loves you dearly and wants to humor you?" John asks. "Well, I have, and I pretty much vowed not to go down that path again after multiple experiences over the past two decades."

John lives in Ligonier and fully enjoys being a member of the Latrobe Arts Center & Cafe (LAC), which he describes as "a breath of fresh air in the compact downtown of a post industrial Laurel Highlands setting." Last spring he got a call from LAC's director, Gabrielle Nastuck, asking if he'd do a solo show of about thirty pieces at their cafe/arts space. When asked if they had a budget for framing, production and advertising, she said no. "I used the response prerecorded in my brain for this exact moment; I told her I couldn't afford to take enough time away from current editorial illustration work to do a good job of curating a selection of work and presenting it in a professional manner." "Gaby" told him to bring whatever he had "laying around" the studio and they'd take care of everything else. "She applied more pressure with rhetoric about how good it is for the local community to see creative genius in their backyard. I thought that was such a great line that I burst into laughter," John recalls. It worked, however, and he agreed to deliver unsold work from previous shows and experimental work that had not yet been shown. "Long story short, I dropped off 30+ pieces of framed and unframed art. I even threw in some street art prints that Jacob Thomas and I had created for our **ARKVL** side project in Brooklyn, NY." John arrived at the opening and was impressed by the installation and presentation of the work. "The gallery looked fantastic! The lighting was dead on and my random body of work looked, somehow, cohesive. WOW! It was a nice evening and there was a decent turnout...but nothing sold. NOT so wow."

Four weeks later, John received a phone call

from David Opalinski, an architect and interior design contractor who had seen the show. He requested a studio visit and a date was set. "I gave him the royal tour of my machine shed studio and he asked me for two lump-sum quotes, one for eight large-scale acrylic paintings done in the late 90s, and a single figure for the whole LAC show. I held back from choking and said 'sure!'" John spent three days coming up with numbers that made sense. After four weeks of no communication, David called to say it was a "go" on the complete body of work from the LAC exhibition. It would become part of the Indiana Tech permanent collection and would be featured in the first exhibition in the new student activity center gallery on campus. *A real WOW.*

Held while students were away on break, the opening was well attended by engaged local artists, creative professionals, faculty and staff. John spoke for twenty minutes then relaxed to have a couple of beers and sample the catered hors d'oeuvres. He concludes: "The moral of this story is not lost on me. I am humbled by the experience and very grateful. You never know what connection you are making by putting your work out there in the public eye. This applies to galleries, street art, cafes, rotary club breakfasts, online portfolios, illustration annuals and flea markets! New motto: Whatever it takes, get it out there! You never know who will see it!"

Article by Anni Matsick
Design by Yelena Lamm
Photo of John Ritter by Alex Patho Jr.

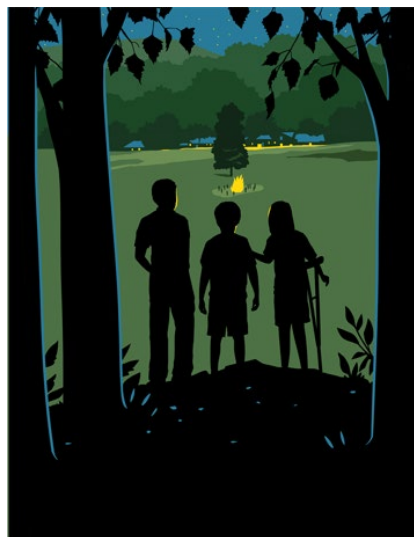




1



5



7



2



3



4



8



6



1. **Ron Thurston** shares this attempt to continue a "done by hand" theme with digitally assembled watercolor scraps. It is a promotional sample, with Winchester Thurston School in mind. (No relation.)

2. **Mark Brewer** finished this piece for an article in the Saturday, March 7 Pittsburgh Tribune-Review about the lessons we learn in frigid winter temperatures.

3. Here's a spot Mark did for Yankee

magazine.

4. This piece was done by Mark for Buffalo Alumni Magazine for an article on Internet addiction.

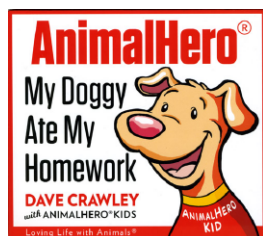
5. **Phil Wilson's** latest painting depicts Quetzalcoatlus, the largest pterosaur known to date, with a wingspan of 39 feet and, if alive today, while sitting, could look a giraffe in the eye! It is shown here raiding a nest of Alamosaurus hatchlings. It is acrylic on illustration board, 18"x24".

6. **Danielle Amiano** completed this 8"x10" portrait for a dear friend to give as a birthday gift. Her brother passed away a couple of years ago and this was her favorite picture of the two of them. It was done using graphite pencils and Prismacolor pencils.

7. Here's poster art by **George Schill** done for a fundraiser for YMCA's Camp Kon-O-Kwee. It also serves as an invitation to help raise funds for the camp's activities. "The art director wanted three kids perched high

above a popular hiking trail called Eagle's Nest overlooking the landmark Council Tree, with a bonfire," George adds. "The AD said it's a tough climb, and the idea was to show kids reaching new heights, no matter the obstacles."

8. **Nora Thompson** shares images for a couple of picture books she's written and will be shopping around. The first one is from *Little Rooster*, and the second one is from *Lucy and the Troll*.



9. **Craig Jennion** shares his most recent YA book cover illustration.

10. "Yes!" is **Judy Emerick's** latest commission, 18"x 24", pastel on paper.

11. Here is one of a series of oil paintings **Kurt Pfaff** has been doing at the Thursday three-hour Life Drawing sessions at Panza Gallery in Millvale.

12. "Demeter" and "Persephone" are 6"x6" modernized portraits of Greek gods done with pen and watercolor by **Emily Trainor**.

13. "Kite" is Emily's newest piece, 6"x9" pen and watercolor. Many of her illustrations on greeting cards will be for sale at Robin's Nest, a local artisan shop on Penn Avenue, by end

of March.

14. **Sarah Miller** completed this tattoo likeness at *United Ink/No Limits Tattoo Expo* held March 20-21 in New York City. Sarah appears in TV coverage of the *Asheville Tattoo Expo* in North Carolina.

15. This new still life painting was done by

Yelena Lamm.

16. **Vince Dorse** did a number of cartoon dog and cat illustrations for a CD of pet poems by local media personality Dave Crawley. Here's the cover and an illustration for "Homework Stew."

17. **Deborah Giancola** created this watercolor for a private commission.