



inside
www.pittsburghillustrators.org



This issue:

Member News	p.1
Announcements	p.5
Features	p.6
Spotlight	p.11
Behind the Brush	p.12

Editor: Anni Matsick

Reporters this issue:
Fred Carlson
Hannah Garrison
Nora Thompson
Emily Traynor

Design & Production:
Yelena Lamm



Water Color

This summery 14"x18" painting by **Kit Paulsen** was commissioned by her veterinarian, third in a series Kit has done of her children and their dogs.



My Spot

Anni Matsick

If you've been hankering for art news, wondering what's been happening since the Winter issue, here's your update — just in time for a great beach read (with lots of art and snapshots)! Slather on the sunscreen, you're in for a pleasant stretch.

It's not just fun and photos. Reports on the monthly Business of Illustration meetings show the valuable information membership provides, on topics ranging from going digital to juggling work and parenting. If you're ready for more, check the list of upcoming programs on page 5. Recaps on the monthly Socials list names of those who are wisely taking advantage of the

Artful Alert

Just-opened at the Frick Environmental Center is **Ashley Cecil's Edged Out: An exhibition of work from an artist residency in herpetology.** Ashley describes it as "...a series of paintings and sculptural works about human influence on nature. The artworks specifically focus on the vulnerable state of amphibians, a modern canary in the coal mine offering us a prophetic glance at what lies ahead for all inhabitants of an ailing environment." The work is based on research conducted by the Richards-Zawacki Herpetology Lab at the University of Pittsburgh, completed during her 6-month residency. Follow updates on her [blog](#).

Art On the Go

This silky faille scarf is wearable art designed and handcrafted by **Yelena Lamm** based on her oil painting, "Poetry." It's one of a very limited edition available in her [Etsy shop](#) and also on her [website](#).



unstructured opportunity to hang out and get acquainted, along with free appetizers. A do-not-miss upcoming event at the home of PSI's 20-years-service award recipient, combining state of the art advice and lots of great food, is described on page 9.

While you're out enjoying the sun, it will be hard to miss a fellow member's six-foot diameter sculpture on display in Pittsburgh's Market Square. It depicts an important environmental message, sanctioned by the city's mayor, covered in the Spotlight on page 11.

Our multi-talented designer is an ace at packing the multitude of submissions into Member News and Behind the Brush each quarterly issue. Thanks to our reporters and to all who shared news on recent work for clients, gallery shows, awards, and more — an impressive collection for all to enjoy. Read on! Just don't get any sand in your laptop.

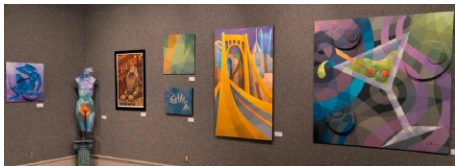
On Exhibit

Keith Bastianini's piece, "An Artist's Idyl," received the People's Choice Award, voted on by visitors to this year's first *Art Nationals* exhibition, held May 19-June 6 at Westmoreland County Community College. The work was also accepted for the Westmoreland Arts and Heritage Festival at Lakemont Park set for July 5-8. The digital piece was composed in Photoshop combining photography and digital painting. **Alex Patho** printed the 22"x30" exhibit piece on Platinum Luster paper. "As with many of my exhibit works, the model is my long-suffering wife and muse, Denise," Keith adds.

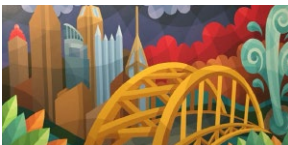


Keith's "Play 'Misty' for me" was accepted into the Pittsburgh Society of Artists exhibit, *Physique: Construction of the Human Form*, a figurative themed show at Panza Gallery in Millvale running June 9-29. The exhibit showcases works depicting the human figure in any style,

ranging from realistic to abstraction. Keith's is a digital work measuring 16"x20", featuring his take on a vampire femme fatale.



A one-man show hosted by **Gregg Valley** opened with a reception on May 11 at Penn State New Kensington. *Facets of my Life* showcased never before seen paintings as well as prints of what Gregg calls "faceting." He used this style to create monumental works up to 5 stories high. Works in the show ranged from 16"x20" panels to 7'x3' canvases. "Ft. Duquesne," a 60"x30"



acrylic on canvas, made its debut. PSI friends **Kurt Pfaff**, Megan Kelly, **John Blumen**, **Ron Blumen**, **Frances Halley**, **Rhonda Libbey** and **George Schill** dropped in to share the evening. Photos by **Alex Patho Jr.** Read coverage by **TribLive**.

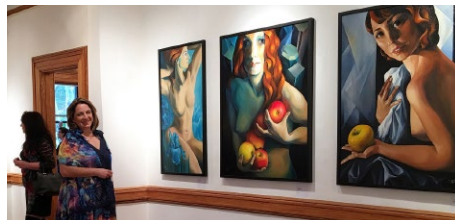


"Shades of Bright," a show combining artwork by **Yelena Lamm** and Joy Knepp, held an opening reception on Saturday, May 12 at Laurel Arts in Somerset. Among those attending were PSI friends

John Blumen, **Molly Thompson** and **Judy Emerick**. The exhibit ran through June 4.



Yelena had five paintings exhibited as part of a group show at the Museum of Russian Art (MoRA) in Jersey City, NJ, May 6-19.



Kit Paulsen, **Ron Thurston** and **Bill Vrscak** combined their work for *Trio*, a show at Sewickley Gallery & Frame Shop. It ran April 27 through May 19. Kit's painting of Sandy Creek Marsh is one of the many that were on display.



Janet Carlisle exhibited her illustrations and collages at the Johnstown Bottleworks March 19 - April 9. The photo of Janet was taken at the press preview for a show she participated in, *Four*



Artists Walk into a Church. It was on display at the Carpatho Rusyn Center in Munhall, April 20 - May 19.

Anni Matsick's watercolor painting "Girl With Pink Ribbon" (15"x12") is included in the 2018 *Pennsylvania Art of the State* exhibit to run June 24-Sept 9 at the State Museum in Harrisburg. A panel of 3 jurors chose 103 works by 99 artists from 1,850 entries. An Opening Reception was held June 24. It will close with free admission on Sunday, September 9, during the *30th Annual Harrisburg Gallery Walk*. More about it [here](#).



Anni's 8"x11" watercolor, "Morning," is included among the 63 works chosen by juror Scott Dimond for the *Regional Juried Exhibition*

2018 hosted at The Gallery at Penn College in Williamsport. The show opened with a reception June 3 and will run through July 27.

This was Anni's 14th year as chair for the Art Alliance of Central Pennsylvania's (AAPC) annual *Recycled Art Show*. The theme was "Green is the New Black." Anni's entry, "Reflecting," was made of foil seals from yogurt containers and shredded credit cards. The show ran during April at the AAPC's Downtown Gallery in State College, then selected pieces were displayed at the Centre County Recycling Center in May.



Here's one of **Cindy Mayer-Strosser's** entries into this year's National Aviary Show. "Night Visitors" is a reverse glass painting

done with 2 layers of glass and a background layer. The *Wings and Wildlife Show* at the Aviary will open with an opening reception on Friday November 2 and continue through November 4.

"Tara (Clouds)" was part of *Discovery*, a show of work by **Sonja Sweterlitsch**, which opened May 29 and ran May 29-June 29 at Boxheart Gallery. A reception was held June 9.





New Member **Lorrie Anne Minicozzi's** "Bunny Costume" was recently on display at the Pittsburgh Symphony's *Art Tour 2018*. The 19"x23" graphite on bristol portrait commission will be delivered to a client after it hangs in the Pittsburgh Society

of Artists Artist's Choice show at the Brew House Association July 5-August 3.

Vince Ornato

set up a booth in Gateway Center for this year's Three Rivers Arts Festival, featuring his Pittsburgh Paintings and prints. Photo: Joe Riebling



Yelena Lamm was captured in front of her booth at the Three Rivers Arts Festival by her friend Sasha Phillips.



"Carrie Furnace 2" by **June Edwards** is a 25"x31.5" archival digital print, ink and watercolor on paper and board is on display in *What You See*, May 29 through August 2

at the Hoyt Center for the Arts in New Castle. A trio of artists including June, Susan Krause and Barbara Westman exhibit three distinct bodies of work which explore materials, textures and structures to challenge what you see. Details [here](#).

Kudos

This image by **Taylor Gallery** done for a series of illustrations in Chicago magazine was chosen for *American Illustration 37*.



Ilene Winn-Lederer's

illustration for her original folktale, *The Odds Of March*, written and first published in 1997 for The Pittsburgh Tribune-Review (Focus Magazine) received an Award of Excellence from *The Creative Quarterly/The Journal of Art & Design* No. 49-50/2017-2018 (pp 68-69). The folktale may be read at Ilene's [blog](#), *Imaginarium*.



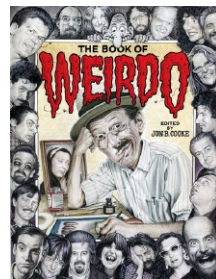
Vince Dorse's online comic,

Untold Tales of Bigfoot, was nominated a third time for the National Cartoon Society's annual Reuben Award in the category of Best Online Comic Long Form. The series took home the prize in 2012. No win this time but the ceremony was another chance to don the tux.



Books

This cover preview is for the upcoming Weirdo retrospective book, *The Book of Weirdo*. Cover art is by Drew Friedman, with lettering by **David Coulson**. **Mark Zingarelli** is in the top right, along with a host of Weirdo contributors. It will be published by Ron Turner's Last Gasp in late 2018.

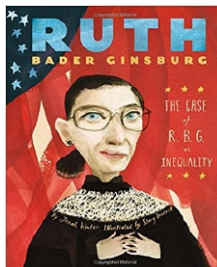


Janet Carlisle

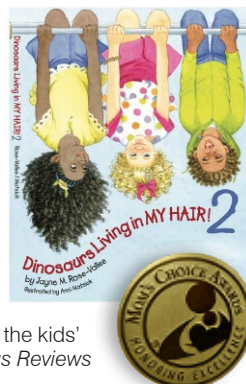
took part in the *Johnstown Bottleworks Children's Book Festival*, April 7-8 where she sold her book, *Birds of a Feather*.



Ruth Bader Ginsburg, written by Jonah Winter and illustrated by **Stacy Innerst**, has received a Gold Parents' Choice Award. The Parents' Choice Foundation, established in 1978, is the nation's oldest nonprofit guide to quality children's media and toys.



Dinosaurs Living In My Hair 2, a picture book sequel written by Jayne Rose-Vallee and illustrated by **Anni Matsick**, received a Mom's Choice Gold Award. The program is globally recognized for establishing the benchmark of excellence in family-friendly media, products and services. "... Matsick's watercolor illustrations of this group of friends are a delightful celebration of diversity... the children are as distinct as their dinosaurs, and the riot of colors is as vibrant as the kids' imaginations." — *Kirkus Reviews*



This spread is from *My Little Lovebug*, a customizable picture book illustrated by new member



Jeanine Murch for I See Me! Books, published in January 2018. Line work for the image and lettering were all inked by hand, then color and custom textures added in Photoshop.

Here's a dramatic scene from *Watch Out! Snapshots*, a single issue graphic novel about the characters in *Watch Out!* books 1 and 2, written by Kathryn Jones and illustrated by new affiliate member

Gabrielle Burke.

She draws and inks the pages by hand and colors the art digitally. The project began as a successful Kickstarter. The books will be available soon on her [website](#).



Out and About



The mission of the Pittsburgh Society of Illustrators includes promoting the art form to the next generation of practitioners. In that tradition, **Fred Carlson** spoke on April 19 about careers and working in the illustration field to the South Fayette schools National Honor Society Art Club. **Diane Garbus Lally** (a former student from Fred's CMU illustration class of 1982) manages the group in a school district that continues to provide generous funding for the arts. On the walls were works by **Mark Bender**, and Fred's Beatles poster, "12 Song Titles." Another former PSI President, **Mark Brewer**, spoke to the group within a 2-week period. Photo: Diane Lally

Vince Ornato spent a day drawing caricatures at Children's Hospital. During an "Art Day" set up for the kids, Vince was asked to draw about a dozen who were restricted to their rooms for various reasons. In some cases, Vince had to wear the hospital gown and gloves. "I wish everyone could see the smile when I showed each child the drawing after I finished!" Vince was hired by **Kory Antonacci**, a musician who attended Duquesne and works in a music therapy capacity while also organizing events for the children.





Free Comic Book Day on May 5 found **Vince Dorse** and Bigfoot all set for sales at Phantom of the Attic, Oakland.



This painting by **Ron Thurston** shows the original cabins at Touchstone Center for Crafts where he will be teaching an all-levels watercolor workshop the week of July 9. There are around 21 cabins plus

modern dormitories and an excellent meals package. Other creative disciplines will be going on the same week and all summer. Complete info [here](#).

Worthy Causes



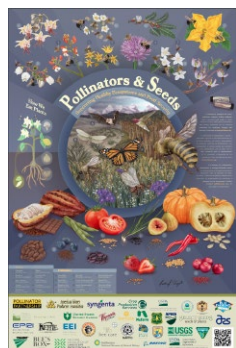
EJ Luden is working on this poster for *TributeFestPgh 9*, 4 nights of local musicians joining forces to dress up in character and perform as their favorite bands to raise money for Humane Animal Rescue. The event will have 33 bands over 4 nights in October.



This 3'x3' piece by **Taylor Gallery** was up for auction on June 21 at The 3rd Annual Women's Leadership Conference in Pittsburgh. All proceeds benefit and support the Alexis Joy D'Achille Foundation for Postpartum

Depression. "Uncertainty 2" is a silkscreen, aerosol, stencil, acrylic, and collage on cradled wood panel. Taylor and his wife, Sara Parker Callery, an instrumental contributor to the event, collaborated on the project. Info [here](#).

Taylor contributed this logo design to The Suicide Rebellion, a small non-profit start up in Pittsburgh established in memory of Garrett Sinatra.



Lindsay Wright created this poster for the Pollinator Partnership earlier this year. It is about pollinators and seeds, rendered digitally, and is for sale here with all profits going to help pollinators.

New Members

Larry Klukaszewski

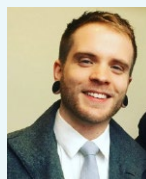
Lower Burrell
www.larryklu.com

Larry "Klu" is so proud to have joined the ranks of the talented artists at PSI. Larry is an art teacher with Kiski Area School District and has been successfully running Larry Klu Sports Art for over 10 years. "Klu" is an NFL licensed sports artist via the Deacon Jones Foundation and also a best-selling author and publisher, having written a children's book about his childhood hero, Rocky Bleier, Rock Solid. He has shown art at two Super Bowls and his work resides on permanent display at Heinz Field. One of his favorite memories is displaying a painting alongside sports art legend Leroy Neiman in Indianapolis at the National Art Museum of Sport. Having played ball at the collegiate level, Larry is proud to convey the pride and passion of sports into his creations. He strives to achieve a strong level of realism while still expressing a painterly quality.



Ed Kuehn, Pittsburgh
edkuehnart.com

Ed is a graphic designer and illustrator. He received a BFA in Communication Design from Kutztown University and began the first 6 years of his career working as an art director for an advertising agency in eastern Pennsylvania. While honing his skills as an art director for various companies and internationally recognized brands, he began to explore narrative art and illustration in his spare time. Focusing on various themes found within the world of sci-fi and fantasy art, he began to develop a uniquely bold digital illustration style that utilizes vibrant color palettes, and detailed line art to capture and engage an audience. Along with providing a multitude of freelance graphic design services, Ed has created album artwork for bands locally and internationally, as well as provided illustrations and various marketing graphics to many different brands and art collectives.



Lorrie Anne Minicozzi
Gibsonia
www.climbingthewalls.net

Lorrie is a professional portrait artist and graphic designer. Working in greatly varied disciplines, from advertising agencies and digital design to mural creation and art education, Lorrie has been exposed to a plethora of art mediums. Even though Lorrie attended SUNY Potsdam and SUNY Stony Brook, she is largely self-taught. In her work, Lorrie loves the drama of bold contrast and craves the control of graphite. She works mainly on commissioned projects and created a not-for-profit mission to provide portraits for families of tragedies. Lorrie has recently moved from Colorado to Pittsburgh, where she teaches and works vigorously daily in her home studio.



Jeanine Murch, Pittsburgh
www.jeaninemurch.com

Jeanine is a freelance illustrator & designer who specializes in whimsical art and hand lettering for children's books, magazines, greeting cards, and advertising.



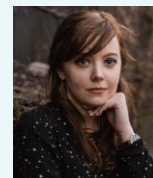
After graduating with a BFA in Illustration from the University of the Arts in Philadelphia, she started her career in NYC in children's publishing. With over a decade of experience as an in-house designer and art director at Penguin Books and Simon & Schuster, she made the jump to full-time freelance illustration in 2013 and returned to her hometown of Pittsburgh 2 years ago. She now works from her home studio in the North Hills with her husband, 2 young children, and the world's most snuggly pup.

New Affiliate Members

Gabrielle Burke

Pittsburgh
sehn.portfoliobox.me

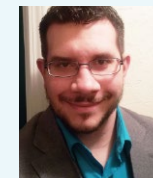
Gabrielle likes using ink and watercolor and people as subject matter. She graduated from Edinboro with a Fine Art degree and is currently pursuing her dream to be a full-time illustrator and comic book artist. Gabrielle has a self-published comic book, "Watch Out," funded by a successful Kickstarter.



Anthony Colaizzi

Pittsburgh
cartoonanth.wixsite.com/colaizzi

Anthony has grown from a freelance graphic designer into a successful design manager with a Pittsburgh area non-profit. Over the years his love of illustration has been constant as he always tries to incorporate it into his work whenever possible. His passion for bold color and expressive lines can be seen in all his work. Recently he has been commissioned as a caricature artist with another non-profit in East Liberty, while continuing to improve his cartooning skills. If not designing or drawing you can find him cooking for friends and family or hanging out with his dog.



Dean Ferraro

Pittsburgh
www.deantferraro.com

Dean is a Pittsburgh-based illustrator and graphic designer. He went to CCAC and studied Graphic Communications and enjoys creating absurd, slice-of-life comics. Some of his influences include Meredith Gran, Chris Ware, Adriane Tomine, Jillian Tamaki, amongst others. He currently works for PA West Soccer and the Children's Museum of Pittsburgh. He has also collaborated with the Looking Glass Art Project, collaborating on the design of at least 5 pieces of public art in Erie.



William O'Meara
Canonsburg
www.omearaart.com

William is an illustrator/graphic artist. His artistic endeavors began at a very young age and continue today. Comfortably working with many different mediums, William has a quirky, humorous and edgy style. He is a 2003 graduate of the Art Institute of Pittsburgh with a Bachelor of Science in Graphic Design.



Fred Carlson reports on...

2018
Treasury & Membership

(Figures good through June 11, 2018)

Income 2018: \$9,106.20

Dues Income through 6/11/2018 represents 93% of expected revenue from dues for 2018

Expenses 2018: \$1,250.02

2018 Net Proceeds or (-) Deficit: + \$7,856.18

PSI Cash-On-Hand: \$17,902.91

(Citizen's Checking \$15,386.81; Citizen's Savings \$2,017.87; PayPal \$498.23)

2018 PSI Dues and Membership

Membership 6.11.2018: 171

Full members 6.11.2018: 135

Affiliate members and affiliate comp members: 34 (29 Affiliate and 6 Affiliate Comp members)

New Members still TBA by screening: 2

Members deleted as of 6.11.2018: 13

PSI New Members 2018: 11

5 Full: Klukaszewski, Kuehn, Callery, Murch, Minicozzi

4 Affiliate: Burke, C. Halley, Ferraro, O'Meara

2 TBA: Brust, Colaizzi

PSI New Member Prospects inquiries last 12 mo: 7

10% OFF

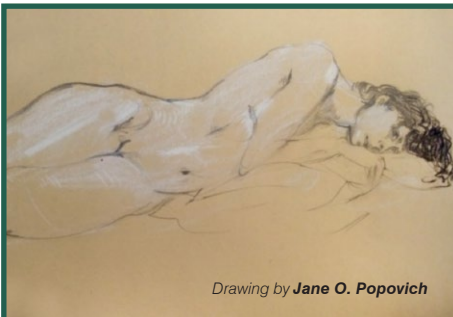
all non-sale items with PSI members card

Artist & Craftsman Supply

5603 Hobart Street, Squirrel Hill

412.421.3002

ArtistCraftsman.com



Drawing by Jane O. Popovich

Life Drawing at Panza Gallery

Long Pose Monday: Mondays 6-9pm \$10

Life Drawing: Thursdays 6:30-9:30pm \$10

Saturday Sessions: Saturdays 10am - 1pm \$10

Coffee, pastries & drinks served.

Enter basement gallery on left side of building.

www.panzagallery.com

Upcoming Thursday
evening Business of
Illustration meetings

Save the dates and watch for details via email!

Programs Available for PSI Members &
New Member Outreach

July 26, 7:30

TBA via email

A Q&A on programs available for PSI members to lead, join, and participate in. Specially crafted for newcomers joining the last couple of years who want to know more about PSI and our benefits. Open to ALL members. Presentations about Mentorship, Programs, Scholarships, future marketing efforts, etc.

ICON 10 Summary & Summer Picnic
August 30, 7:30

Fred Carlson's home, Monroeville

A spacious back patio space will be the location for a pot luck picnic, music, and fire pit after the talk in the house. Fred will show a presentation about the ICON 10 national illustration conference he will attend July 11-14 and the trends and marketing ideas from all over the nation.

Bill Vrscek Watercolor Demo
September 27

Details TBA

Kim Fox Presentation
October 25, 7:30

Details TBA

A report on the June 28 BOI, Going Digital Panel, Part 2, will appear in next issue.

SAVE 20%

on non-sale items with PSI members card

Top Notch Art Center

411 S. Craig Street, Oakland

412.683.4444

TNArtSupply.com

Save instantly with
WEB MATCH REBATE*

with FREE Preferred Card

Blick Art Materials

5534 Walnut St. Pittsburgh PA 15232

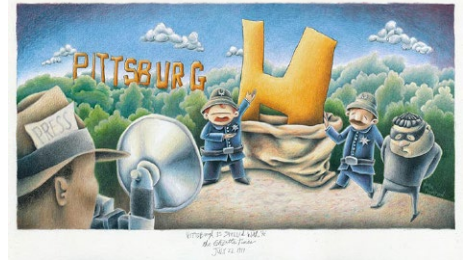
412.432.1945

UtrechtArt.com

* If our website has a lower delivered price, then a Web Match Rebate will be provided.

BLICK
art materialsUtrecht
Art SuppliesPSI Worked For...
Nora Thompson

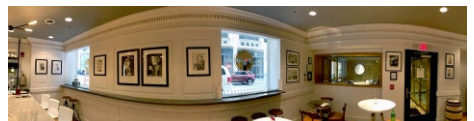
PSI's group exhibit led to a sale and a solo show for Nora. Heinz History Center now has her "Pittsburgh is Spelled With H" drawing from PSI's Art of Facts exhibit in their permanent collection.



Anne Madarasz was planning to propose its purchase when HHC set up their next budget, but her coworkers had another idea. Anne has been at the museum for 26 years (hitting her 25th anniversary sometime around our show), and the curator who called Nora wanted to make the purchase in her honor. She knew how much Anne liked and wanted the piece for their collection, so she and other colleagues decided to buy it for the museum in Anne's name.



Relatedly, Nora had an opening at Wigle Whiskey, *Monster Spirits: Classy Monsters Drinking Whiskey* on April 27, in conjunction with the Pittsburgh Cultural Trust Gallery Crawl. The show is a result of them seeing her Ruddy-Award-winning "Philip Wigle and the Whiskey Rebellion Fire" drawing in PSI's Art of Facts. It's in the Wigle Whiskey Tasting Room and Bottle Shop located in the Omni William Penn Hotel, downtown, until the first week in July. Along with the Philip Wigle drawing, Nora drew and painted 12 additional pieces, including "Audrey," all with charcoal and iron oxide recovered from acid mine runoff.

PSI Worked for...
Lisa Rasmussen

Lisa received a post to teach at Slippery Rock University this spring term on the heels of June Edwards retiring. June had posted a PSI Basecamp notice asking for qualified professors to step up and work through her to get their material in to her department as they were seeking a replacement.

Nora Thompson reports on...

April WPaSCBWI Workshop

The western Pennsylvania region of Society of Children's Book Writers & Illustrators (SCBWI) had a picture book workshop on April 20 and 21 at the Hyatt Pittsburgh International Airport. The workshop revolved around **Stacy Innerst's** Golden Kite award-winning book, *The Music in George's Head*, which he illustrated. The award is given annually by the SCBWI to recognize excellence in children's literature. The book's author, editor, art director, illustrator and Stacy's agent were all present to take participants through the book's conception through its publication. Faculty included **Stacy Innerst** (illustrator), **Suzanne Slade** (author), **Carolyn Yoder** (Senior Editor, Calkins Creek), **Barbara Grzeslo** (Art Director, Boyds Mills Press, Calkins Creek and WordSong), and **Susan Cohen** (Senior Agent, Writers House).

On the evening of the 20th, the entire faculty participated in a panel discussing the book through all its stages of production. On Saturday, the 21st, each faculty member led a breakout

session talking about their role in the publication of the book, along with other books they've worked on and tidbits of advice from years of experience working in the field. Stacy and Suzanne also took some time to sell and sign their books, which were made available through Penguin Bookshop.

Illustrators were invited to display their portfolios, and each participant was able to submit a portfolio, picture book dummy or picture book manuscript for a written critique from one of the faculty prior to the workshop.



Stacy Innerst and Suzanne Slade



Faculty members: (back row) Barbara Grzeslo, Suzanne Slade, Stacy Innerst, (front row) Carolyn Yoder, Susan Cohen



Hannah Garrison reports on...

February BOI: Contracts & Copyright Issues

A panel of PSI members shared real-world examples of their experiences maintaining and preserving their copyrights, as well as their experiences and advice surrounding contracts. **Ilene Winn-Lederer** graciously hosted the event in her home and summarized what ASIP is about (American Society of Illustrators Partnership) and the importance of obtaining copyright protection.

Panelists were **John Manders**, first PSI President and acclaimed children's book illustrator; **Mark Brewer**, fourth PSI President and nationally known cartoonist and book illustrator; **Evette Gabriel**, fifth PSI President, former staff illustrator at the Tribune-Review and current freelance illustrator; **Pat Lewis**, sixth PSI President and humorous illustrator for publications including *Highlights for Children*; **Ilene Winn-Lederer**, PSI ASIP rep-American Society of Illustrators Partnership and long time freelance illustrator.

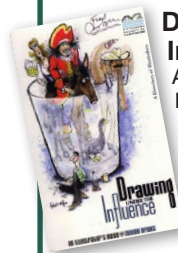
Fred Carlson, former PSI President and current Treasurer, brought reference copies of Pricing and Ethical Guidelines to share at the end of the evening to show the technical and legal background for the panel's case histories.

Attending in addition to the presenters were **Liz Beatty**, **Kat Burema**, **Frances Halley**, **April Hartmann**, **Andrew McAfee**, **Phil Wilson**, and **Lindsay Wright**.

Center photo: PSI panel members (l-r): Mark Brewer, Pat Kelly, Evette Gabriel, John Manders.



PSI Store Open for Business



Drawing Under the Influence:
An Illustrator's Guide to Mixing Drinks

only \$5

Spiral bound, soft cover, 128 pages. PSI's 2011 Directory featuring 59 illustrated recipes. Introductions by mixmaster Craig Mrusek, Kathy Rooney and brief history by George Schill. Concept: George Schill & Ron Magnes. Design: Steve Cup

Sales benefit PSI general treasury.

Please contact Fred Carlson
412.856.0982 or fred@carlsonstudio.com



Check out our members' galleries on PSI's new website!

Click here to like PSI's Facebook page!



Hannah Garrison reports on...

March BOI: How to Juggle Work and Parenting (and Stay Motivated in the Process)

Have you ever wondered how managing a demanding and unpredictable career will align with family life? This month, we've gathered a panel of new and seasoned working parents to share real-world stories on how they manage this delicate balance (or trying to.) It's easy to allow the business of being a creative person take over your day-to-day life, and as the lines between family and work blur you may find the need to revise your approach. Panelists addressing these topics were **Rich Kelly**, **Ashley Cecil**, **Evette Gabriel**, and **Ilene Winn-Lederer**.

The gathering on March 29 was small and cozy in **Rich Kelly's** studio in Verona, so those present enjoyed a fairly intimate and honest talk about freelancing and parenthood.

Ashley and Eve described learning how to compartmentalize their everyday appointments, such as day care and studio time. Everyone agreed that the most important thing learned was how to hustle and, in turn, becoming a more efficient freelance artist. Eve stated her income has doubled since having kids. Rich talked about the importance of checking in with their partner, as mental health quickly becomes an important factor in the family.

Attendees in addition to the host and panelists were Treasurer **Fred Carlson**, Secretary **Hannah Garrison**, former VP **George Schill**, and **Sophia Pappas**.



PSI panel members (l-r): Rich Kelly, Ashley Cecil, Evette Gabriel.



PSI panel members Rich Kelly and Ilene Winn-Lederer.



Emily Traynor reports on...

April BOI: Going Digital, Part 1

The April 26 meeting took place at Assemble, a community space for arts and technology in Garfield. In a 2-part BOI series, PSI members **Taylor Gallery**, **Sophia Pappas**, **Hannah Luoni Garrison**, and **Genevieve Barbee-Turner** led a panel discussion about working in a variety of digital processes. They shared their different approaches to creating digital art in order to decrease the barrier to "going digital." Project descriptions and process shared included a card deck, an editorial illustration based on the season of winter, a book cover for Huckleberry Finn, and textile designs for pillows and clothing. Topics included the software artists use, and how they decide upon certain tech over others, then opened the discussion for questions.

Additional members attending were President **Emily Traynor**, Treasurer **Fred Carlson**, IP Rep **Ilene Winn-Lederer**, **Elizabeth Beatty**, **Kat Bureman**, **Rick Henkel**, **Andy McAfee**, and **Lindsay Wright**.



PSI panel members (l-r): Genevieve Barbee-Turner, Taylor Gallery, Sophia Marie Pappas, Hannah Luoni Garrison.



Fred Carlson reports on...

May BOI: Illustrator Stacy Innerst



PSI member **Frances Halley** and husband John hosted the Last Thursday of the month Business of Illustration meeting on May 31, at their home in the North Hills. The speaker was PSI member **Stacy Innerst** who works out of his Mount Lebanon home. Stacy's book projects have received national attention the past 15 years but his talk would describe a creative journey through many challenging types of illustration markets before the book projects became his staple.

Continued on next page

Stacy's home as he grew up in York, Pennsylvania, had newspaper work (father), librarianship (mother) and painting (older sister) as part of his daily life. Experimentation and encouragement was a daily experience. Stacy attended University of New Mexico for painting. That program had no illustration or graphic component to it, but Stacy had excellent foundational training in drawing, painting and printmaking. Stacy moved on to Saint Louis to attend grad school for journalism and begin work in the newspaper illustration field. He came to Pittsburgh Press in 1990 to join a capable artist bullpen. The paper folded after a strike and Stacy eventually was hired by the Post-Gazette. Despite the pressurized deadlines and hours common to the newspaper market, Stacy described these years as well-managed editorially and the design of the newspaper was held high as a discipline. He also says with many of his assignments he had a lot of time to create excellent images, with 3 or 4 other illustrators in-house to meet the constant demand of the schedule of daily breaking news and editorial content.



Ginsburg, the Beatles, Thomas Jefferson, and George Gershwin. Stacy's latest book on Ruth Bader Ginsburg has received national awards from the New York Times and Stacy appears at the top of his game at this stage of his career. Stacy teaches at LaRoche University to help with the expenses in between book projects, but he also does editorial and other projects to this day--replicating the hectic schedule of those many years working in the newspaper industry.

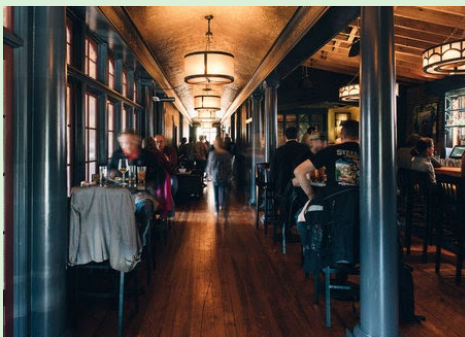
Attendees, in addition to the hosts and speaker, were President **Emily Traynor**, Treasurer and New Member Contact **Fred Carlson**, former VPs **John Blumen** and **David Biber**, **Hilary Schenker**, **Sophia Marie Pappas**, **Jeff Brunner**, **Eric Luden**, **Jeanine Murch**, and **Jane Popovich**. And Lottie the dog, behaving herself. A food and beverage spread was enjoyed by all in Frances' expansive kitchen, and a perfect spring night greeted everyone on the patio social time before and afterward the talk.

Stacy had a stint in Seattle and his first picture book, "M is for Music" came through a California connection. The freedom of the project enabled Stacy to create a series of exciting spreads that many art directors accept now as a standard of process enabling Stacy to "do his thing and have fun." Since that first project, he has illustrated kids' books that fit into historical or fictional history mode including subjects like Ruth Bader



Photos by Fred Carlson.

Social Meetings at The Abbey



EVERY MONTH on the SECOND TUESDAY evening, PSI hosts our social from 6:30-9pm at The Abbey on Butler Street in Lawrenceville. There are 2 parking lots and lots of on-street parking at this location near Allegheny Cemetery. We have a nice segregated riser area past the bar in a comfortable open space, and the service is great! All members should be getting a reminder email from the Board a day or two before the social, but everyone should remember the night is set in stone and should be marked in

advance in your monthly professional calendar! PSI provides the appetizers so you only need pay for your drinks. Lots of time to hang out with colleagues, get feedback on new projects and marketing ideas, share trade talk, and just have fun!

MARK YOUR CALENDARS!

The next Second Tuesday Social will be Tuesday July 10 at The Abbey, with socials following per schedule on August 14, September 11, October 9, and November 13.

Emily Traynor reports on...

April 10 Social

Rick Antolic brought one of his recent oil paintings, subject matter of a snowy Pittsburgh bus on Forbes Avenue in Oakland, to show to the group and we discussed the subject matter, his technique, and plans for further paintings. Otherwise it was general friendly chat; **Molly Thompson** and I discussed the Exhibition Chair position; Gregg talked a bit about the planning for his upcoming show in New Kensington next month, and a few others of us discussed commissions we're currently working on or recently completed. Others in attendance (total 12) were former VP **John Blumen**, **Rhonda Libbey**, **Alex Patho Jr**, **Andrew McAfee**, **Vince Ornato**, **Gregg Valley**, **Phil Wilson**, and **Sophia Pappas** stopped in briefly with her friend April Brust who was applying for membership.

Fred Carlson reports on...

May 8 Social

Spring weather finally broke in as PSI members assembled in force for the May second-Tuesday social night at The Abbey. Topics of discussion included: 1) Ideas for the next generation of PSI website promotion 2) Shop talk about recent

Continued on next page

portrait assignments 3)
Plans for the upcoming
ICON10 National Illustration
Conference coming July
10-14 in Detroit and the
College for Creative Studies

4) The recent panel on
individual approaches to
digital illustration organized
by VP **Genevieve Barbee-
Turner** 5) Promoting **Gregg
Valley's** upcoming *Facets
of My Life* show at Penn
State/New Kensington. More
members picked up the
FREE premiums — **Mike
Fleishman's** *Starting Your
Career as a Freelance*

Illustrator book and the *Drawing Under the
Influence* PSI member Directory. **Fred Carlson**
shared his last 5 jobs in giclee poster form.
Additional attendees this month (19) included:
Secretary **Hannah Luoni Garrison** with fiancée
Pete Cormas and one other friend, Former VPs
John Blumen and **George Schill**, Exhibition
Chairman **Molly Thompson**, ASIP rep **Ilene
Winn-Lederer**, Former President **Rick Antolic**,
Full members **Vince Ornato**, **Phil Wilson**,
Mark Bender, **Frances Halley**, **Sophia Marie
Pappas**, **Gregg Valley** and guest Kevin and his
daughter, new Affiliate members **Colleen Halley**
and **Andrew "Pedro" McAfee**.



Pedro and George (picking up the
tab?)



Gregg, Hannah and Molly



Sophia and Hannah



SRO for Phil, Mark, George and Gregg



Colleen, Ilene and Frances in the reserved table area

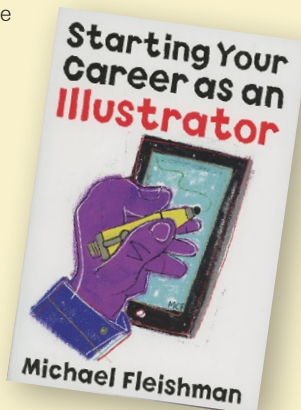
Fred Carlson reports on...

June 12 Social

Conversation circled around newest marketing ideas, members teaching other members new digital techniques, art materials safety concerns, and new assignments that members are working on, all were supplied with appetizers purchased by PSI. Members attending were: former VPs **David Biber**, **George Schill**, and **John Blumen**, Exhibition Chair **Molly Thompson**, Treasurer **Fred Carlson**, **Phil Wilson**, **Sophia Pappas**, **April Brust**, **Andrew McAfee** (and Carnegie Museum art intern Adalia), **Mark Bender**, **Dan Senneway**, and new member prospect Andrew Pappas of Hopewell Twp., a recent Syracuse MFA Illustration grad.

16 FREE BOOKS REMAIN FOR PSI MEMBERS

Michael Fleishman, noted author of the illustration trade, generously donated a large quantity of books in early 2017 to be offered as FREE premiums to PSI members. Over the years, many PSI members have been interviewed and their case studies appear in Mike's books. *Starting Your Career as an Illustrator* is Mike's newest and most complete offering, and the title does not do justice to the career advice and checklists that ALL illustrators should be doing on a routine basis. Only 16 copies are left, all the other titles are gone. You can pick them up at meetings, programs, or arrange to stop by **Fred Carlson's** studio by contacting him at fred@carlsonstudio.com



SAVE THE DATE: AUGUST 30

Another Summer Picnic at Fred Carlson's home in Monroeville!

Revisit the fun-filled event held on Fred's patio last year on page 7 of the **Summer 2017 PSInside!**

See list of upcoming BOIs (p. 5) for a description and watch for an email alert in August with complete details.



PSI Members Sketch at Pittsburgh City Opera

The Pittsburgh CLO premiered their musical comedy, *Up And Away*, in January, and invited members of the Pittsburgh Society of Illustrators to sit in on rehearsals to create some ancillary artwork inspired by the show. *Up And Away* is a musical set in the 1930s about the world's first superhero. It's a small cast of 5 performers that run through quick changes to play over 50 characters.

Vince Dorse did a mock comic book cover with versions of the cast in the roles they inhabit most often. It's one of 2 pieces hung in the small bar/gallery area at the CLO Cabaret Theater from March 14 through the show's run, which ended April 15. Vince did a small print run of these comic cover prints offered for sale at the show as well. The gallery also featured illustrations by **Howard Bender, Fred Carlson, Sophia Pappas, Lisa Rasmussen, Liz Beatty, and Vince Ornato**.



Illustration by Vince Dorse



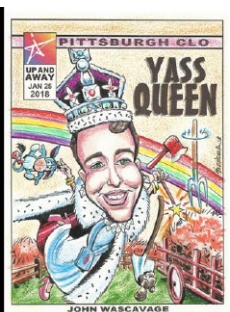
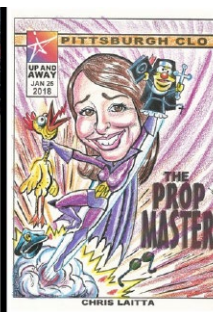
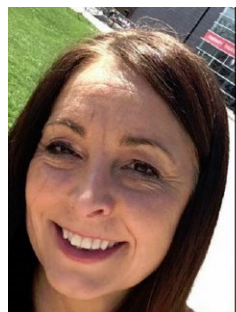
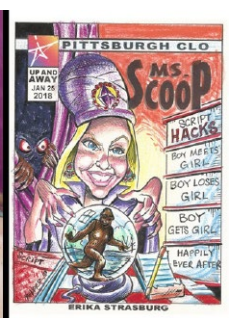
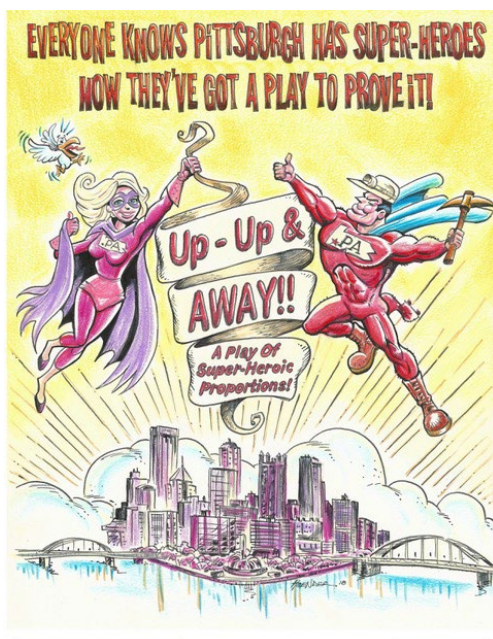
Illustrations by Vince Ornato



View Vince's process post on his illustration [here](#).



Illustrations by Howard Bender



Spotlight on... Lindsay Wright

Casting large-scale insects in her basement was part of this fun-filled venture which utilized Lindsay's latent skills as a sculptor. The illustrator worked in 3D to impact public awareness on how pollinators can help reduce climate change.

Lindsay heard of *Cool Globes: Hot Ideas for a Cooler Planet* through Creatives 4 Climate, a Pittsburgh-based collaborative of artist, designers, architects, climate communicators, scientists and educators. Since its inception in 2007, the project has traveled to 20 cities over 4 continents. In each city, the project leaders select a few local artists' designs for a globe to include in the exhibit. Lindsay is one of 3 local artists who added to the Pittsburgh version, a total of 30 globes on display in Market Square, Gateway Center, PPG Place, and Triangle Park through September. An opening on June 18, covered by the [Pittsburgh Post-Gazette](#), enabled viewers to meet the artists and enjoy free ice cream as they strolled through the Downtown area.

Lindsay, a science illustrator and naturalist, was not optimistic about her chances when submitting, since she had no sculptures in her [online portfolio](#) and had never done a public art project. But a good idea carried her proposal to acceptance. "Bee Mindful" was inspired by the writings of Pittsburgh native Rachel Carson, recognized as one of the first environmentalists. In her artist statement, Lindsay wrote: "Her book, *Silent Spring* (1962), questions modern science's pursuit of control over all natural systems and warns of the dangers of misusing chemical pesticides. We risk our own future by risking the future of pollinators, such as the honey bee. Climate change and man's power over nature has resulted in a decline in many species of pollinators...vital to our food security because one third of all our crops are pollinated, many by the honey bee." During the 6 weeks she had to complete the globe design, Lindsay was in communication with the project leaders who were told by Mayor Bill Peduto to emphasize the Rachel Carson angle. "So, as the idea developed," she recalls, "I painted the main



honeycomb pattern black and gold ('Burgh colors as well as a warning sign in nature) and added part of Carson's quote."

Relying on what she'd learned in sculpture classes taken at Pitt 7-10 years ago, she turned her basement into a studio and decided to, well, wing it! For the clear resin bees, Lindsay made silicone molds. The original plan called for a cluster of bees, complete with wings and antennae. She created a full set then discovered (after trying 6 different glues) that resin parts stick together only with...fresh resin.

By this time, the 6-foot fiberglass globe was dropped off in front of Lindsay's parents' house in Canonsburg. Lindsay needed help to meet the deadline and enlisted her friend, David Dunmire. They worked for 5 days in the driveway, completing

the painting. Getting back to the bees — at this point, only one week remained til deadline, so Lindsay made molds for right and left wing connectors. "Finally, the bees all had wings, and that was all they were getting. So I have a bucket of clear bee legs and antennae for another project."

Holes were drilled in the globe to insert rods that uphold the stars of the piece. Inside them are sculpted representations of foods that would no longer exist if bees became extinct. "And to seal everything, what did I use? More resin!"

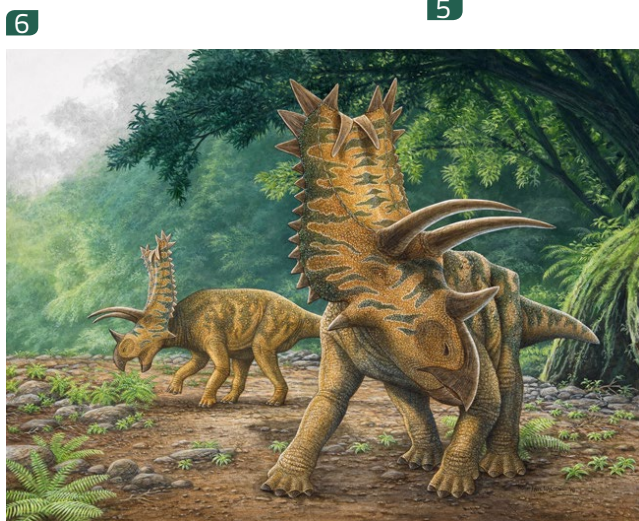
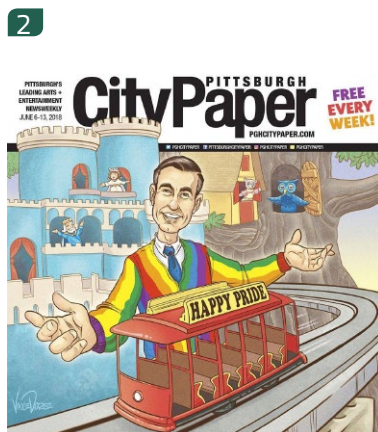
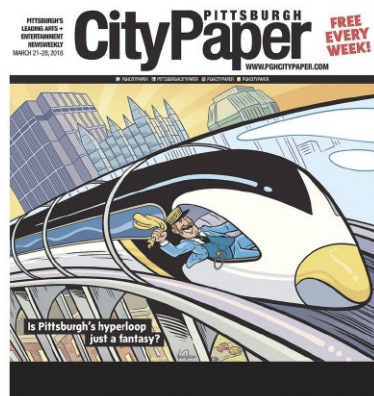
15 bees, complete with wings and food inserts, now fly around the fully-painted globe in Market Square into fall. "As we were installing the globes



and applying the signs to the bases, someone came up to me and said, 'I never thought I would meet a downtown sculpture artist,' and I said, 'Well, I never thought I'd be one!'"



Article: Anni Matsick
Design: Yelena Lamm
Photos: Lindsay Wright



1. **Vince Dorse** did two recent covers for the Pittsburgh City Paper, working with AD Lisa Cunningham. "Used to be, images with lots of long, smooth line work would send me into a panic. But the rulers in Clip Studio Paint make it easy," Vince reports. He tells about that in this [process post](#) on the March 21-28 issue, featuring the proposed Pittsburgh hyperloop.
2. And here's the [process post](#) for the June 6-13 Pride Week issue, showing a different sort of train on a track.
3. "Clemente Bridge" is the latest in

- a series of images based on **Kurt Pfaff's** travels around Pittsburgh. Others include "Raw Oysters" and "Monongahela." All are 24"x 24" and done in oil on canvas.
4. Affiliate member **Helen Fielding**, a student at Liberty University (Lynchburg, VA), recently completed this lion portrait as an independent study project. Helen is majoring in English and minoring in Studio Art at Liberty.
 5. New affiliate member **Ed Kuehn** was commissioned to do this artwork for the cover of the debut album from a

band called Kinzua.

6. Here are the **Phil Wilson's** latest renderings. "Titanoceratops," one of the largest of the horned dinosaurs found so far, with a skull measuring nearly 10 feet long.
7. Phil recently finished and had PSI's photo ace **Alex Patho** shoot this piece which shows a small herd of Centrosaurus on the move. "They were one of a type of ceratopsia or horned dinosaurs that flourished in the late Cretaceous," Phil advises. The piece is 18"x 24" and done in acrylic,

using airbrush for the sky only, the remainder is all hand brush work.

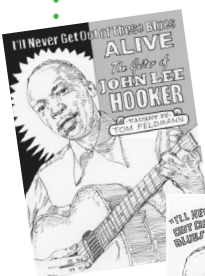
8. "Dracorex," once thought to be a new species, is now believed to be merely the juvenile growth stage of Pachycephalosaurus. Both pieces are 18"x 24", and done in acrylic.
9. This depiction of a herd of mammoths migrating through a mountain pass is done in acrylic and measures 18"x 24".
10. New affiliate member **Dean Ferraro** titled this digital piece "Whole Foods Chain."



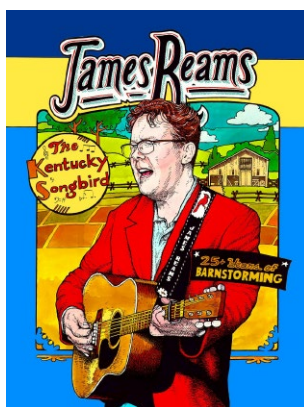
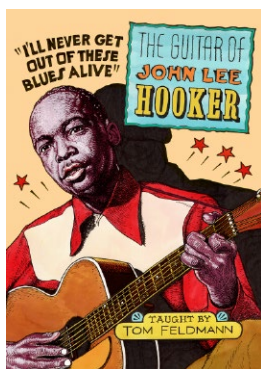
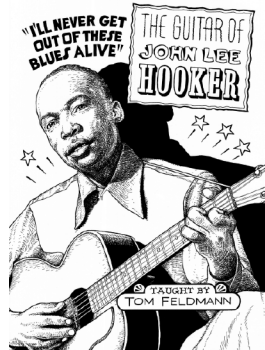
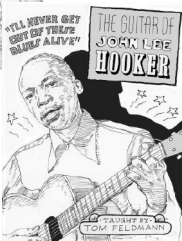
11



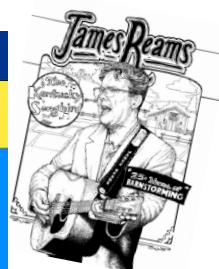
15



14



12

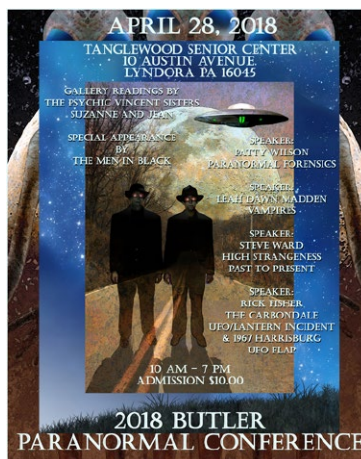


13



16

17



19



11. **Fred Carlson's** Moulin Blues-Ospel poster/t-shirt art got 800 likes the first week it was posted in Holland April 17-24. He was told the artwork is really helping the blues festival visibility this year, the biggest one in Europe.

12. This new illustration was commissioned to celebrate the 25th anniversary of James Reams & the Barnstormers; all lettering and artwork drawn freehand. References included a number of old songbook covers from the 1920s to the 1950s. Fred's work is available [online](#).

13. Fred finished this 24"x20" portrait tribute to Father Joseph Parkes, who founded and is the retiring principal for the Cristo Rey (Christ the King) School in East Harlem, NYC. It was done in Derwent Graphic 2B graphite pencil on 3-ply Strathmore board painted in watercolor, dyes, and gouache.

14. **Fred Carlson** recently completed his latest assignment through AD Stefan Grossman/Sparta NJ for Guitar Workshop, "The Guitar of John Lee Hooker." Two layouts showing different hand lettering treatments are shown first, sent within 3 days of getting the assignment. The direction was OK'd and the tight drawing sent another 3 days later. Finished color art was sent a day and a half later.

15. New affiliate member **Anthony Co-laizzi** submitted this "awesome" alien to the Illustration Friday competition for the "emoji" challenge. It's a good example of the direction his work is developing toward.

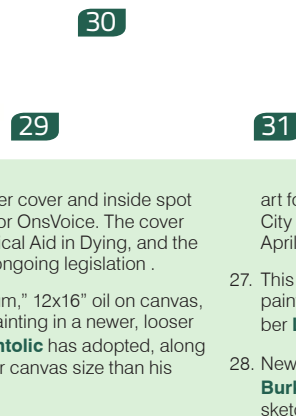
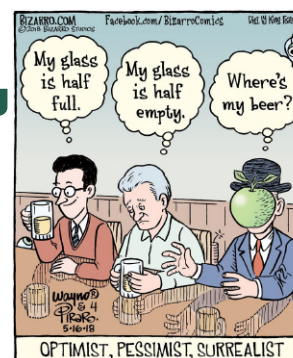
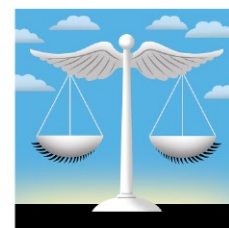
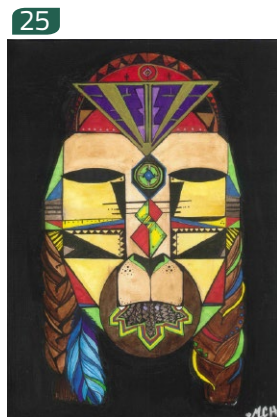
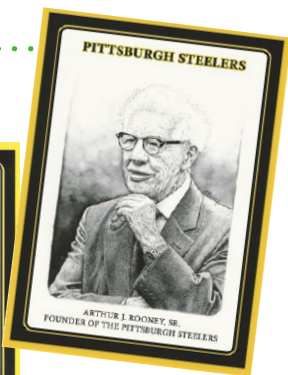
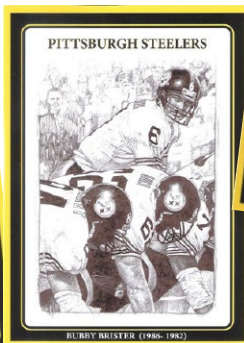
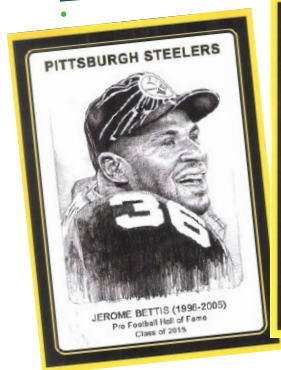
16. Here's a recent editorial illustration by **Jim Prokell**, done for MIR magazine for an article on Branding Leadership.

17. **Andrew McAfee** did this life-

reconstruction of the new Patagonian predator *Tratayenia rosalesi* recently described by a team of scientists including CMNH paleontologist Matt Lamanna, PhD. According to them, *Tratayenia* was a megaraptoran theropod dinosaur from the Upper Cretaceous Bajo de la Carpa Formation of northwestern Patagonia and was probably the apex predator of the region 85 million years ago. Andrew reconstructed the proportions of the animal using the few fossil remains and referring to related Megaraptorans such as *Aerosteon*. "I imagined *Tratayenia* lurking in the shadows around the few shallow water sources of its otherwise dry habitat," he says. "I painted the final composition in Photoshop. I tried to incorporate James Gurney's Windmill Principle to integrate the subject with the background."

18. **Keith Bastianini** had fun putting together a poster for the 2018 *Butler Paranormal Conference* sponsored by two long established regional X-file organizations: the **Butler Organization for Research of the Unexplained** and the **Center for Unexplained Events**. The event was held in April. Keith did some work years ago for a friend's UFO book, *Silent Invasion* by Stan Gordon, that was seen by a number of people in the two organizations who now reach out to him every year to do their graphics.

19. For a 14th year, **Anni Matsick** designed a T-shirt for participants in the Children & Youth Sidewalk Sale of the **Central Pennsylvania Festival of the Arts**. This year's young entrepreneurs will offer their wares on Wednesday, July 11 in downtown State College. The 52nd Arts Fest will be in progress July 12-15.



20. Here is the most recent artwork **Ron Mahoney** created for 3 postcards in a series of Steeler postcards commissioned by Arthur J. Rooney, Jr., showing Jerome Bettis, Bubba Brister and Arthur J. Rooney, Sr. The original drawings are 16"x 20", done in graphite pencil. Mr. Rooney makes postcards and prints of them. He sends out about 57 cards a week to old players, scouts, coaches and friends.

21. **George Schill** did this cover for OnVoice Magazine. The issue covered medications that act like road blocks to certain cancer treatments.

22. Here's another cover and inside spot George did for OnVoice. The cover is titled 'Medical Aid in Dying, and the spot shows ongoing legislation .

23. "The Benedum," 12x16" oil on canvas, is a 7 hour painting in a newer, looser style **Rick Antolic** has adopted, along with a smaller canvas size than his usual work.

24. Here's another painting Rick recently completed, 16"x20" oil on canvas.

25. **Mary Colleen Halley** sent this lion image, 11"x 15", done in marker and watercolor.

26. **Rachel Arnold Sager** did this cover

art for The Animal Issue, Pittsburgh CityPaper's edition for the week of April 4-11.

27. This Jack Lambert jersey was hand-painted with his portrait by new member **Larry "Klu" Klukazewski**.

28. New affiliate member **Gabrielle Burke** shared this page from her sketchbook, done in watercolor.

29. New affiliate member **William O'Meara** sent this recent piece titled "Rose Skull," done digitally.

30. "Night Owl" is a 5"x7" oil and gold leaf painting on panel by **Rhonda**

Libbey.

31. "Loki Among the Loti" is a 5"x7" drawing that will become a painting. Rhonda sends a drawing like this in the mail every month to her patrons, whom she calls Lucid Dreamers. They get access to process videos, print subscription, and other "cool stuff." Find it [here](#).

32. Here's **Wayno's** May 16 collaboration with Dan Pirarro.

33. The process for **Taylor Callery's** "Reflection" (48"x36") included silkscreen, aerosol, house paint, and collage on cradled wood panel.