

inside
www.pittsburghillustrators.org



This issue:

Member News p.1

2013 Report p.5

PSIWorked for... p.6

Spotlight p.6

Behind the Brush p.7

Editor: Anni Matsick

Design & Production:
Yelena Lamm



Cubism

Taylor Gallery's piece for The Washington Post appeared on their Capital Business cover about rearranging defense contracting. Art Director was Madia Brown.

On Track

Kathy Rooney recently finished a North to South view of a campus map for Duquesne University. The new map is a companion to her previously created South to North view of the campus. Kathy adds, "This was a trip of a job, and it took many trips back to forth to The Bluff to get reference photos."



On Exhibit

Kurt Pfaff received a portrait commission through the advertising agency Garrison Hughes for their client Reed Smith, a very large, worldwide lawyers firm with a long history in Pittsburgh. Reed Smith has represented the titans of industry such as Mellon, Carnegie and Frick who helped build Pittsburgh into what it is today. "Dave Hughes asked if I could paint an 'old-school' portrait of managing partner Greg Jordan to honor his achievements in opening markets and greatly expanding the company's growth to all parts of the world," Kurt says. "The deadline was tight so I wasn't sure I could pull it off. I suggested a meeting at the Reed Smith Pittsburgh office to see the portraits they already had in their collection. I wanted to get a sense of what they had in mind, discuss size and maybe where my proposed painting would hang. My heart skipped a beat upon seeing

On Exhibit continued on page 2...



My Spot

Anni Matsick

The issue's fresh design opens another year of fascinating images and news sent by our members. Our accomplishments are impressive, as proven continually in these pages. Last

year's financial report on page 5 encourages us to look forward with optimism. As the year begins, we're in the black and have plans for lots of offerings for members.

All great reasons for you to pay your dues by the March 1 deadline. The membership dues increase for 2014 will go toward improvement of our current website, which is already attracting art buyers. See a report on page 6 on one member contacted for a cover assignment!

Local businesses and firms are hiring our members for corporate portraits in a variety of styles, one being the distinguished oil painting shown on this issue's front page. Spotlited on page 6 is a project that called for a wall-full of portraits in contemporary mode.

Add to these voices by sending in *your* news, and by becoming actively involved in the organization through its committees. If you're new to PSI, plan to attend the next social (every second Tuesday of the month) to get acquainted!

On Exhibit continued from page 1...

there on the walls several magnificent portraits by the great John Singer Sargent. I was excited and intimidated at the same time as I pondered the fact there was less than a month to produce a work of art worthy enough to hang next to arguably the greatest portrait artist and/or painter of the late 1890s to the 1920s."



A presentation ceremony took place on December 12 with managing partner Gary Jordan of Reed Smith saying a few words about his portrait.

The Toonseum asked **Nora Thompson** for a piece to show in their latest exhibit: *Wonder Women: On Page and Off* which explores the role of women as comics creators. From their site: "The exhibit is an exploration of the role of women as artists and in the workplace of the comics industry, and the way women have been portrayed in the art form of comics." [Here's a link](#). The title of her work is "Andy's Mom." The exhibit runs through March 30.



"Princess," an 8x13 watercolor by **Anni Matsick**, is a finalist in *Richeson 75 Small Works 2014*. The show opens with a reception on January 31 in Kimberly, Wisconsin at the Richeson School of Art and Gallery and will hang through March 8. The 2D exhibit features work not exceeding 144 square inches. Finalists will be featured in the exhibition book and their on-line [Virtual Gallery](#).



Kit Paulsen will participate in Art Show at the Century Inn, opening March 21 at the historic Century Inn in Scenery Hill. Shown is her watercolor, "View from the Paretaio Vineyard."



Kudos

This October Pittsburgh City Paper cover with **Rhonda Libbey's** artwork was voted #1 favorite in 2013 by their readers.



Christine Swann was notified by the International Association of Pastel Societies (IAPS) that she is now in the Masters Circle. Christine will receive the 3" 24k gold medallion at their convention in Albuquerque in 2015, which is visited by artists from all over the world.



Christine and her son Braeden, the subject of her award-winning painting on the wall, work side by side in her studio.

Worth Noting

The new **Rebel Ink** magazine cover features Spike TV's Ink Master Season 2 finalist **Sarah Miller**, in stores now.



Out and About

Kit Paulsen and **John Hinderliter** were judges at the **Scholastic Art Competition** at California University of Pennsylvania on January 11.



Kit will present two classes, "The Figure in the Landscape" at the McMurray Art League studio, on February 4 and 11, 10am - 4pm. Details appear on her [website](#). Shown is a small study for "Sprinkler," the larger painting she will be doing as a demo for the February 4 class.



[continued on page 3...](#)

Mark Bender's Digital Illustration students at Art Institute of Pittsburgh created entries for the *Pittsburgh Vintage Grand Prix Poster Competition*, unveiled January 22 during a party at the MINI dealer in Shadyside. Attending were over 150 fans of the motor event and included Chris Lasko of MINI and Dan Delbianco from PVGP.



The winning piece by Sean Proakis will be used for posters, billboards, t-shirts and signage for the event. Nicole Harrison was named People's Choice winner. Richard Woodson's design was chosen for PVGP staff t-shirts. The Pittsburgh Vintage Grand Prix proceeds benefit the Autism Society of Pittsburgh and Allegheny Valley School. "A great cause and the artwork has always been a donation to their efforts," Mark adds. He created posters for the 2003 and 2008 events. Last year's poster was done by **Ron Mahoney**.



Winning designs by Sean Proakis, Richard Woodson and Nicole Harrison, from left to right

If you'd like to read more about some of the members featured in this issue, look for their interviews in past newsletters, available on PSI's website. Click on a name to open.



John Ritter Kurt Pfaff Kathy Rooney Mark Bender

New Affiliate Members

Danielle Amiano, Pittsburgh
dnaartiststudio@gmail.com
www.dnaartiststudio.com

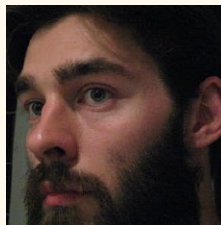
Danielle has been an illustrator for the past two years. She studied graphic design at LaRoche College and went on to work in the design field for six years. "Realizing my talent was better suited for a career in illustration, I left my graphic design job and started my personal illustration business, **DNA artist studio**, in 2011," Danielle says. "Though I am comfortable with many mediums my current focus has been portraits created with graphite or Prismacolor colored pencils on Bristol board." She first heard about PSI from **Phil Wilson**.



Devin Taylor, Pittsburgh
wowillustrations@gmail.com
<http://wowillustrations.wix.com/wowillustrations>

"Creating art is a necessity, an aspect of myself that can not be ignored," Devin states. "Art helps me express my individuality. It is also a way to connect with others, through visuals, as well as giving more insight of who I am as a person."

Last year Devin showed a piece at *Art All Night*, the first time to publicly share his work. He had a few inquiries on the digital illustration and found a buyer. He would like to create more exposure for his work.



15% DISCOUNT

on all dental work
for PSI members without dental insurance

Dr. Jay M. Feuer
Family Dentistry

3035 Washington Road, Suite 3
McMurray, PA 15317

724-941-2200 www.drfeuer.com



Illustration: Yelena Lamm

Life Drawing at Panza Gallery

Thursdays 6:30-9:30pm \$10

Coffee, pastries & drinks served.

Enter basement gallery on left side of building.
http://www.panzagallery.com/Panza_Gallery/Life_Drawing.html

SAVE 20%

on non-sale items with PSI members card

Top Notch Art Center

411 S. Craig Street, Oakland
412.683.4444
TNArtSupply.com

10% OFF

all non-sale items with PSI members card

Artist & Craftsman Supply

5603 Hobart Street, Squirrel Hill
412.421.3002
ArtistCraftsman.com

SAVE 10%*

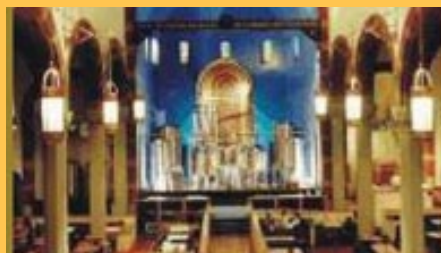
with FREE Utrecht ArtSmart Card

Utrecht Art Supply

1930 East Carson Street, Southside
412.432.1945
UtrechtArt.com

* Discount can not be combined with any other offer, does not apply to clearance or sale items, Gift cards, BEST BUYS, Furniture, Lighting, and items designated as nondiscountable.

NEXT PSI SOCIAL



Tuesday, February 4
Beginning at 6:30 pm

Church Brew Works,
3525 Liberty Avenue, Strip District

Free parking! Free appetizers!

Fred Carlson reports on . . .

Program Opportunity: DRAW2014



Carnegie Mellon University and University of the Arts, London, present a three-day Drawing Symposium with many interesting avenues for illustrators. PSI has been invited to have a couple presentation tables within the DRAWING ARCADE scheduled for Saturday, March 1, 9am-2pm in the Miller Gallery space. We have been invited to share member promos, information on our society, and sell small publications like our *Mixed Drinks Directory* and our baseball card sets.

Over the course of the three days, venues will include Artists Image Resource Gallery, North Side; the Carnegie International at the Museum; and Carnegie Mellon University locations Miller Gallery, Margaret Morrison, Doherty Hall, and CFA. Presentations of interest to PSI members would most likely include: Nicole Eisenman-Purchase Award Carnegie International (presentations Thursday evening at the Museum); Joe Wos-ToonSeum (CFA 310 at 3pm Friday); Rob Rogers-P-G cartoonist (CFA 310 at 3pm Saturday); Doug Cooper-drawing muralist (Margaret Morrison staircase at 3pm Saturday); Jim Duesing-animator (CFA 307 3pm Saturday); and Ed Piskor-comic artist and graphic novelist (Doherty Hall B304 3pm Saturday). Presentations will fill up fast so be sure to [register online](#) FREE asap! The details:

DRAW2014: WHY DRAW NOW?
International Drawing Symposium
February 27 - March 1, 2014
Exploring the expanding field of drawing

OPEN TO THE PUBLIC-Lectures are free and only require pre-registration from the [website](#).

ADVANCE REGISTRATION REQUIRED for all workshops + special events (limited capacity).

Bringing together practitioners from a variety of disciplines, this symposium explores the wide range of processes, materials, and ideas that are expanding the field of drawing today. Immerse yourself in challenging and inspiring artist projects, lectures, presentations, demonstrations, panel discussions, and hands-on workshops.

Workshops exploring everything from silverpoint, generative drawing with code, drawing and social media, botanical illustration, post-Google drawing, drawing as political action, drawing and architecture, comics, drawing as/for theater, and more.

This ambitious program is sponsored by the Heinz Foundation, Fine Foundation, CMU CFA, CMU Masters of Arts Management, Lepper Lecture Fund, and the Jeff Pan Lecture Fund.

SEND QUESTIONS about registration to draw2014cmu@gmail.com

If you are interested in handing out promos of your work at the Drawing Arcade and helping man the PSI tables sometime between 9am and 2pm Saturday, March 1, contact Eve Gabriel (412.488.3636 eve.gabriel.villella@gmail.com), Rick Antolic (412.418.1201 rickantolic@gmail.com), or Fred Carlson (412.856.0982 fred@carlsonstudio.com) **It looks like the time commitment will end in time for you to attend the Saturday afternoon presentations of most interest to illustrators.**

Annual Dues Reminder

PSI membership is due for renewal. Avoid a reinstatement fee and removal of your online portfolio from the PSI website by making a prompt payment.

PSI is pleased to provide two options for renewing your annual dues by **MARCH 1, 2014**

- PayPal assures convenient and secure transactions. Just click the **RENEW MEMBER DUES** link on the PSI website homepage, then select the appropriate BUY NOW button.
- Mail a check or money order for \$75.00 payable to "Pittsburgh Society of Illustrators" to:

Gina Antognoli, Treasurer
Pittsburgh Society of Illustrators
439 Lark Tree Circle
Bridgeville, PA 15017

A \$25 reinstatement fee will be assessed after March 1, 2014

Your renewal payment will keep your membership status active through December 31, 2014. Please note, PSI is no longer printing member cards. Anyone requiring proof of current membership should contact Gina at antognolistudio@gmail.com.

Exhibit Opportunity

Ron Magnes recently met with Judge Kathy Bissoon who oversees a running display of artwork hanging in the lobby of the US District Court for the Western District of PA located at 700 Grant Street, Pittsburgh. Judge Bissoon is always on the lookout for new work to display and asked Ron if anyone in our group would be interested in being added to her list of artists she can draw from. The selection of artwork to be displayed will be totally up to Judge Bissoon and her committee. The artwork usually hangs for about 2-3 months. Ron will be putting together a portfolio of work to pass on to Judge Bissoon for review.

Anyone interested can send Ron up to 4 jpg's of the images you would like to be considered.

Image size:

Each image should be 6" at it's longest dimension and 150 dpi RGB JPG.

- Please put images in a folder labeled with your name and compress before emailing.
- Also include your contact information in a separate file, i.e., TextEdit or Word, which will be added to your page in the portfolio.
- Subject matter is up to you, but keep in mind this is a government building and content is critical.

Send images to: rpmart@mac.com

Three Rivers Arts Festival

Applications for the Artist Market at the Three Rivers Arts Festival are due by February 4. Find the information on their [website page](#).

Fellow member **Anita Alano** passed away in the early morning of January 11, after a long struggle with her health. She joined PSI in the summer of 2009. **Anne Trimble** wrote, "We will all really miss Anita's quick wit, avid participation in anything she could, and her wonderful art." Anita was a member of South Hills Arts League and participated in their shows. She earned a Masters at R.I.T. with a major in painting and taught visual art for many years in the Pittsburgh public schools. A statement in her gallery on the PSI website says, "I love nature and wildlife, especially that of Pennsylvania and New York State. I like to tell a story in my work." Here is one of her verdant landscapes from a past issue, "A Walk in High Summer."

Web Offer

Hosting with 464 Media

| | |
|-------------------------|---------------|
| Domain Hosting - 1 Page | \$125 |
| Great Starting Point | \$275* |
| Self Sufficient Package | \$499* |

*plus \$125 hosting fee

Website | 412.208.4892 | skowalski@464media.com

From Fred Carlson...

2013 Year-End Financial Report

The end of each fiscal year stirs up a flurry of activity throughout the PSI Board of Directors every January. Treasurer **Gina Antognoli** and myself, **Fred Carlson** as Auditor/Tax Filer, finalized our audit for the 2013 year and announced that report to the Board for comment and planning for 2014. This year the Board thought sharing those details here would allow the PSI leadership to emphasize two important points:

1. Your dues are important and desperately needed in a timely way each January.
2. We are frugal, and rely extensively on volunteer help to do the bookkeeping, tax filing, auditing, and program expense and only spend money when absolutely necessary.

The following 2013 summary financial report was reviewed by our Executive Board (**Evette Gabriel** - President, **Ashley Cecil** - Vice President, **Gina Antognoli** - Treasurer, **Molly Feuer** - Secretary), our other Board members (**Ilene Winn-Lederer** - ASIP rep, **Anni Matsick** - PR Director, **Kathy Rooney** - chair of new member screening team), our scholarship chairwoman **Rhonda Libbey**, as well as past officers **Jim Mellett** - Secretary, and **Mark Brewer, Rick Antolic**, and **John Manders**, past Presidents.

Net income 2013

In 2013, PSI had \$7870.31 in all revenue and spent \$4868.89 for a net income of +\$3001.42. This net is the third highest we've ever had as a society, going back to 1998 when we established our treasury. The only other higher revenue years are 2007 (our big PSI Pittsburgh Recast exhibit funding year), when we had a net +\$13,212.37 and 2000 with the Bow Wow Meow fundraiser in conjunction with the Animal Rescue League, when we had a net +\$3689.17.

So 2013 rates the third highest ever, BUT, we were coming from a cash-on-hand position at the end of 2012 that was relatively weak after 2008-2011 deficits so this income is timely and will be a nice buffer as we try new programs and launch the website re-design this year.

Cash-on-hand

As 2013 started, we had balances of \$1649.59 in checking and \$2213.99 in savings for a cash-on-hand total of \$3863.58.

After the 2013 net income, as 2014 begins, we have \$4650.80 in checking and \$2214.20 in savings for a total of \$6865.00. This reconciles exactly with the net income amount of \$3001.42.

Remember, PSI has no other physical assets or brick and mortar space or any paid employees. We also pay each and every bill when it comes in and our books

are balanced each year-end with no payables outstanding. We have no loans or investments.

Art for a Hire Purpose Exhibition



This exhibition helped with our net income amounts. We had \$1460 in revenue from show fees of exhibiting members and other contributions, and spent \$813.94 on the show for a net gain of +\$646.06. It is important for all members to understand that these were extremely low costs to produce a show of this magnitude because AIP helped by supplying \$1500 in food expense for the reception, and printed the contact brochure (an approximate \$300 retail cost), and produced other internal graphics like the labels, posters, and window hangings. Due to our day to day communications with AIP we were able to inspire them to keep the in-house helping going on, and get everything done on time. Other venues are not as charitable with their funds. We also had major assistance from new member **Carly Schonberg** to develop the online virtual show with our exhibition team keeping all the gears oiled for her by preparing standardized files and text to use.

We plan to keep promoting the show online to stress our membership quality and ALL members should use it prominently – you can still click to it off our [home page Art for a Hire Purpose](#) icon.

Scholarships

Do you know that one of our specified activities in our by-laws is to support the best of the next generation of illustrators? Once more, PSI issued \$1950 in student awards during 2013, matching

our past few years of giving \$650 each to three partner institutions, now AIP, CCAC, and Bradford School. Thanks to **Rhonda Libbey** for this leadership and **Gina Antognoli** for getting the award payments rolling to recipients each jurying, often on short notice.



PSI is not a Bank

As a 501c3, our goal is not to hoard money, but to spend it on programs benefitting our members and the various levels of audiences mentioned in our by-laws. We are to spend what we take in to serve our membership, and the audiences (the professional, the patrons, and the learning) we serve showing the best illustration work we can market. If we need extra funding for an ambitious project, like the website overhaul or a giant show or promotional directory, it's taken from the participating members as one-time fees, combined with special grant funding requests to the endowment community, or through a one-time assessment, or corporate giving, or an overall soft dues increase to be passed on to the membership, as we just passed by full-member vote this past November.

We Need You!

Let me end this summary by asking each of you – how can YOU help? Pick one or more of these categories and contact a member of our Board to become involved:

- Volunteers are needed for doing ongoing corporate and endowment fundraising.
- PSI needs a program chair and a social chair.
- Lots of assistance will be needed to migrate the existing web content to the new web architecture later this year.
- We want to re-start and grow our mentorship program.

Please keep these needs in mind as 2014 begins.



I write this summary sincerely grateful for all the PSI talent willing to come together and enhance our field in so many ways.

Fred Carlson
PSI New Member Contact, Auditor & Tax Filer

PSI Worked For... Mark Bender



Mark completed two posters for a campaign to celebrate the 40th Anniversary of the **State College Centre Area Transportation Authority (CATA)**. Their campaign highlights the services connection to the local community and to the history of State College, home of Penn State University. Mark was recommended last fall by State College resident **Anni Matsick**, when a request from CATA's Marketing Manager, Jacqueline Sheader, was passed on to her through the Central Pennsylvania Festival of the Arts Director, Rick Bryant. The request was for a strong, colorful retro stylization reminiscent of transportation and travel posters from 1940s through 1970s, so Mark's work easily came to mind. Jacqueline met with Mark in Pittsburgh and plans moved quickly, with results printed in less than three months. Working in a vintage advertising "almost postcard" style, Mark nailed the desired imagery in two 24x36 posters, showing a Penn State landmarks skyline and CATA's changes in bus styles over the years. The posters will be sold at their Downtown Pass Sales Office and Main Office starting in February. They will also be available for sale online in the coming months. Potential use of the images is planned for the development of other marketing support items and publications, as well.

Nora Thompson



Nora's style was an ideal match as cover art for the Fall 2013 issue of Carnegie Mellon University's Computer Science alumni magazine, *The Link*. "The story is about how computer science

majors have to learn to make things, like prototypes, with their hands, not just code on a computer," Nora adds. The editor found [her gallery](#) on the PSI website.

The illustration appears online with the [article](#).

Spotlight on... John Ritter

John's ten-week project entailed six rounds of sketches, 63 silk screens, 70+ films from digital files, 32 custom ink mixes, old school carpentry and 21 pastrami and coleslaw sandwiches from Northside Deli.

John just completed a project for Mylan pharmaceuticals. He was hired by their Creative Director, Cheryl Bender (Mark Bender's spouse), to create art work for their new world headquarters in Pittsburgh. The work features the company's six CEOs and a visual timeline. Sketches were created digitally. Final art is silkscreen and hand painting on wood panels.

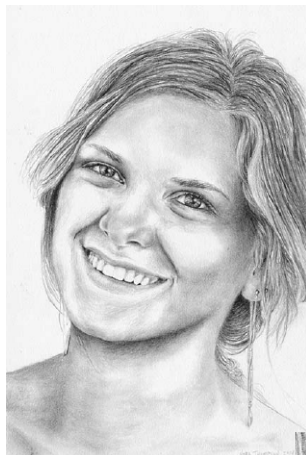
John would like to acknowledge Artist Image Resource for all of the help in making this project a reality.



More photos of this project and John's portfolio can be viewed at www.ritterillustration.net



1

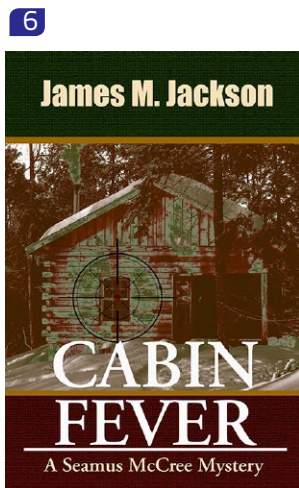


3

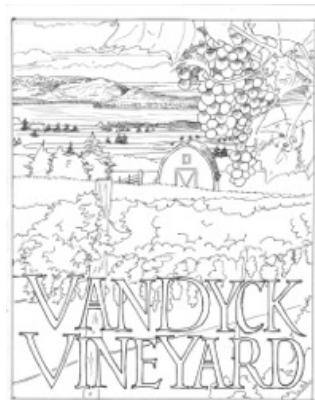
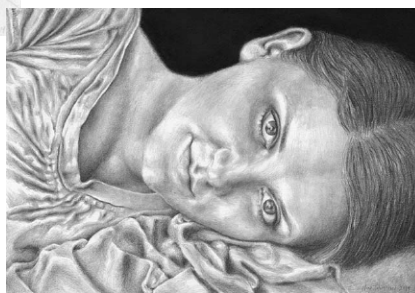


5

9



4



7



8



10

1. This oil painting by **Susan Castriota** was done for US Congressman Tim Murphy's Christmas card.
2. Here's the holiday card done by **David Biber** for the Carnegie Mellon University School of Computer Science. "I was asked to illustrate a Scotty dog (school mascot) who was anxiously awaiting the output of a 3D printer," Dave says. "Initially we had Christmas trees, but we changed them to snowmen."
3. **Tim Zahniser's** latest icon portrait will be offered in a second version that he hopes will appeal more to racing fans.

4. **Nora Thompson** did these portrait drawings of her daughters, Tricia and Toni, for their 30th birthday.
5. "Ava" is the latest commissioned portrait done by new affiliate member **Danielle Amiano**. It's graphite on Bristol board, 14x17. "This year I look forward to developing my style with a more creative edge," she says.
6. This cover designed by **Craig Jennion** is for a book soon to be released.
7. **Fred Carlson** has a new commission from a winery out west. The b/w wine label sketch was presented to

- Flathead Lake Winery last week and he is currently waiting for approval. The wine label is for the Van Dyck Vineyards Marquette varietal grape grown near Flathead Lake, Montana, on the western edge of Glacier Park. The label depicts the trestles and foreground close up of Marquette varietal, the historic barn on the vineyard property, the looping Flathead River and Lake in the background, and the scenic mountains beyond. The proposed hand lettering will be worked into the art.
8. This illustration of Marie Curie was done by **John Hinderliter** for a chil-

dren's magazine.

9. Here's one of the 80 illustrations John did for a book about the Statue of Liberty for Penguin Books.
10. **Patty Lipinski** had a private commission to hand paint a design using images from the client's fabric swatch collection onto an unfinished wooden bench/stepstool, intended as a gift for her great-grandson. The design was painted in acrylics and shows zoo animals in a countryside setting of vibrant colors.



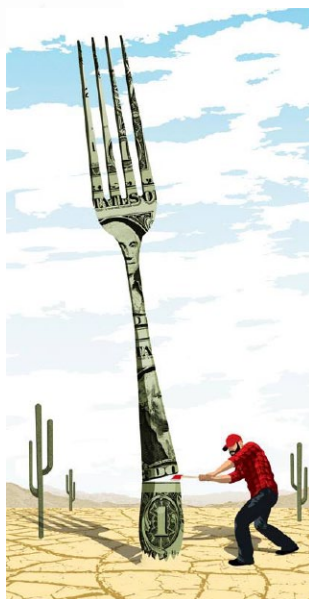
11



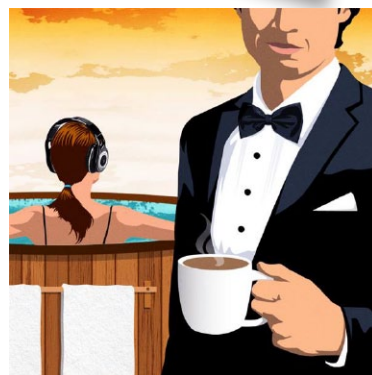
12



13



14



15



16



17



18

11. **Bernadette Kazmarski** put it together a "Feline Style Sampler" as a portfolio piece to include in presentations to prospective customers to show her variety of styles and ability to design similar books. The sampler itself became popular purchase.

12. Bernadette's *12 Sketches of Cats Limited Edition Fine Art Wall Calendar* is 11x17 and printed on only one side to showcase the artwork, in archival digital inks on acid-free natural cover stock, spiral bound at the top. It includes 12 popular daily sketches

plus one on the cover and one on the title page, each suitable for framing. \$10.00 of the sale of each calendar is donated to a different feline rescue group each month. Bernadette hopes to design these annually.

13. **Kit Paulsen's** latest illustration for the spring Table magazine is an oil, "Just to challenge myself," she says. It goes with a story about keeping bees in the apple orchard.

14. More in from **Taylor Gallery** for Phoenix Magazine's Hot Topics. This art was done for an article on SNAP

(Supplemental Nutrition Assistance Program) cuts in Arizona.

15. And here's another of Taylor's pieces done for The Wall Street Journal January Best Buys that include men's formal wear, coffee, towels, headphones, and hot tubs. AD Mark Tyner continues to use his work.

16. This 16x16 "borough fields" Throw Pillow Cover with **Dave D'Incau Jr's** double-sided design is available for purchase, along with tote bags and art prints, at society6.com.

17. **Dave Klug's** illustration is for the February issue of Whirl magazine, their new car issue. "I don't like drawing cars, so making it as simple as possible was the way to go for me," Dave says. "Limiting myself to three colors also helps with the look I was after. I'm a sucker for negative space too."

18. **Yelena Lamm** keeps working on floral still lifes. "Russian Tea," 24x24 oil on canvas, is her latest piece in this series.